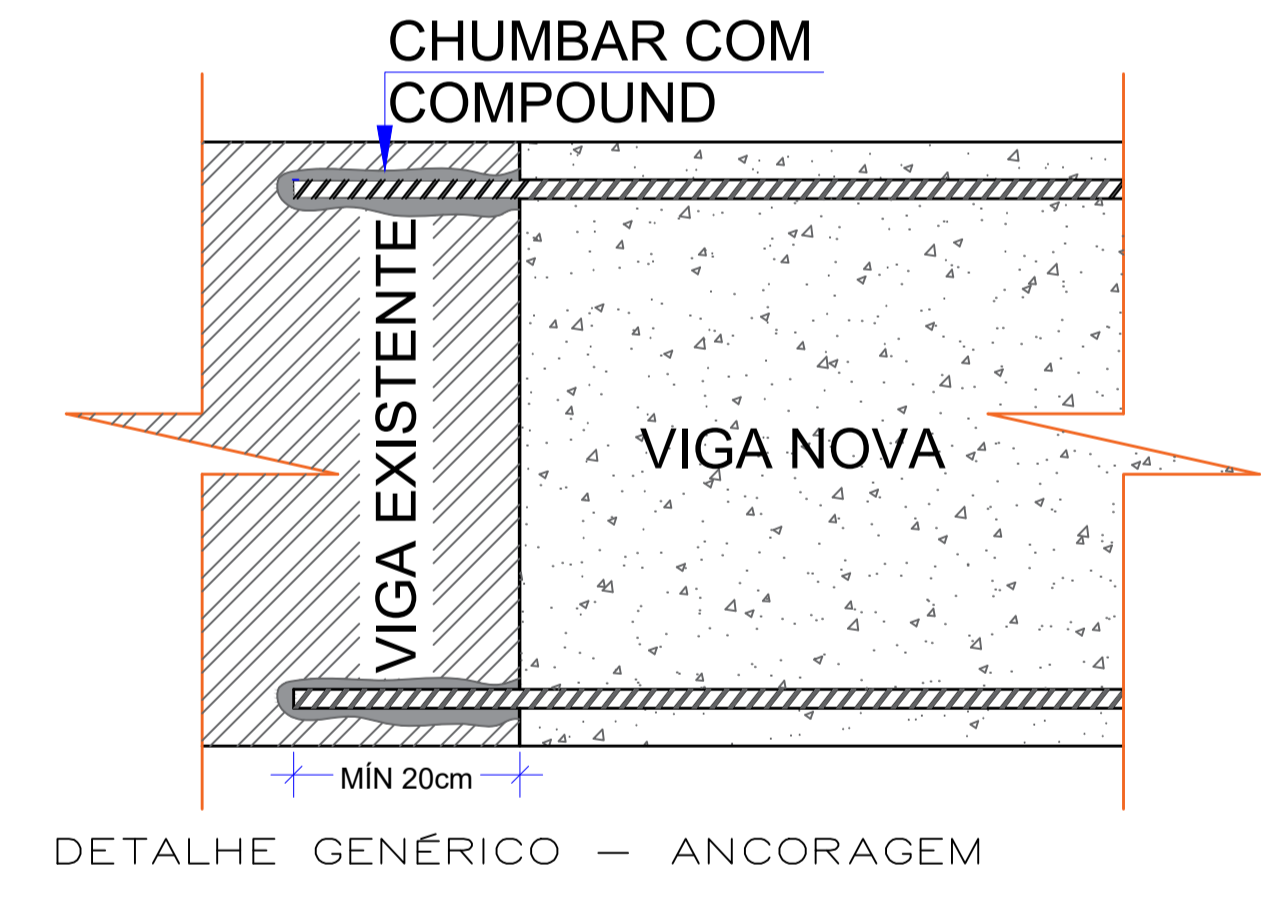
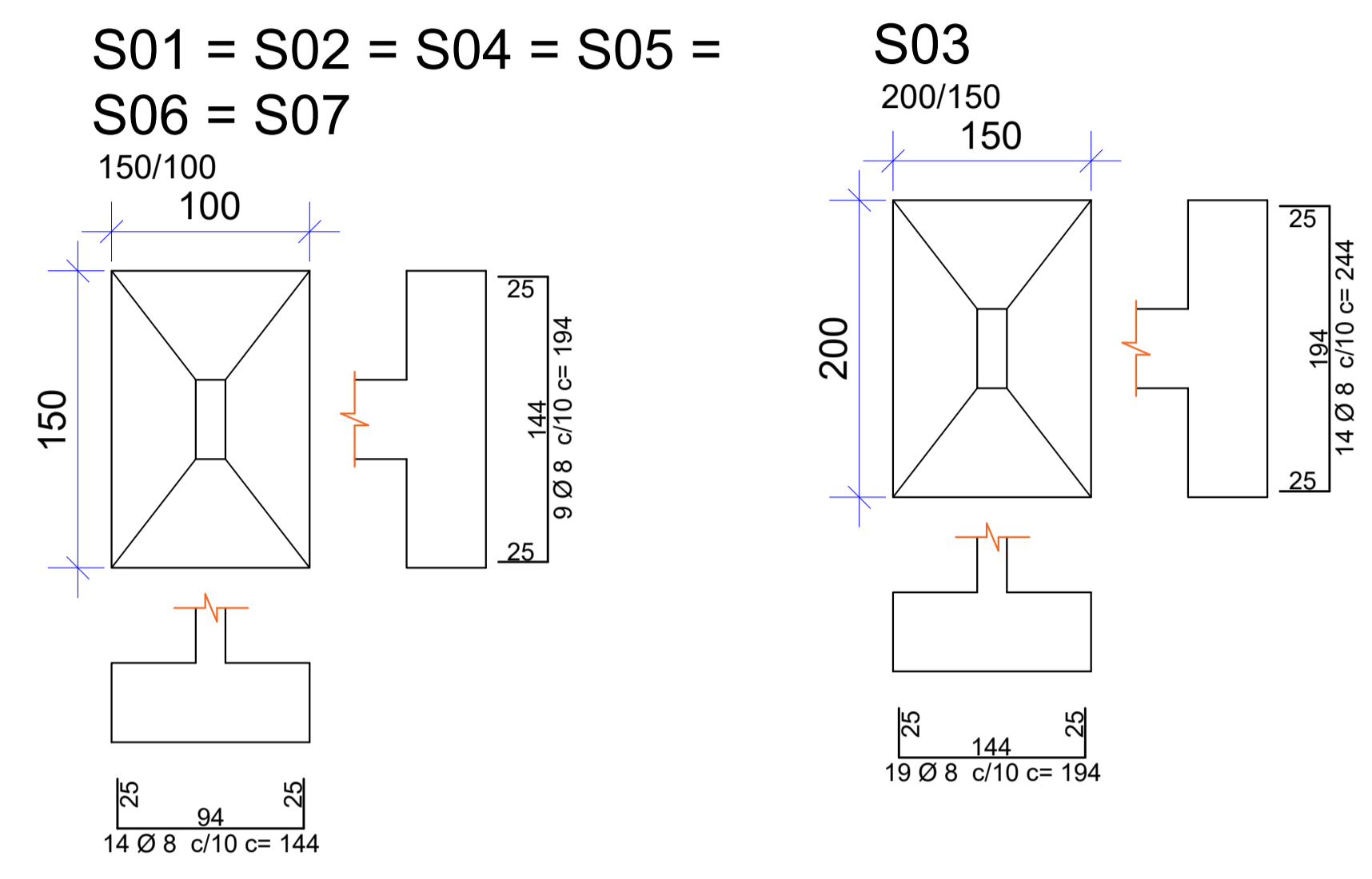
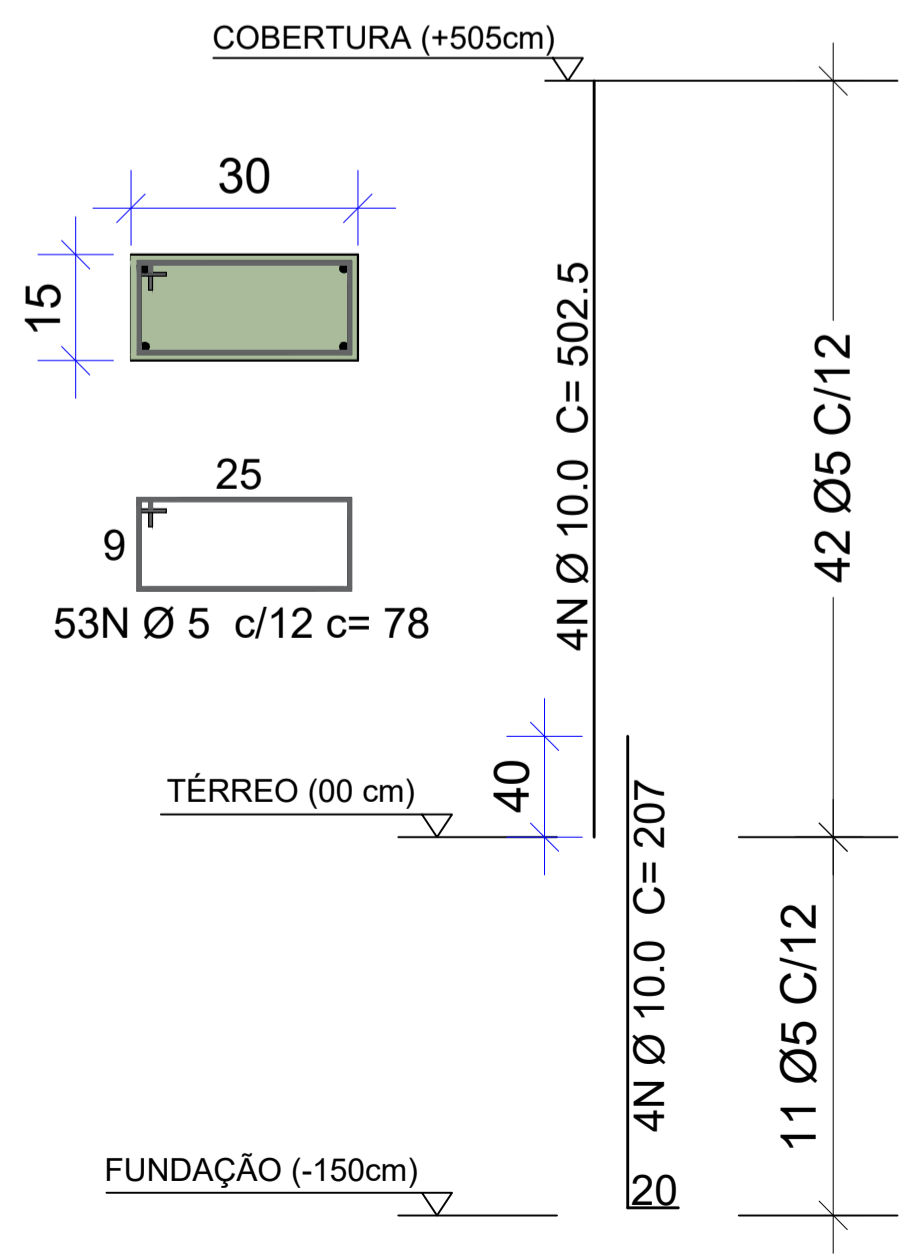


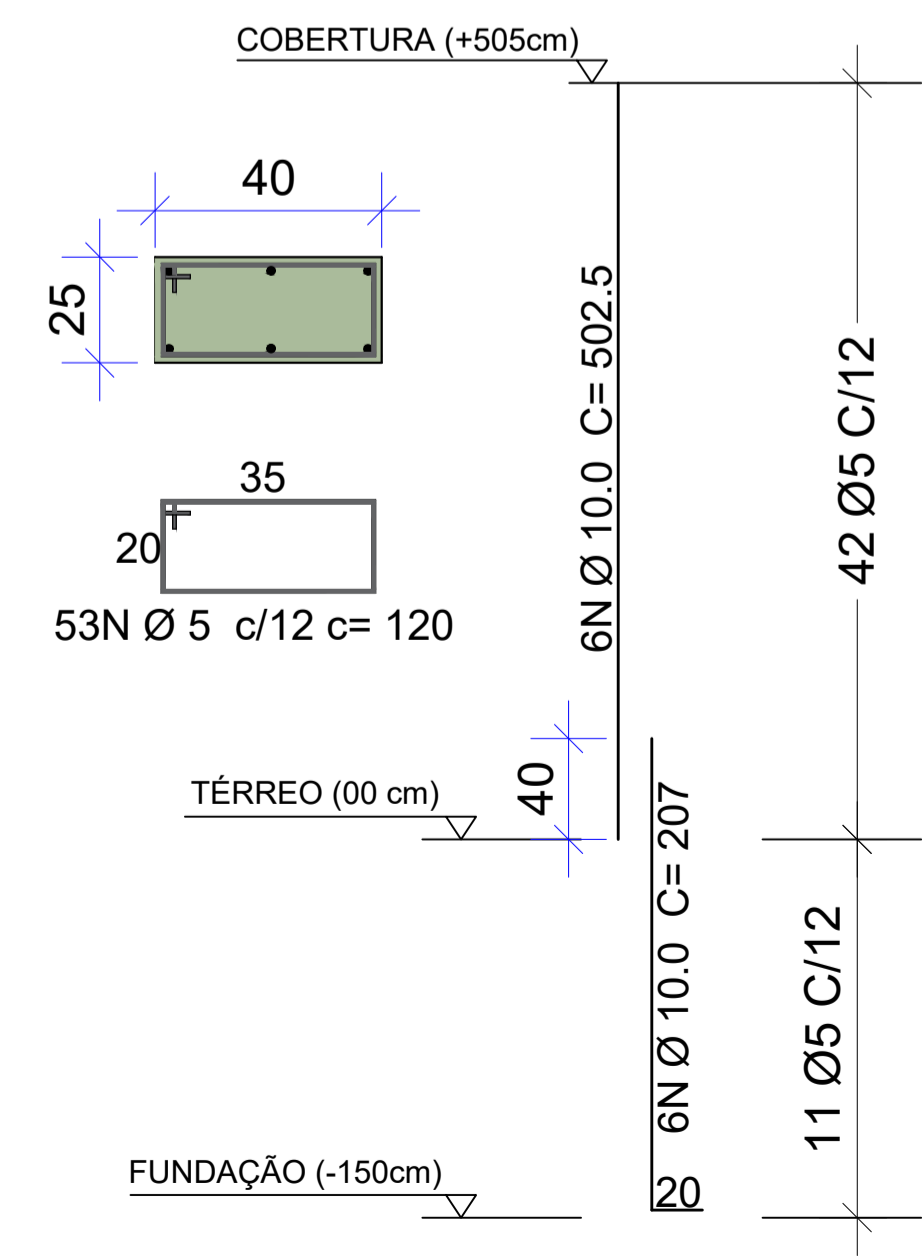
QUANTITATIVO				
ELEMENTO ESTRUTURAL	CARACTERÍSTICA	CONCRETO	AÇO CA50/60	FORMA
SAPATAS	150X100X30	2,7m <sup>3</sup>	Ø 8,0 - 89,27 kg	9,0 m <sup>2</sup>
SAPATA GRANDE	200X150X30	0,9m <sup>3</sup>	Ø 8,0 - 28,05 kg	2,1 m <sup>2</sup>
PILARES	7 unidades	2,5m <sup>3</sup>	Ø 10,0 - 148,73 kg	29,92 m <sup>2</sup>
VIGAS	14 unidades	6,74m <sup>3</sup>	Ø 10,0 - 277,26 kg	96,24 m <sup>2</sup>
ESTRIBOS PILARES, BROCAS E VIGAS	Ø 5,00 mm	-	Ø 5,0 - 113,76 kg	-
BROCAS	9 unidades	0,49m <sup>3</sup>	Ø 8,0 - 56,64 kg	-
LAJES TRELIÇADA (e=5cm)		26,84m <sup>2</sup>	1,34m <sup>3</sup>	-



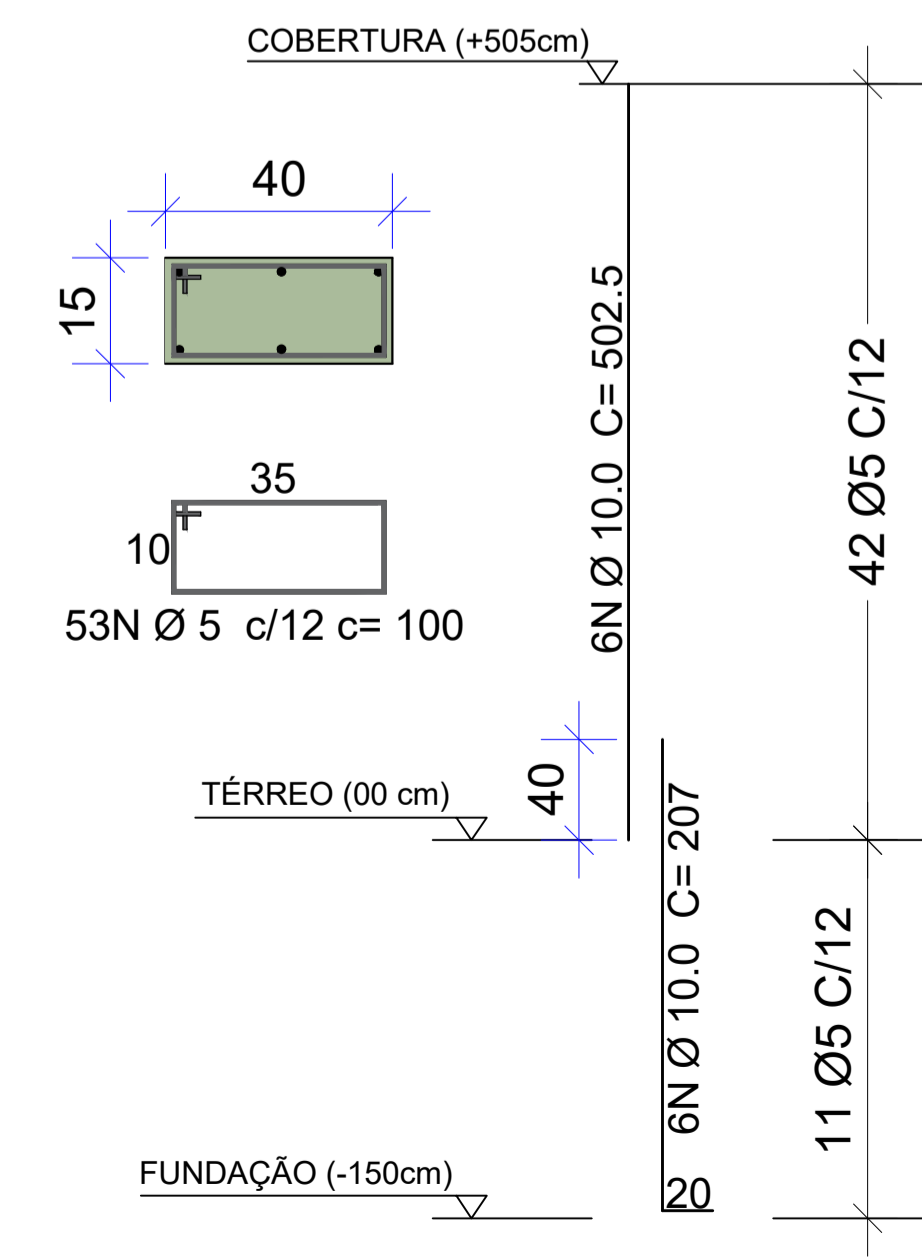
P01 = P02 = P04 = P05  
15/30



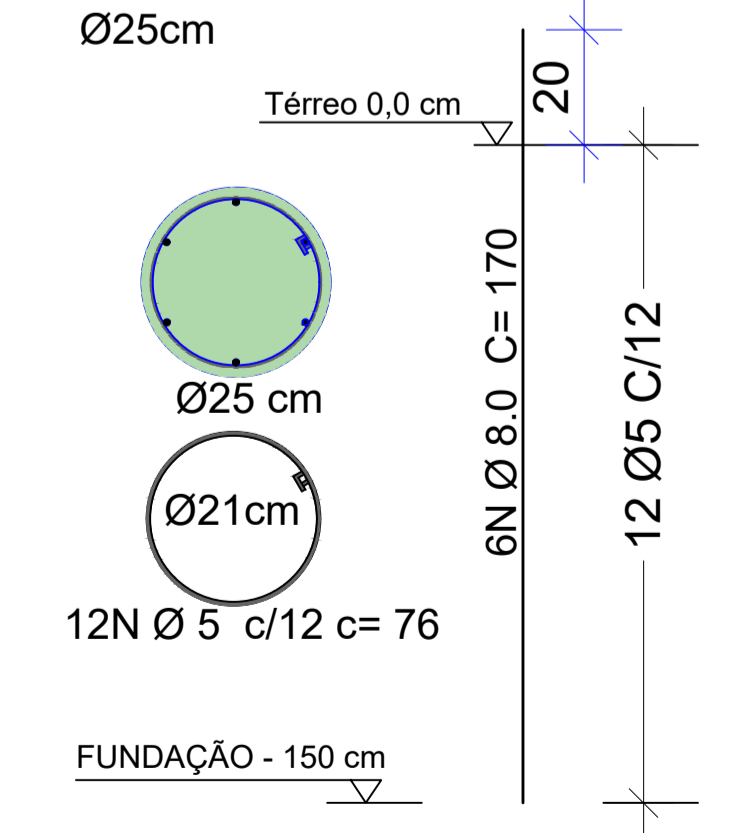
P03  
15/30



P06 = P07  
15/30



BROCAS (9x)  
Ø25cm



**PREFEITURA MUNICIPAL DE CAMPOS NOVOS (SC)**  
RUA EXPEDICIONÁRIO, 323 - CENTRO - FONE (49) 3541-8200  
www.camposnovos.sc.gov.br

SECRETARIA MUNICIPAL DE TRANSPORTES, OBRAS E URBANISMO  
DEPARTAMENTO DE ENGENHARIA

OBRA: ESTRUTURAL REFORMA UBS - SÃO SEBASTIÃO

PROJETO: ESTRUTURAL ASSUNTO: DETALHES ESTRUTURAIS GÊNÉRICOS E QUANTITATIVOS

DATA: NOVEMBRO/2022 LOCAL: BAIRRO SÃO SEBASTIÃO (RODOVIÁRIA)

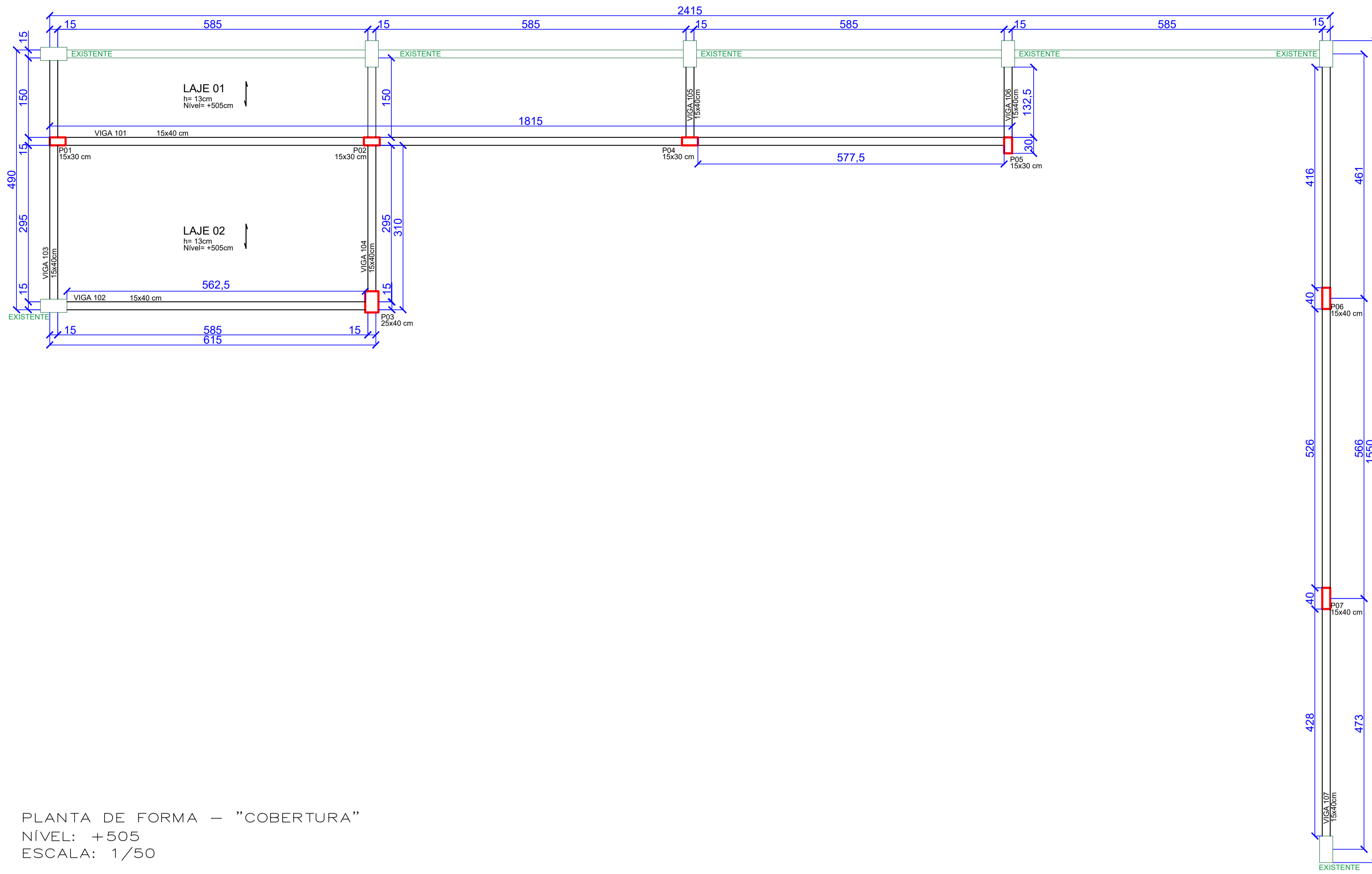
CODIGO CAD: 2022/SEC. SAÚDE/UBS SÃO SEB... RESP. TÉCNICO: EDMILSON JOSE RODRIGUES RESPONSAVEL LEGAL: GILMAR MARCO PEREIRA

ÁREA CONSTRUIDA: 368,27 m<sup>2</sup>

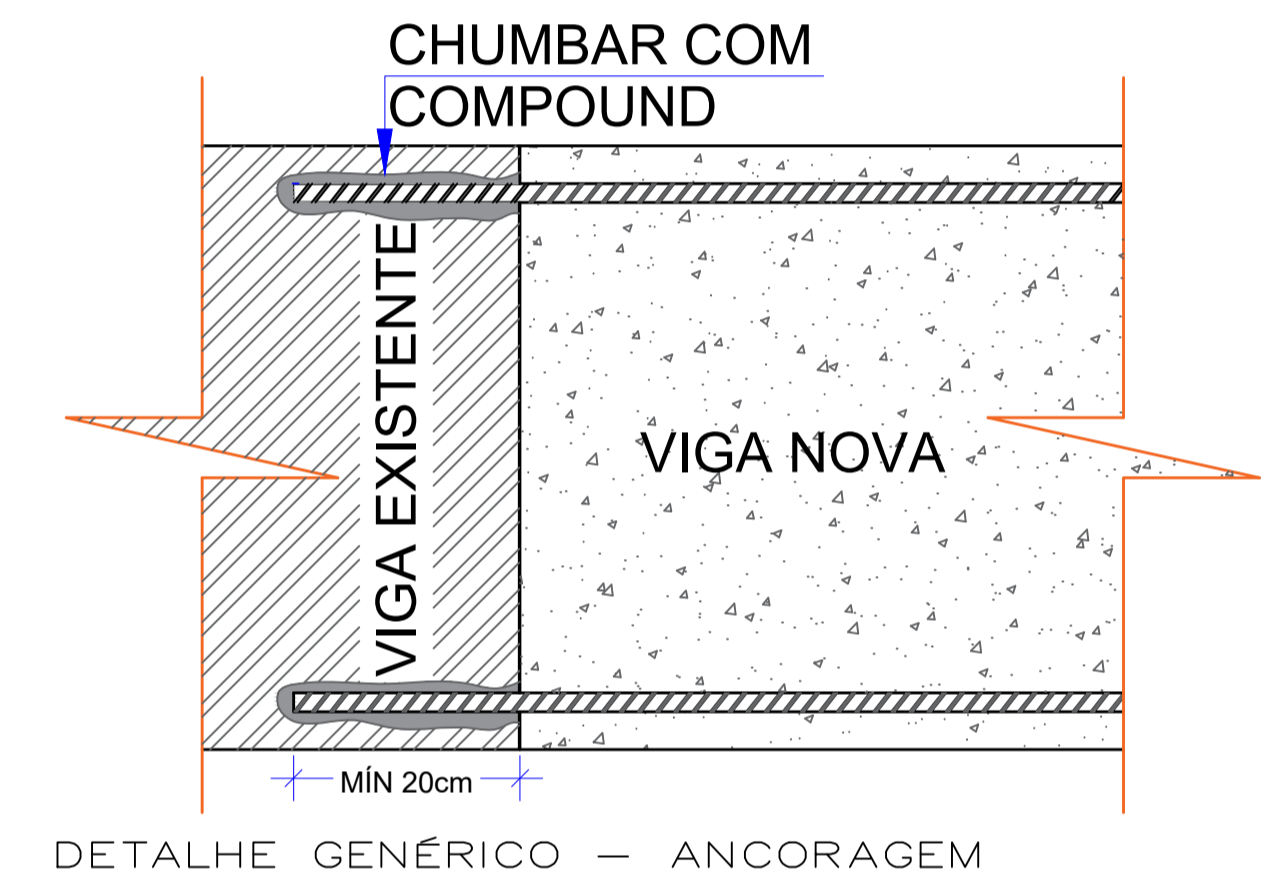
ESCALA: SEM ESCALA FOLHA: 01/02

DESENHO: EDMILSON J. R. ENGENHEIRO CIVIL

CÓPIAS PI  
( ) ORÇAMENTO ( ) CONHECIMENTO  
( ) APROVAÇÃO ( ) EXECUÇÃO

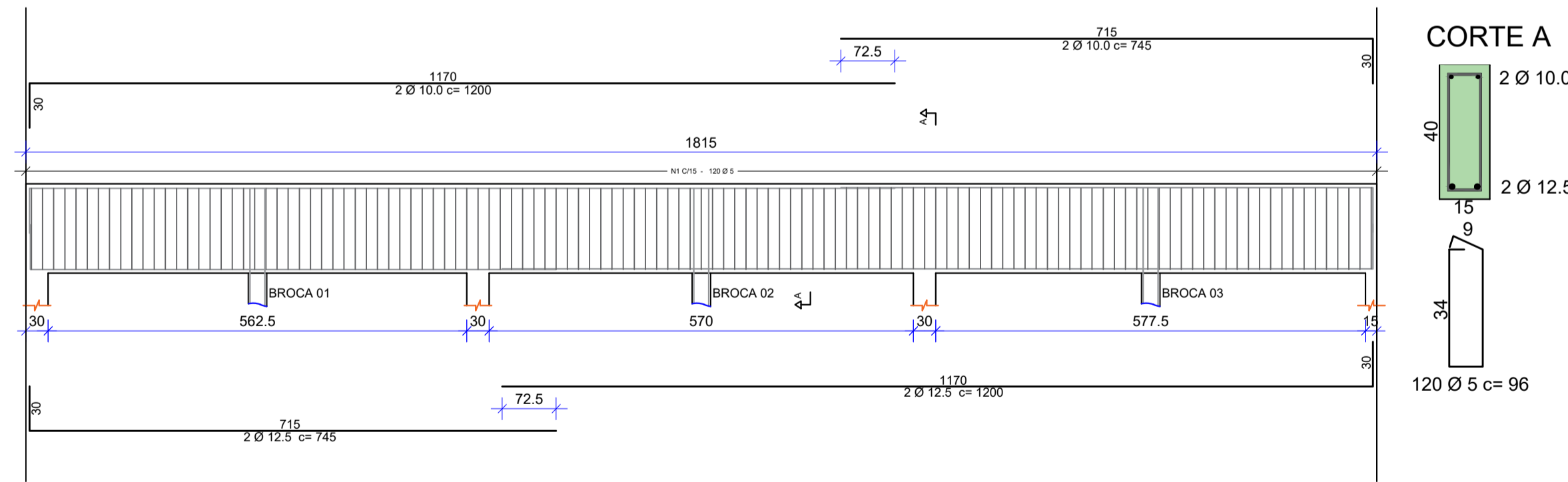


QUANTITATIVO				
ELEMENTO ESTRUTURAL	CARACTERISTICA	CONCRETO	AÇO CA50/60	FORMA
SAPATAS	150X100X30	2,7m <sup>3</sup>	Ø 8,0 - 89,27 kg	9,0 m <sup>2</sup>
SAPATA GRANDE	200X150X30	0,9m <sup>3</sup>	Ø 8,0 - 28,05 kg	2,1 m <sup>2</sup>
PILARES	7 unidades	2,5m <sup>3</sup>	Ø 10,0 - 148,73 kg	29,92 m <sup>2</sup>
VIGAS	14 unidades	6,74m <sup>3</sup>	Ø 10,0 - 277,26 kg	96,24 m <sup>2</sup>
ESTRIBOS PILARES, BROCAS E VIGAS	Ø 5,00 mm	-	Ø 5,0 - 113,76 kg	-
BROCAS	9 unidades	0,49m <sup>3</sup>	Ø 8,0 - 56,64 kg	-
LAJES TRELIÇADA (e=5cm)	26,84m <sup>2</sup>	1,34m <sup>3</sup>	-	-

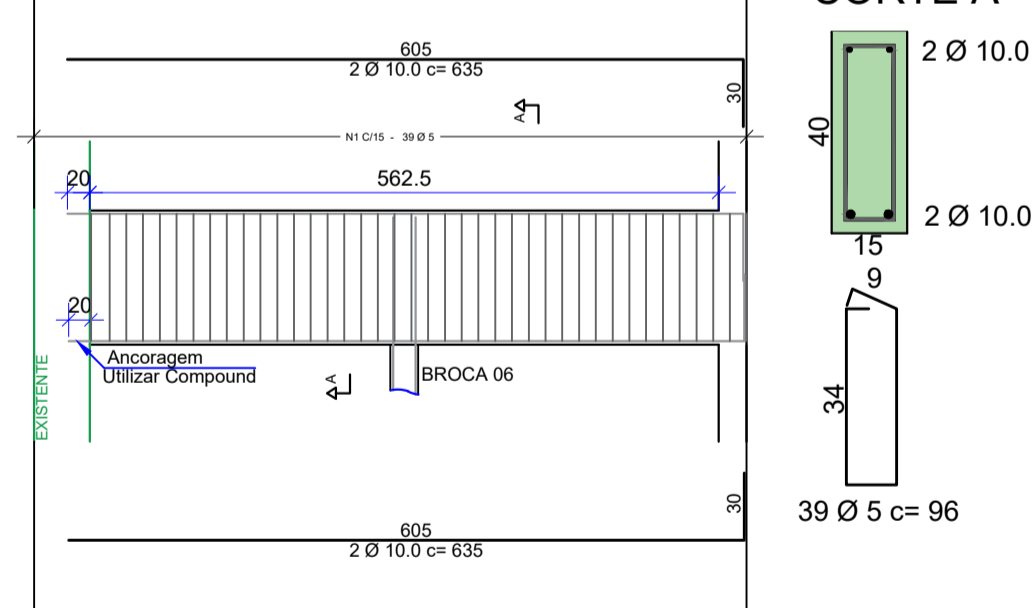


PLANTA DE FORMA – "COBERTURA"  
NÍVEL: +505  
ESCALA: 1/50

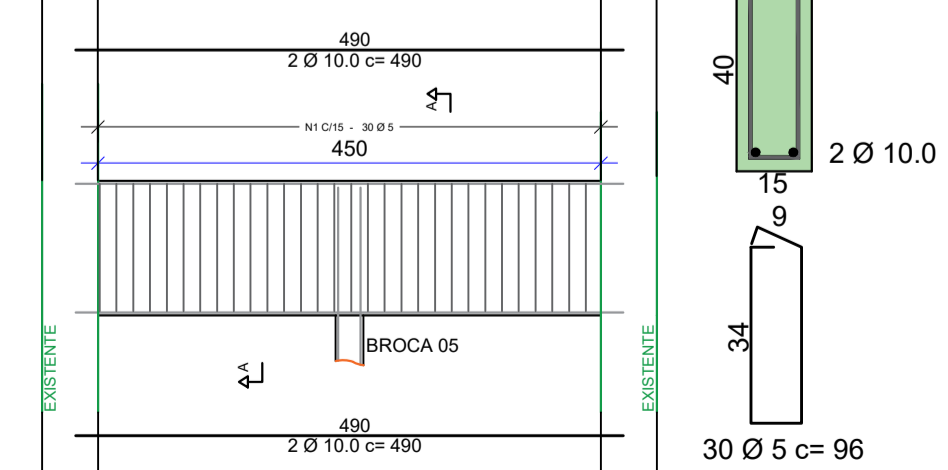
V101 (2x)  
15/40



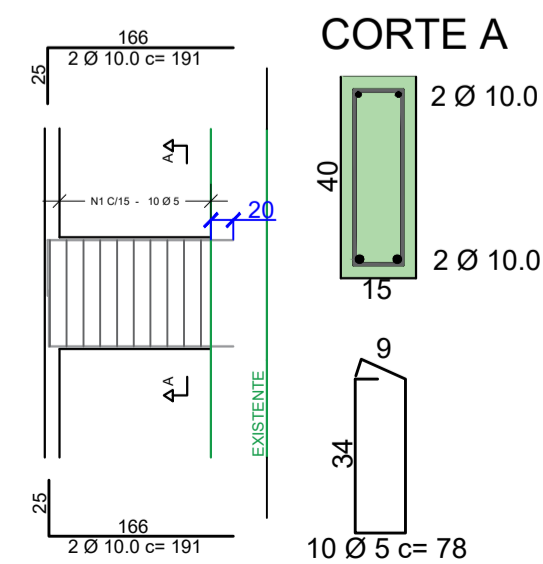
V102 (2x)  
15/40



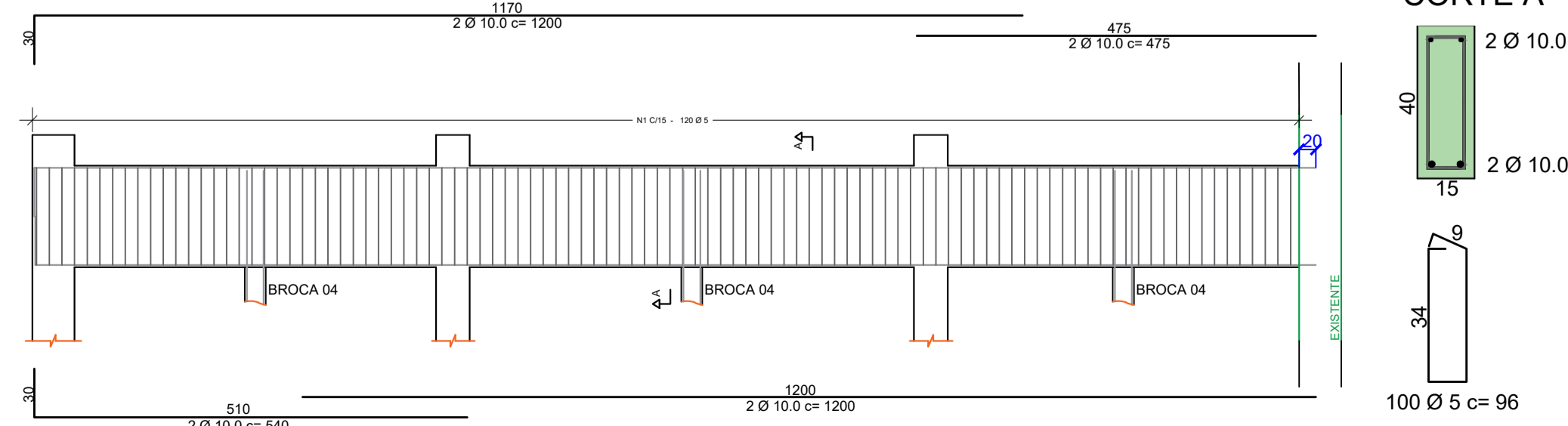
V103 e V104 (2x)  
15/40



V105 e V106 (2x)  
15/40



V107 (2x)  
15/40



**PREFEITURA MUNICIPAL DE CAMPOS NOVOS (SC)**  
RUA EXPEDICIONÁRIO, 323 – CENTRO – FONE (49) 3541-8200  
www.camposnovos.sc.gov.br

SECRETARIA MUNICIPAL DE TRANSPORTES, OBRAS E URBANISMO  
DEPARTAMENTO DE ENGENHARIA

OBRA: ESTRUTURAL REFORMA UBS – SÃO SEBASTIÃO

PROJETO: ESTRUTURAL ASSUNTO: DETALHES ESTRUTURAIS GENÉRICOS E QUANTITATIVOS

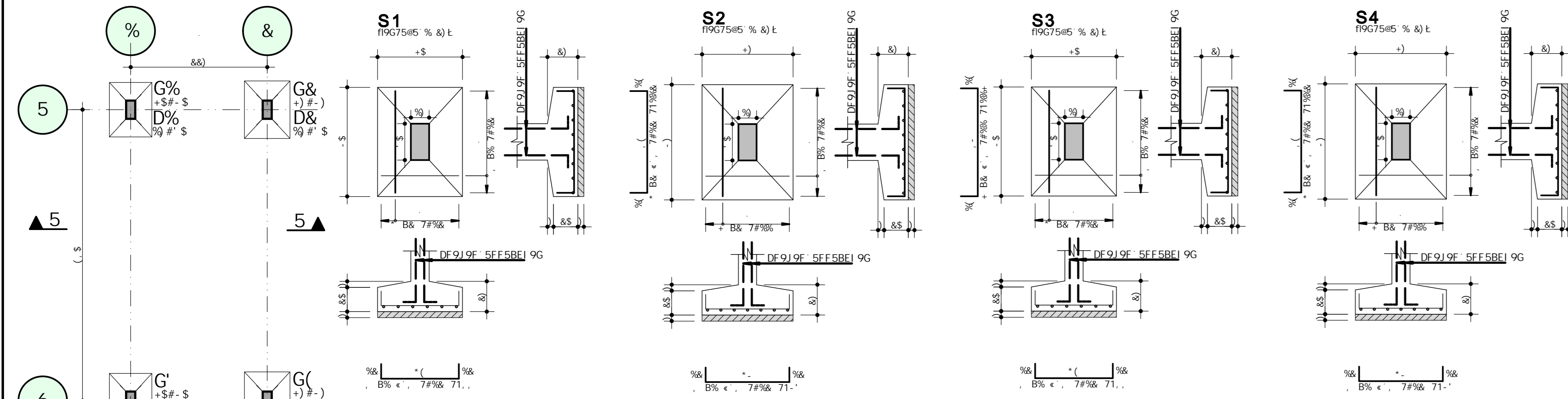
DATA: NOVEMBRO/2022 LOCAL: BAIRRO SÃO SEBASTIÃO (RODOVIÁRIA)

CODIGO CAD: 2022/SEC. SAÚDE/UBS SÃO SEB... RESP. TECNICO: RESPONSAVEL LEGAL:

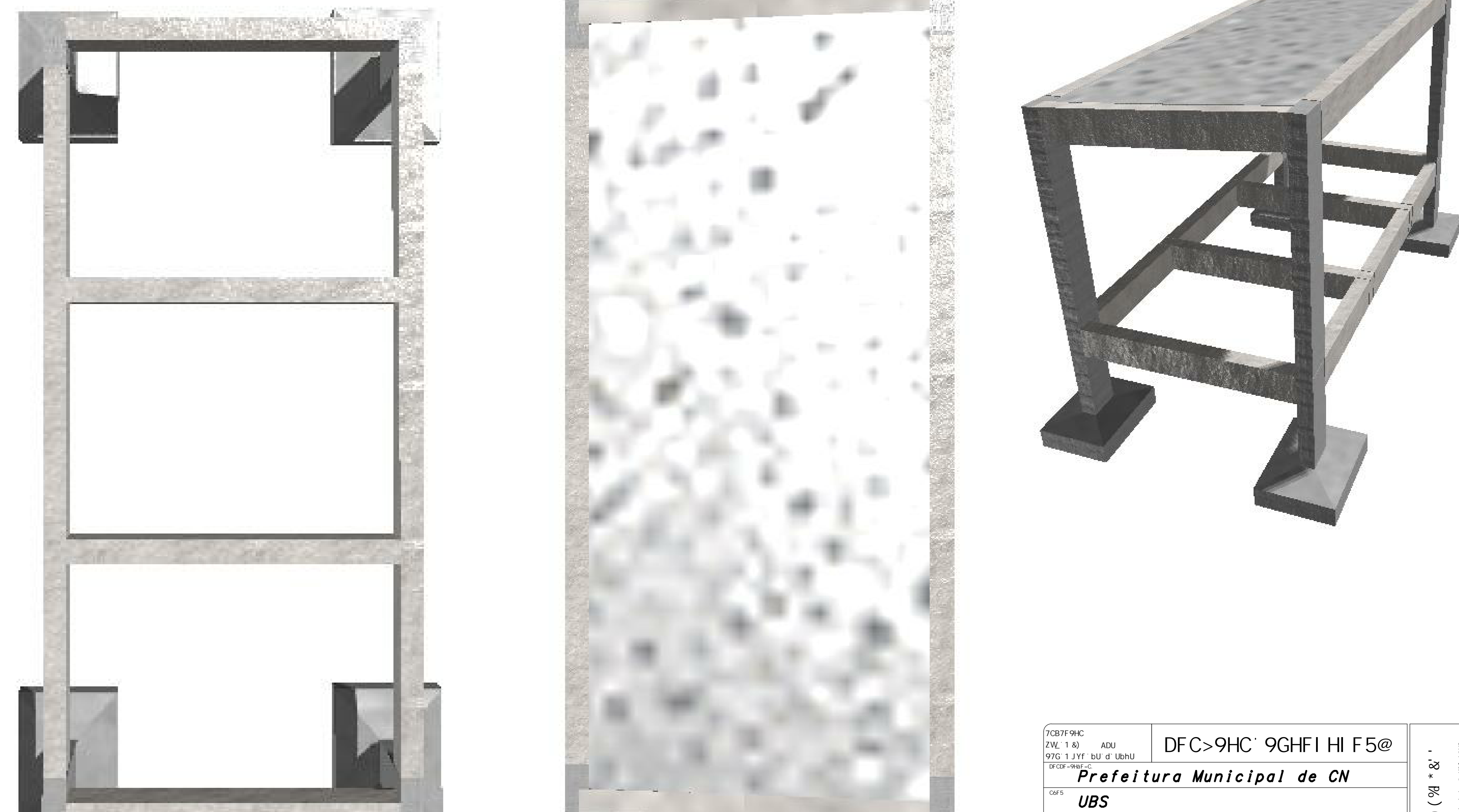
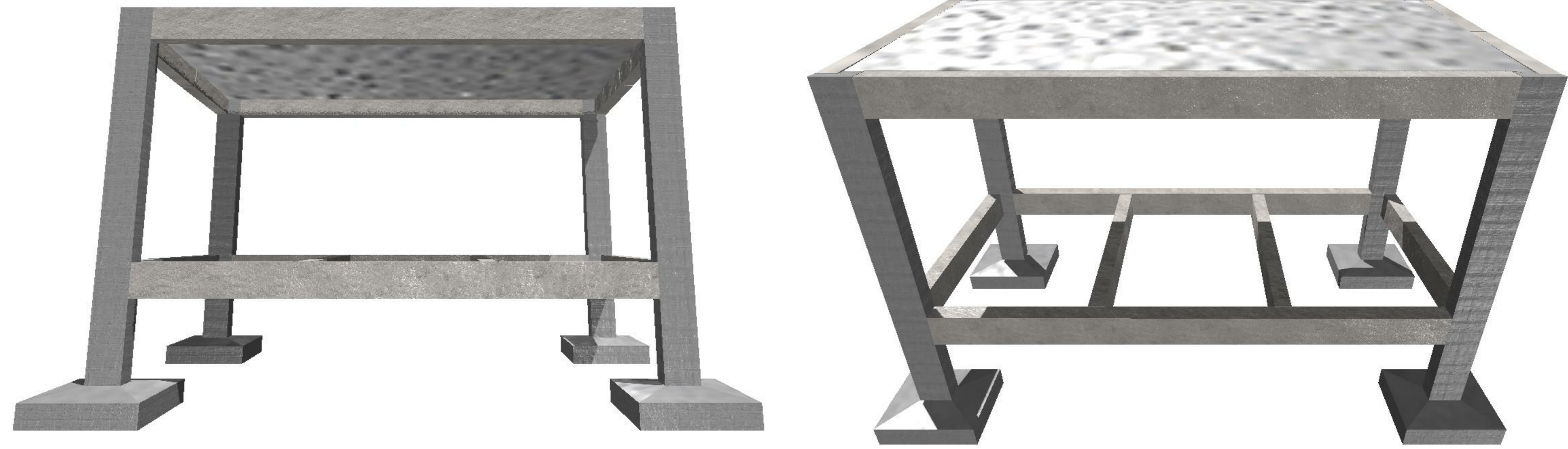
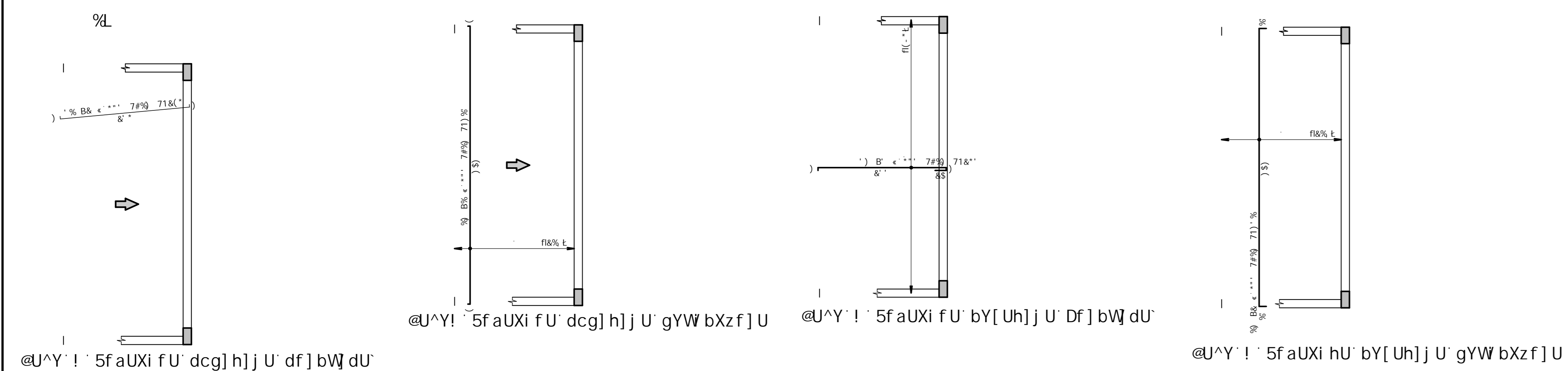
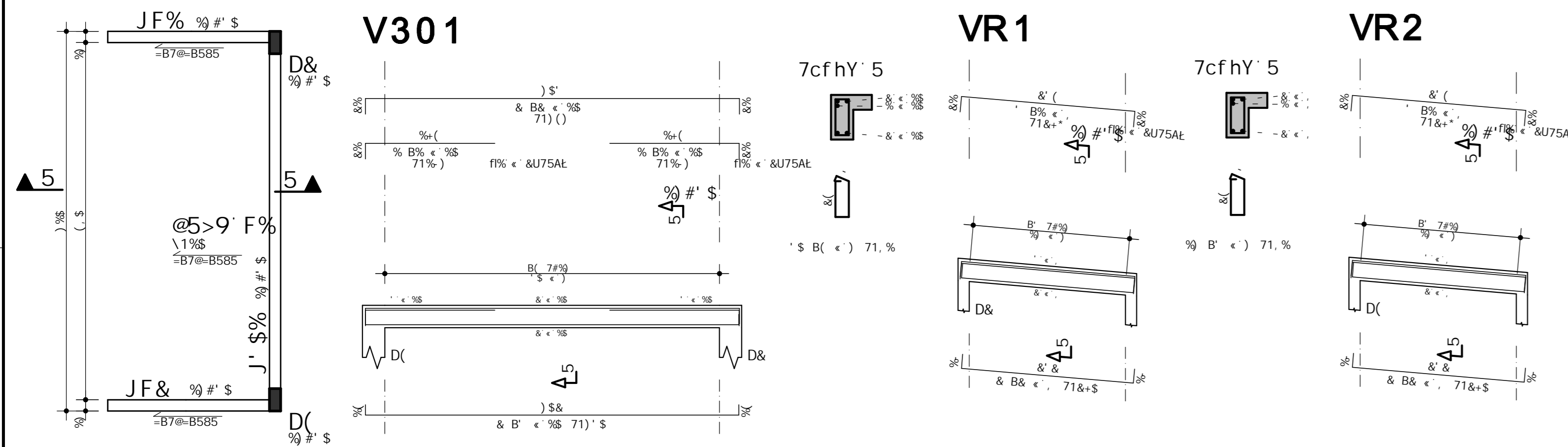
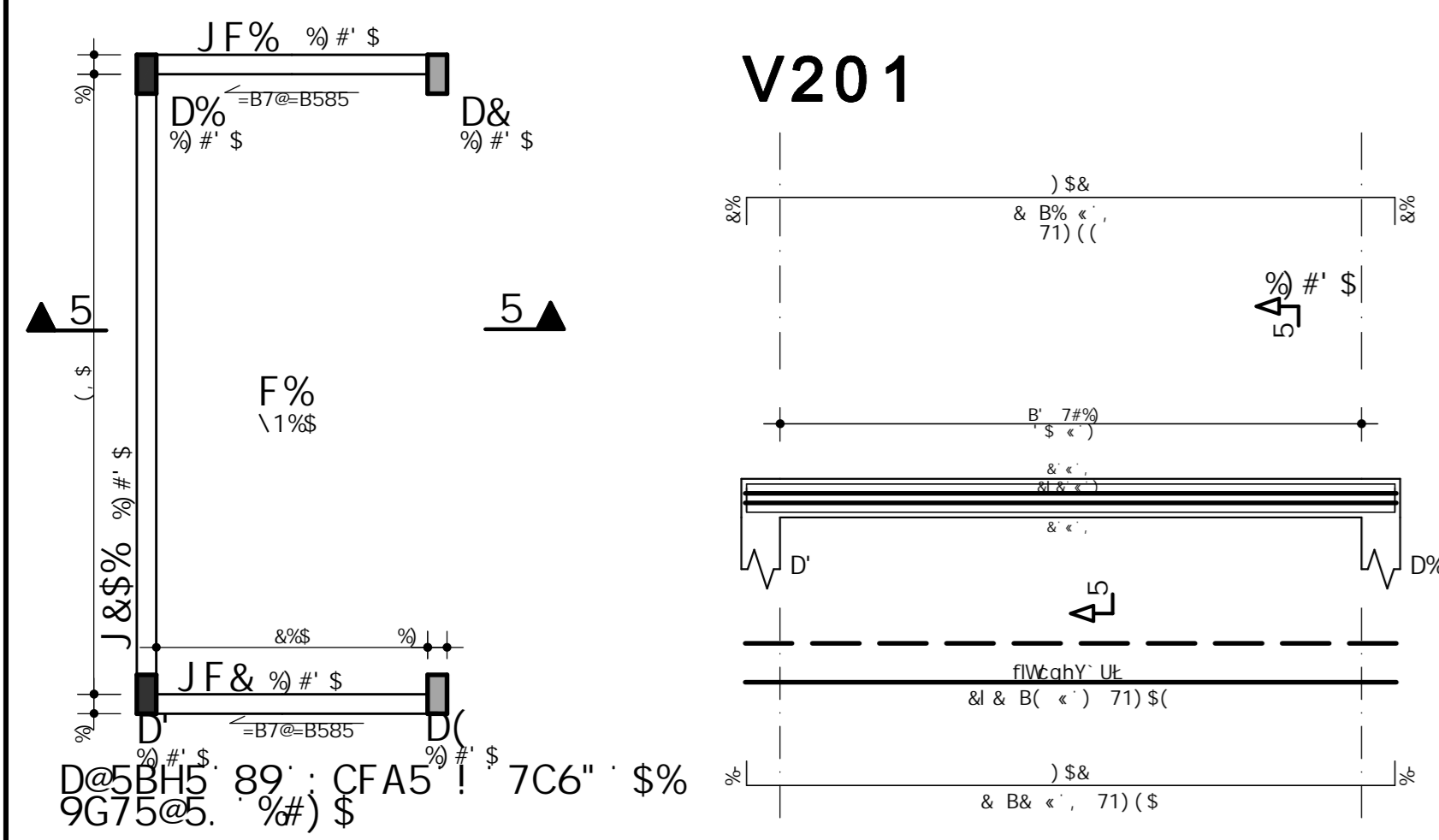
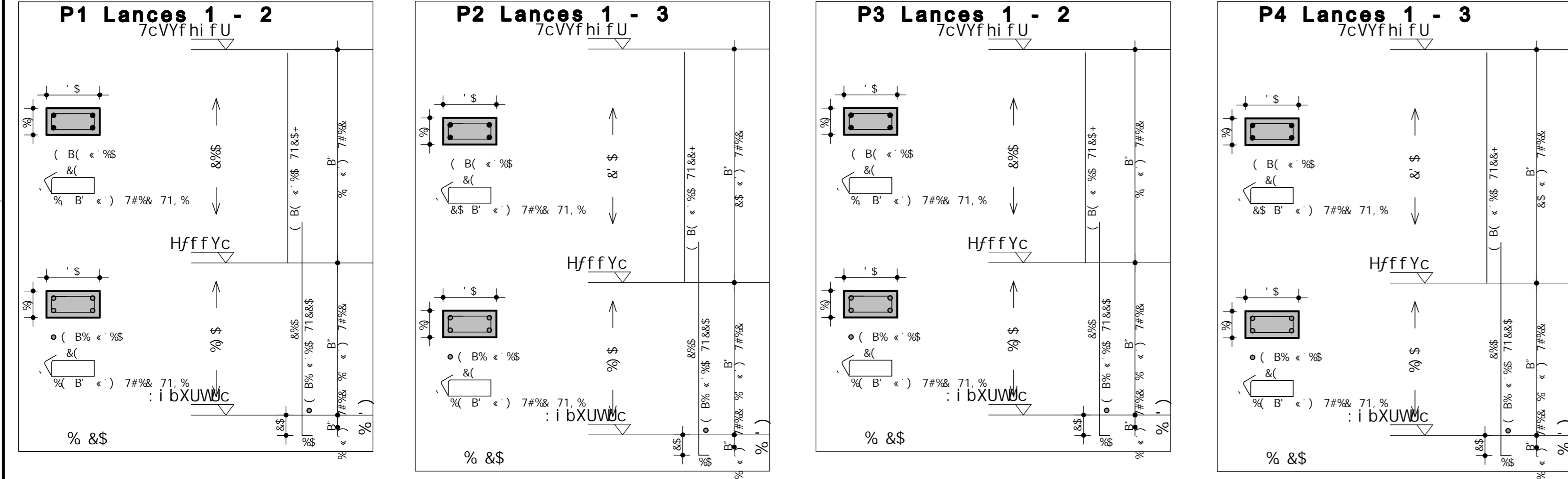
ÁREA CONSTRUIDA: 368,27 m<sup>2</sup> ESCALA: SEM ESCALA FOLHA: 02/02

DESENHO: EDMILSON J. R. EDMILSON JOSE RODRIGUES CREA/SC 163.312-1 ENGENHEIRO CIVIL GILMAR MARCO PEREIRA PREFEITO MUNICIPAL

CÓPIAS PI  
( ) FORÇAMENTO ( ) CONHECIMENTO  
( ) APROVAÇÃO ( ) EXECUÇÃO



D@5BH5 89' @C75uEC  
9G75@5. % #) \$



SUC	DOG	6-H	EI SBH	7CADF	A9BHC
0%	...	...	...	...	...
G&	...	...	...	...	...
G	...	...	...	...	...
G'	...	...	...	...	...
D%	...	...	...	...	...
D&	...	...	...	...	...
D'	...	...	...	...	...
Dx	...	...	...	...	...
J98%	...	...	...	...	...
J98&	...	...	...	...	...
J98'	...	...	...	...	...
J98(	...	...	...	...	...
J98)	...	...	...	...	...
J98]	...	...	...	...	...
J98%	...	...	...	...	...
J98&	...	...	...	...	...
J98'	...	...	...	...	...
J98(	...	...	...	...	...
J98)	...	...	...	...	...
J98]	...	...	...	...	...
J98%	...	...	...	...	...
J98&	...	...	...	...	...
J98'	...	...	...	...	...
J98(	...	...	...	...	...
J98)	...	...	...	...	...
J98]	...	...	...	...	...

SUC	F9GI AC B9	SUC	D9CC
...	...	...	...
...	...	...	...
...	...	...	...
...	...	...	...
...	...	...	...
...	...	...	...
...	...	...	...
...	...	...	...
...	...	...	...
...	...	...	...

PROJETO: 9G75@5. % #) \$  
 CLIENTE: Prefeitura Municipal de CN  
 ENDERÇO: UBS  
 LOCAL: Df c^Yhc' 9ghf i hi f u' 7cad' Yhc' ! @ I Y] f ug  
 DATA: 98A=@GCB >CG9' FC8F=; I 9G