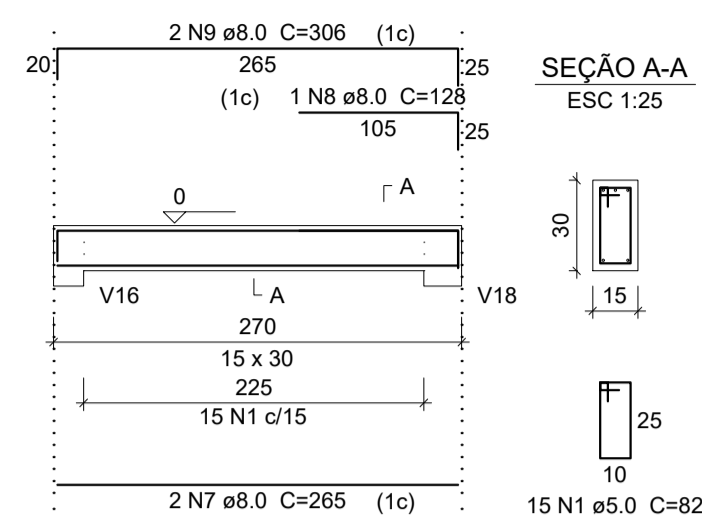
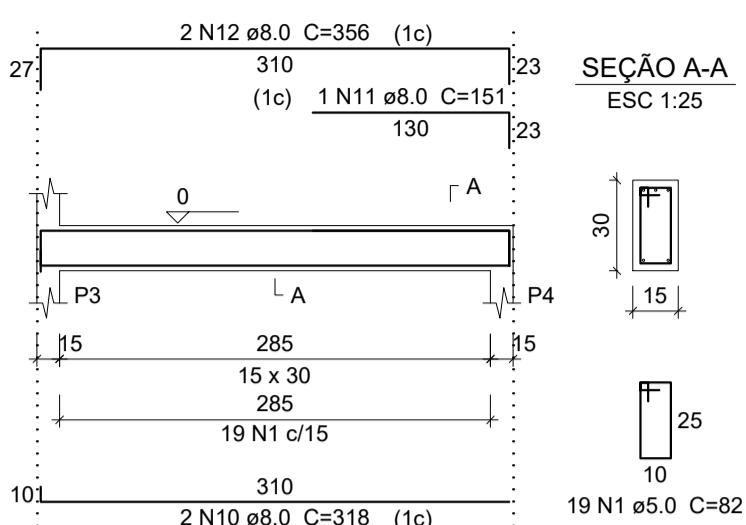


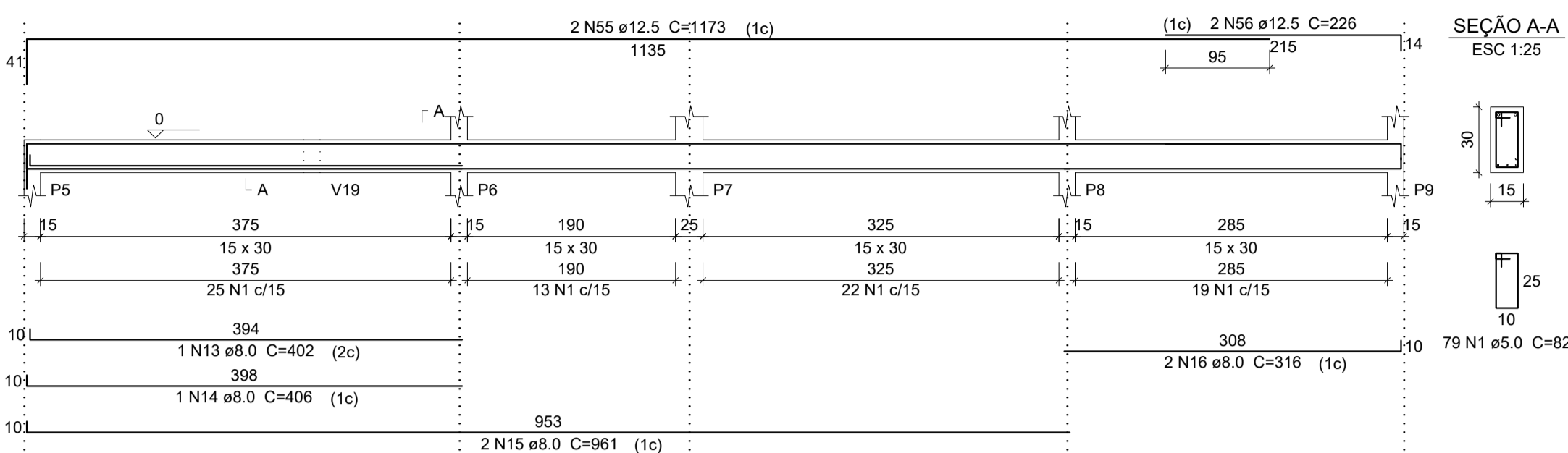
V1
ESC 1:50



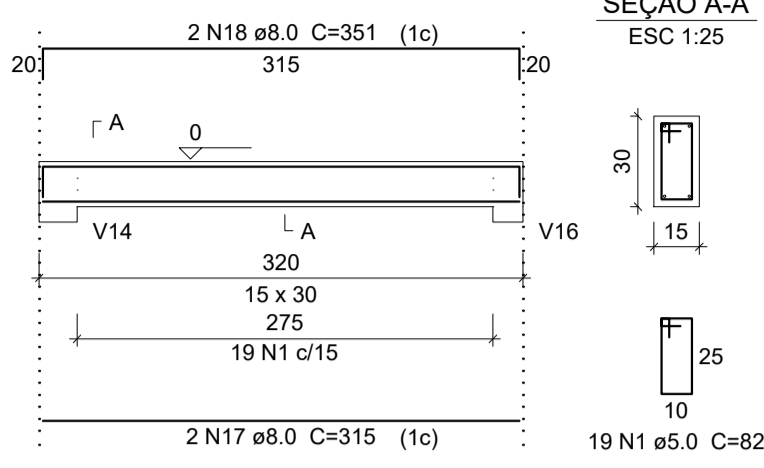
V2
ESC 1:50



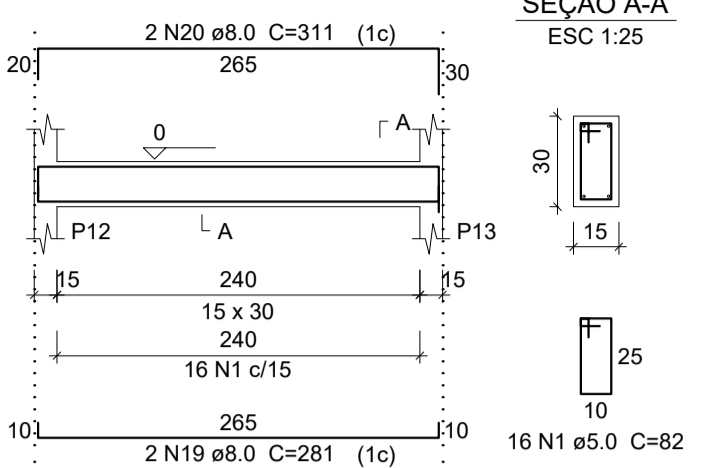
V3
ESC 1:50



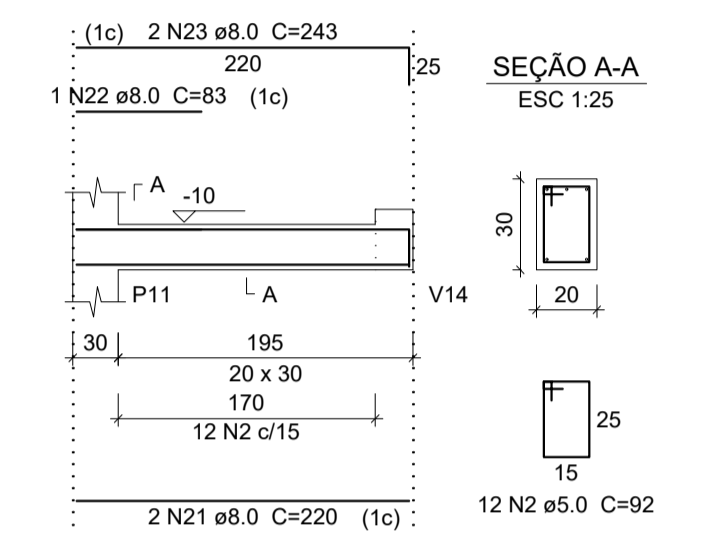
V4
ESC 1:50



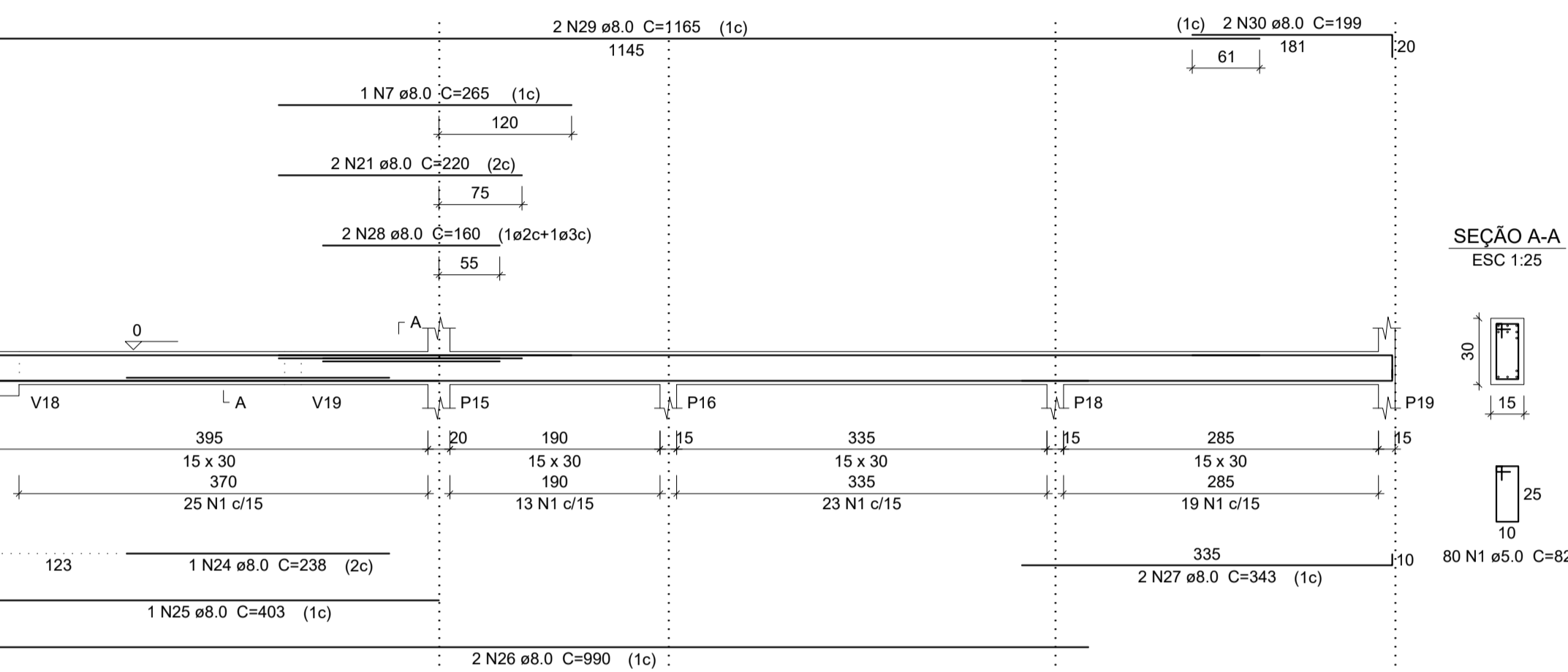
V5
ESC 1:50



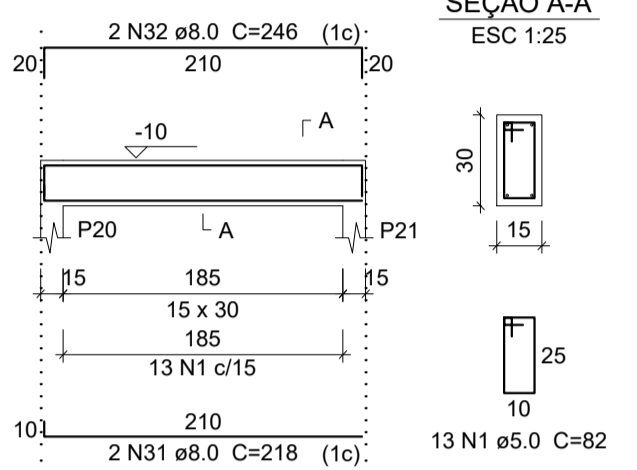
V6
ESC 1:50



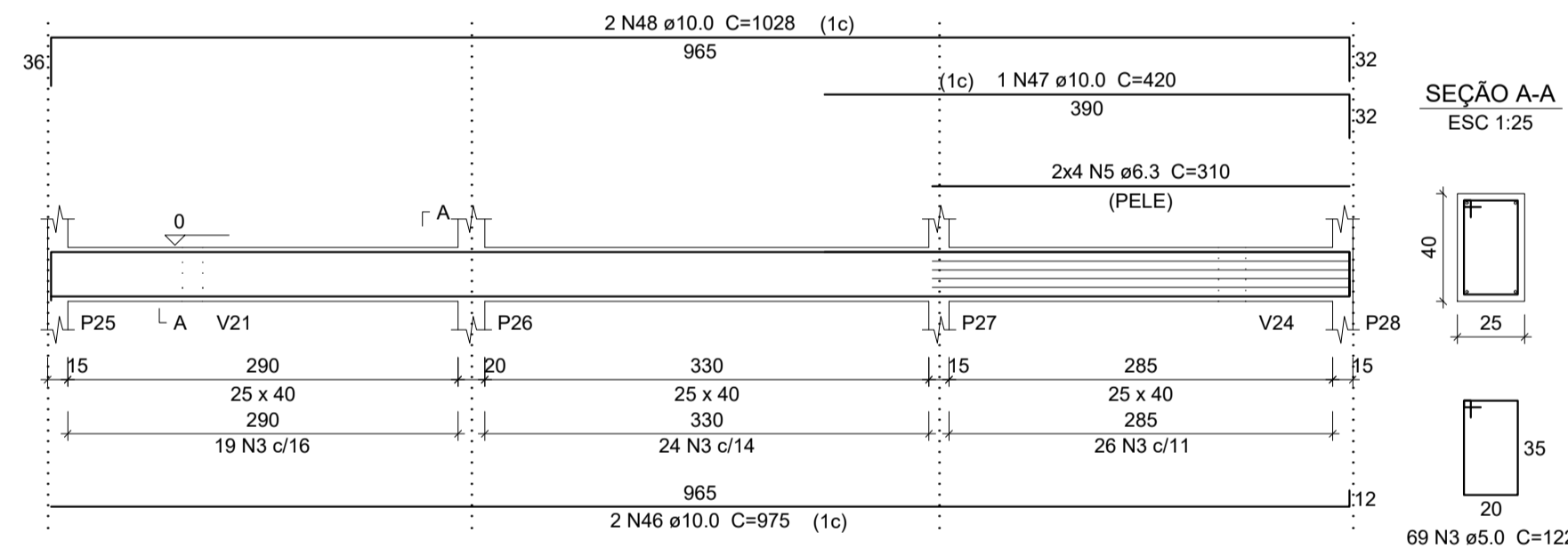
V7
ESC 1:50



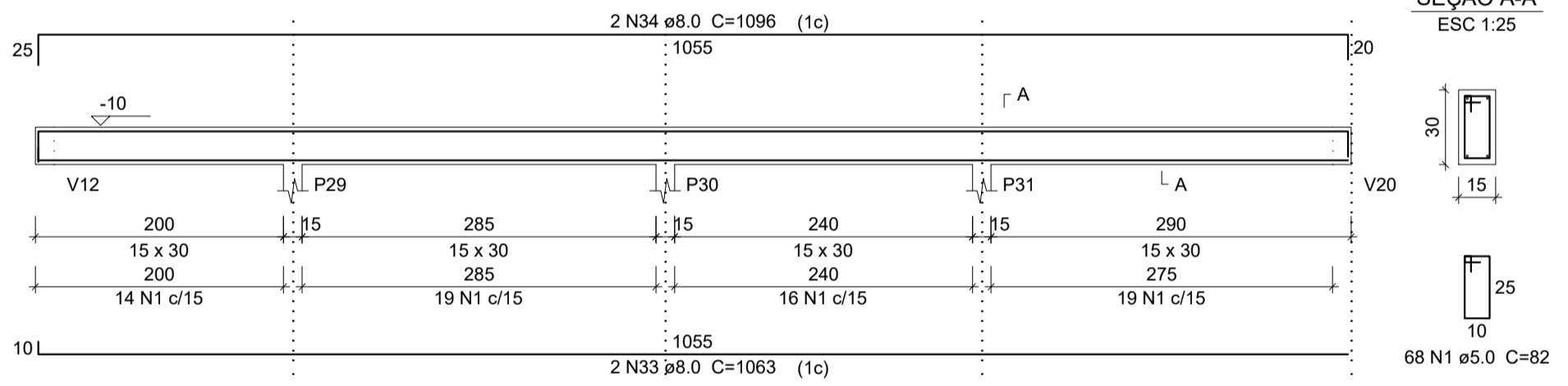
V8
ESC 1:50



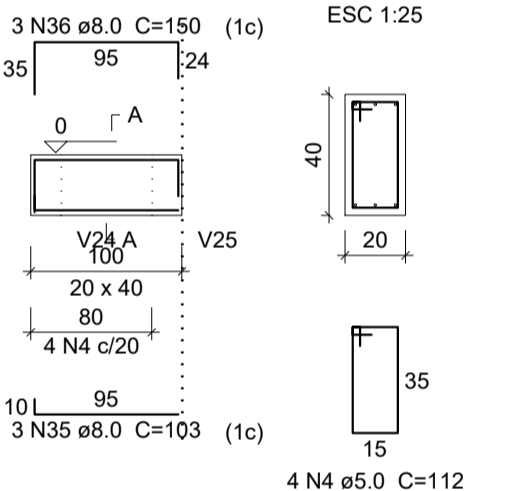
V9
ESC 1:50



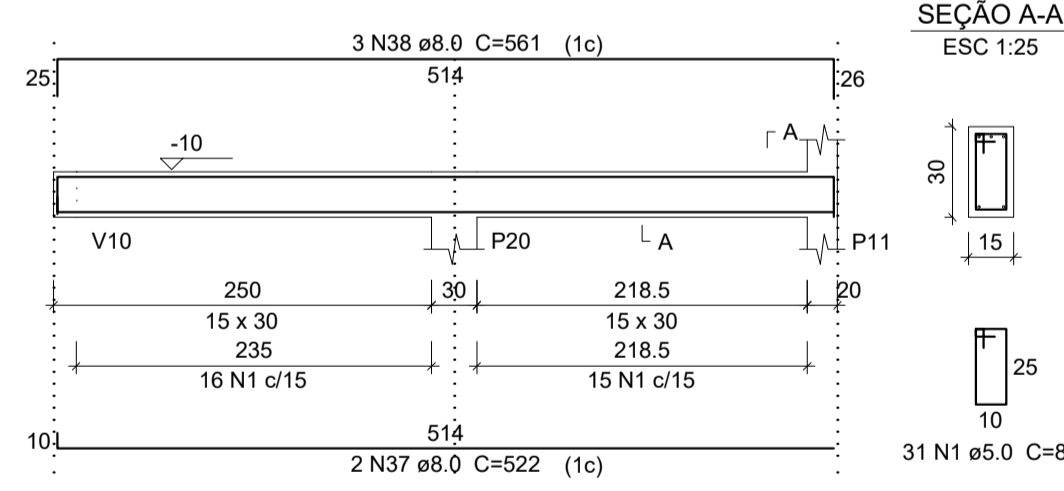
V10
ESC 1:50



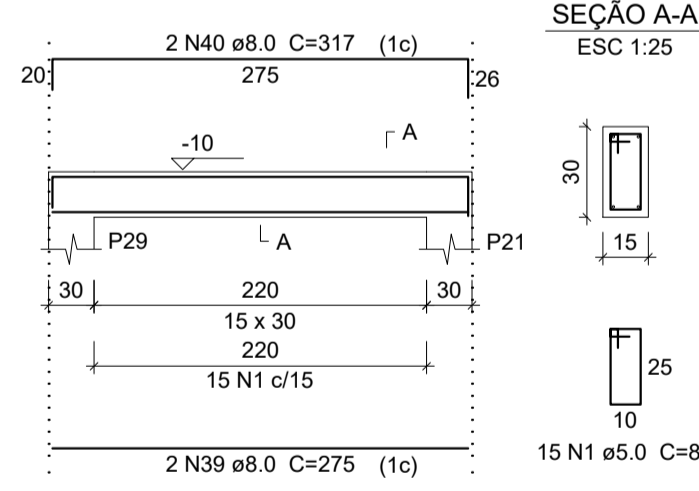
V11
ESC 1:50



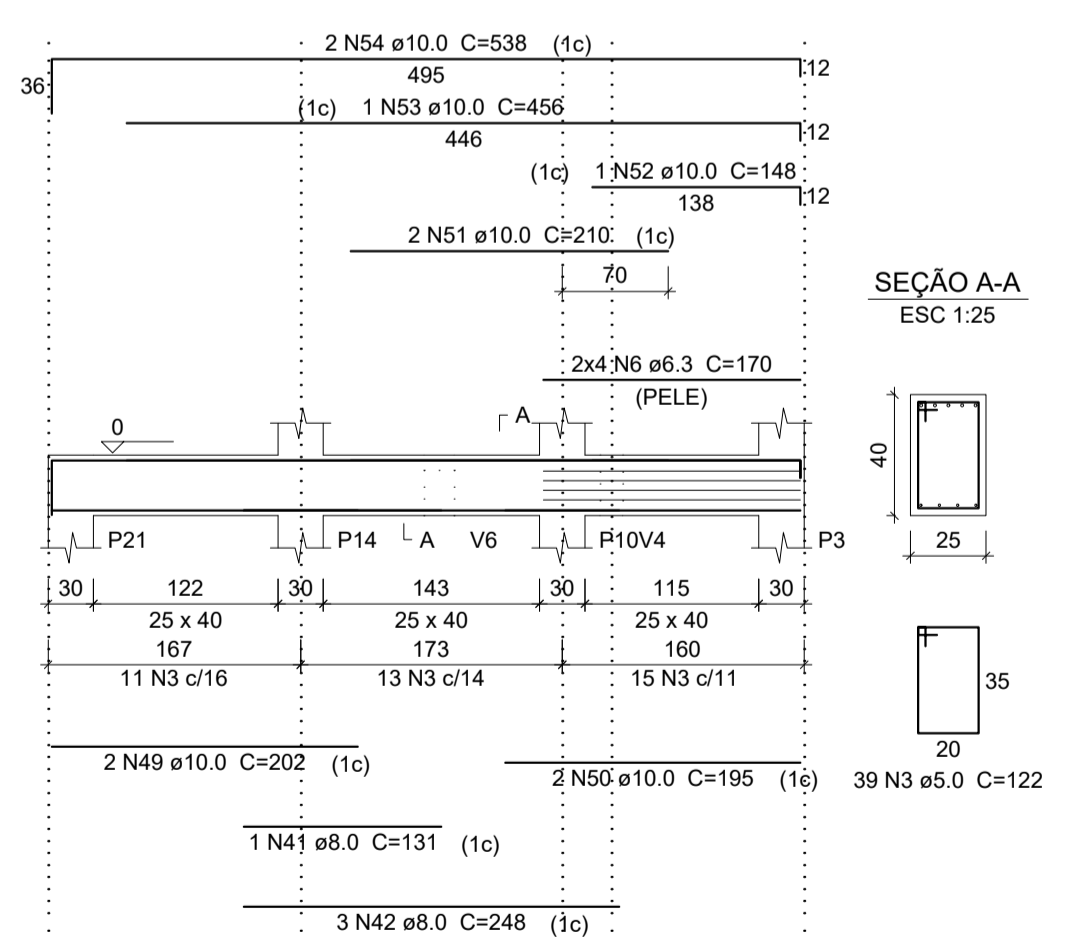
V12
ESC 1:50



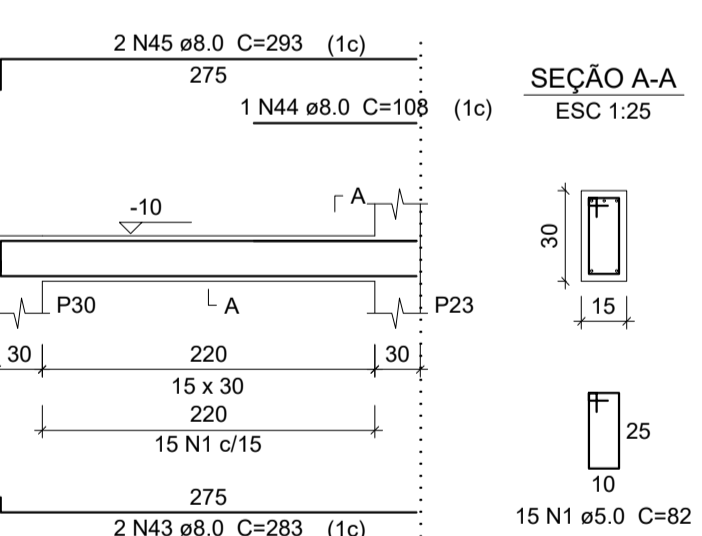
V13
ESC 1:50



V14
ESC 1:50



V15
ESC 1:50



Relação do aço

AÇO	N	DIAM (mm)	QUANT (Barras)	UNIT (cm)	C.TOTAL (cm)
CA60	1	5.0	370	82	30340
CA50	2	5.0	12	92	1104
	3	5.0	108	122	13176
	4	5.0	4	112	448
	5	6.3	8	310	2480
	6	6.3	8	170	1360
	7	8.0	3	265	795
	8	8.0	1	128	128
	9	8.0	2	306	612
	10	8.0	2	318	636
	11	8.0	1	151	151
	12	8.0	2	356	712
	13	8.0	1	402	402
	14	8.0	1	406	406
	15	8.0	2	961	1922
	16	8.0	2	316	632
	17	8.0	2	315	630
	18	8.0	2	351	702
	19	8.0	2	281	562
	20	8.0	2	311	622
	21	8.0	4	220	880
	22	8.0	1	83	83
	23	8.0	2	243	486
	24	8.0	1	238	238
	25	8.0	1	403	403
	26	8.0	2	990	1980
	27	8.0	2	343	686
	28	8.0	2	160	320
	29	8.0	2	1165	2330
	30	8.0	2	199	398
	31	8.0	2	218	436
	32	8.0	2	246	492
	33	8.0	2	1063	2126
	34	8.0	2	1096	2192
	35	8.0	3	103	309
	36	8.0	3	150	450
	37	8.0	2	522	1044
	38	8.0	3	561	1683
	39	8.0	2	275	550
	40	8.0	2	317	634
	41	8.0	1	131	131
	42	8.0	3	248	744
	43	8.0	2	283	566
	44	8.0	1	108	108
	45	8.0	2	293	586
	46	10.0	2	975	1950
	47	10.0	1	420	420
	48	10.0	2	1028	2056
	49	10.0	2	202	404
	50	10.0	2	195	390
	51	10.0	2	210	420
	52	10.0	1	148	148
	53	10.0	1	456	456
	54	10.0	2	538	1076
	55	12.5	2	1173	2346
	56	12.5	2	226	452

Resumo do aço

AÇO	DIAM (mm)	C.TOTAL (m)	PESO + 10% (kg)
CA50	6.3	38.4	10.3
	8.0	287.7	124.9
	10.0	73.2	49.6
	12.5	28	29.6
CA60	5.0	450.7	76.4
PESO TOTAL (kg)			
CA50		214.5	
CA60		76.4	

Volume de concreto (C-25) = 4.41 m³
Área de forma = 63.67 m²

Fábio Ernani Zortéa
Engenheiro Civil - CREA/SC 133170-7
R. Coronel Farrapo, 1141 - 1º andar - Campos Novos - (49) 3544.2463

Título: **ESTRUTURAL**

Descrição: **VIGAS DO PAVIMENTO TÉRREO - 01**

Resp. Técnico: **Fábio Ernani Zortéa - CREA/SC 133170-7**

Proprietário: **SAMAE-Serviço Autônomo Municipal de Água e Esgoto**
CNPJ: 83.158.105/0001-09

Localização da Obra: **Rua Padre Alfredo Trincheiro, Bairro Santo Antônio, CAMPOS NOVOS - SC**

Índices Urbanísticos: **Prancha: 19/20**

Data: **Outubro / 2016**

Arquivo: **Projetos_SAMAE_estrutural**

Escala: **Indicada**

Desenhista: **Céli Mecabó**