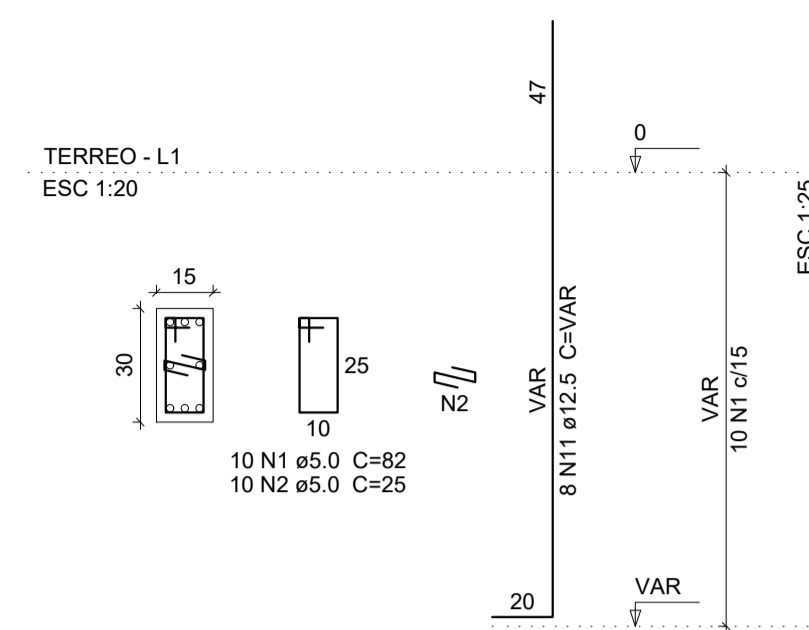
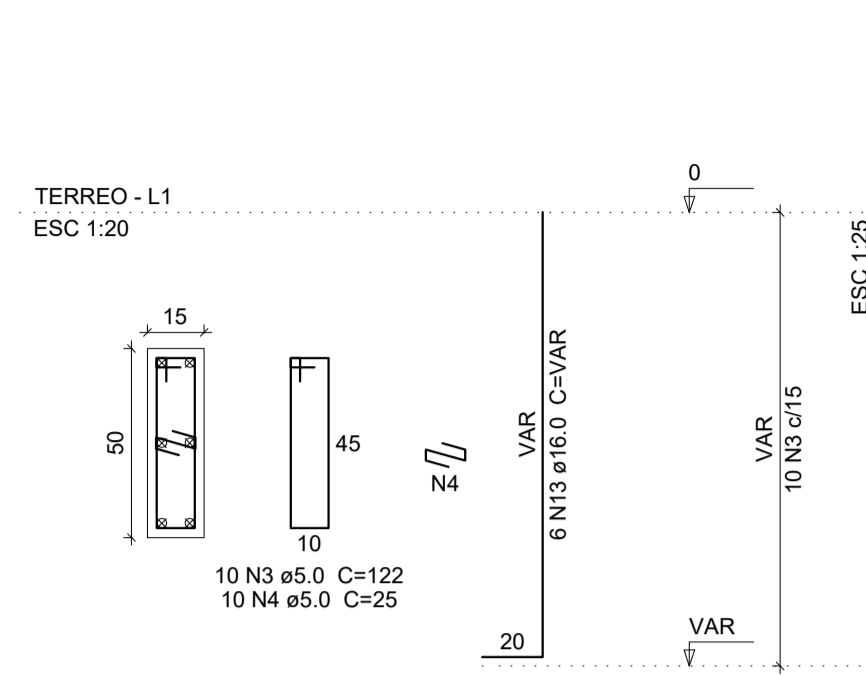


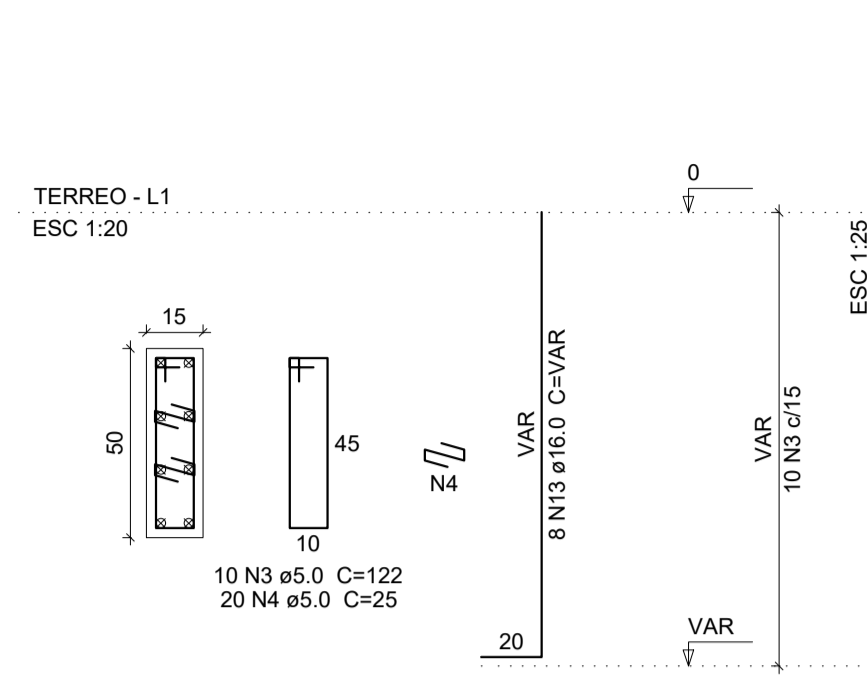
P3=P10



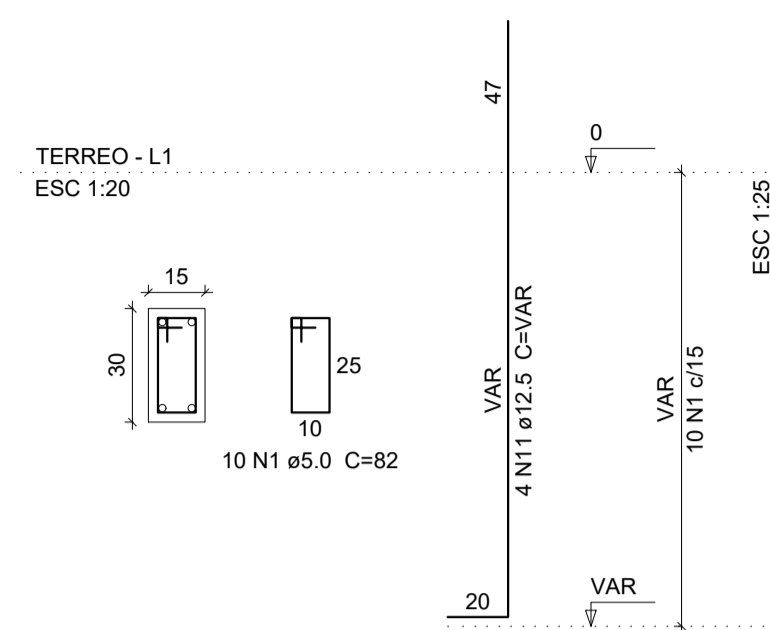
P4



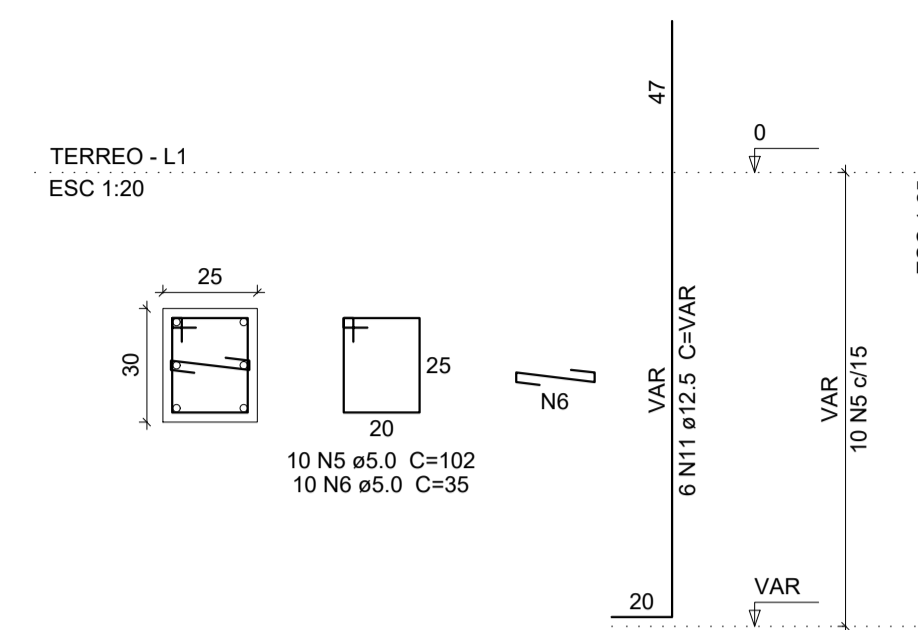
P5



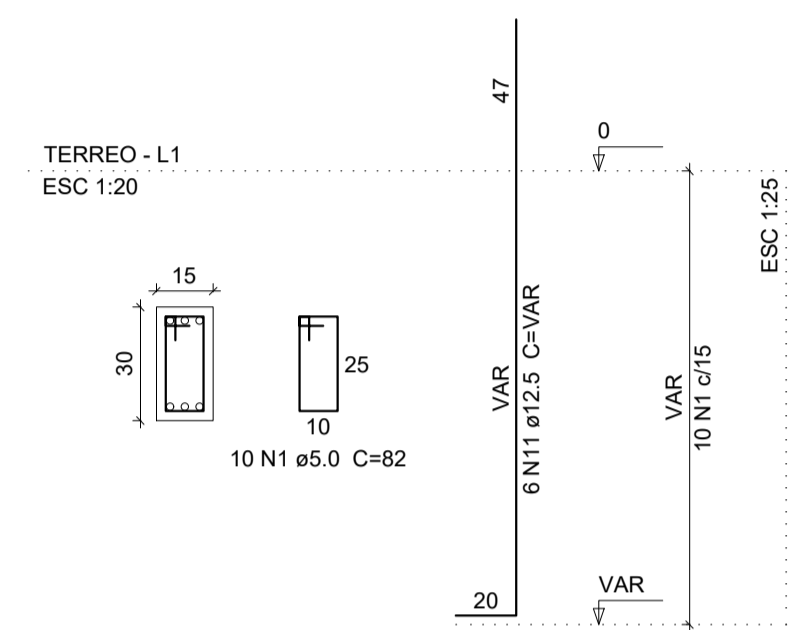
P6



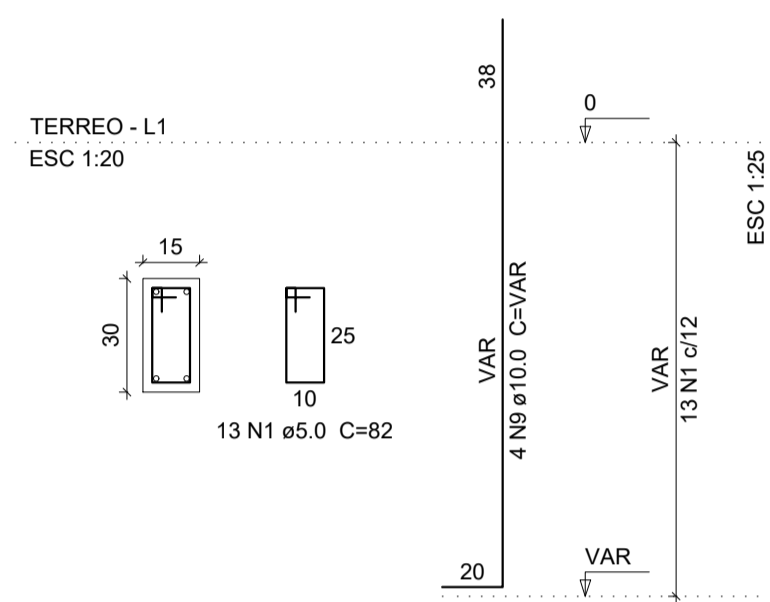
P7



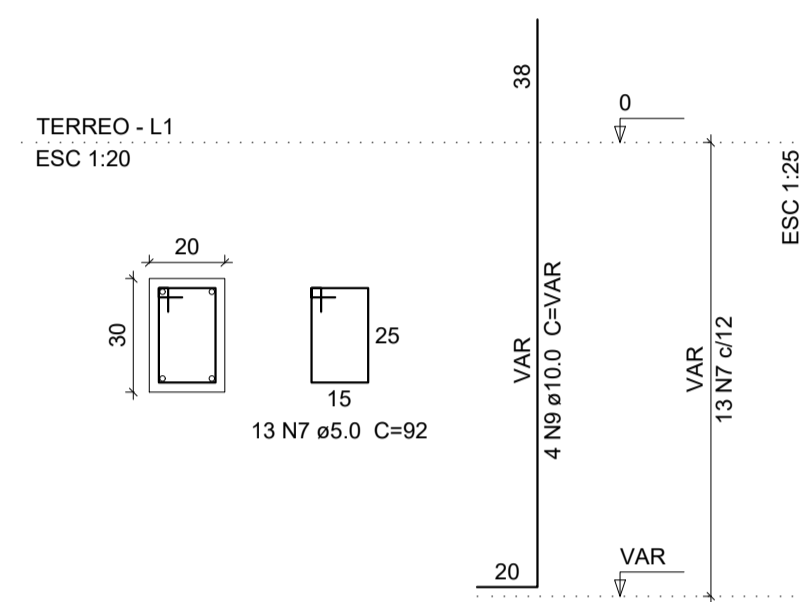
P8=P13=P27



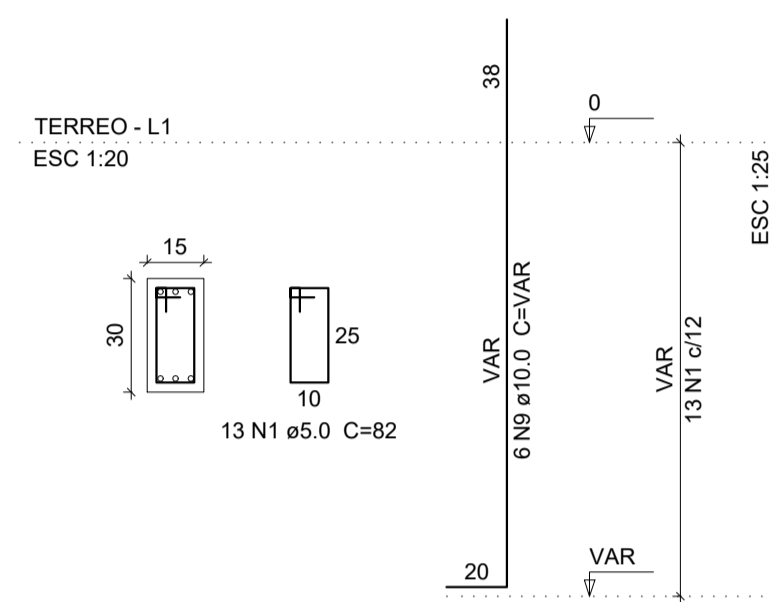
P9=P22=P25=P28



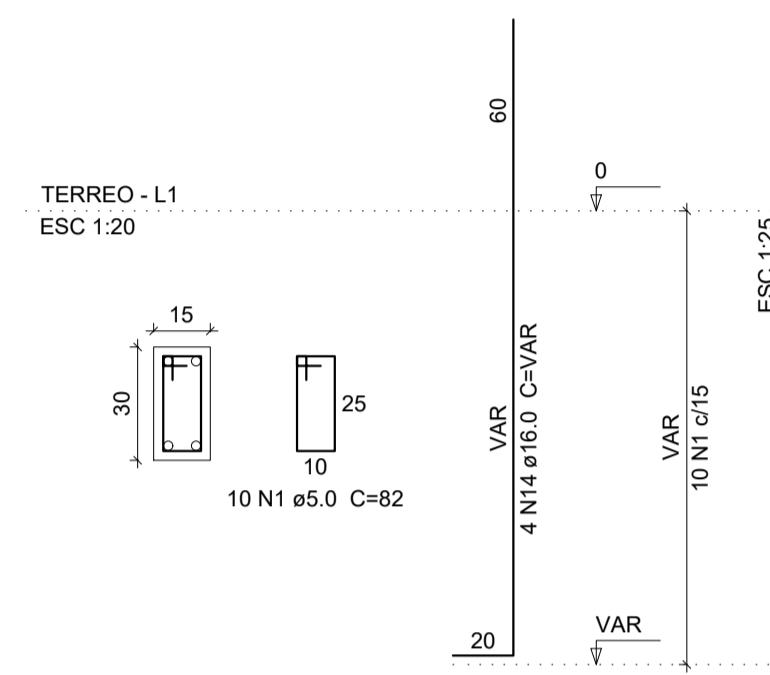
P11



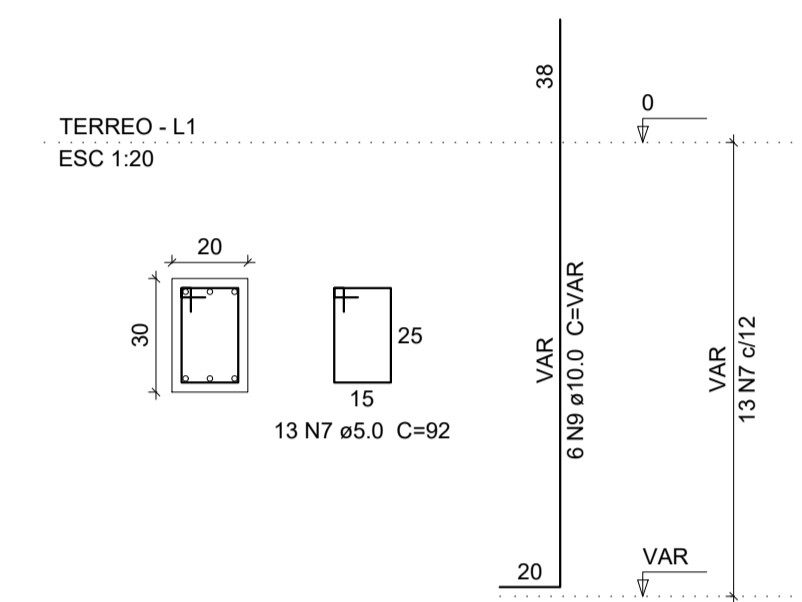
P12=P23



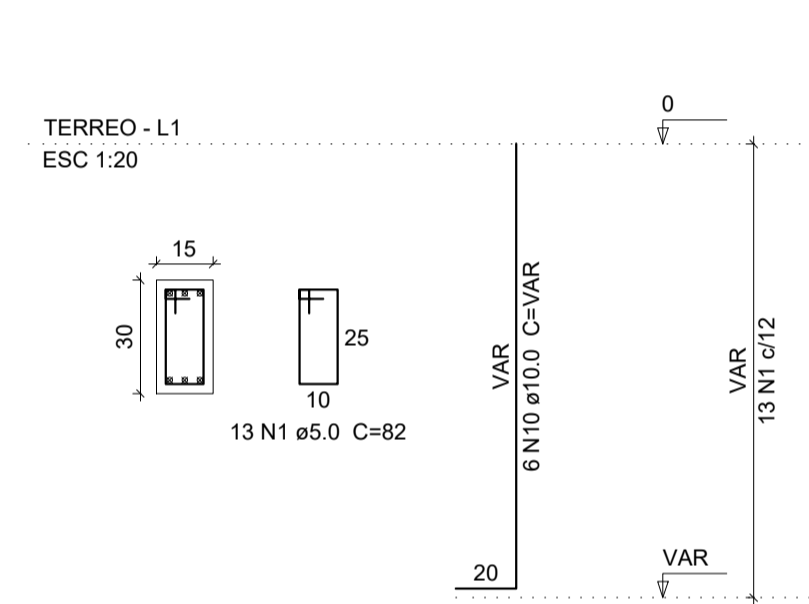
P14=P19



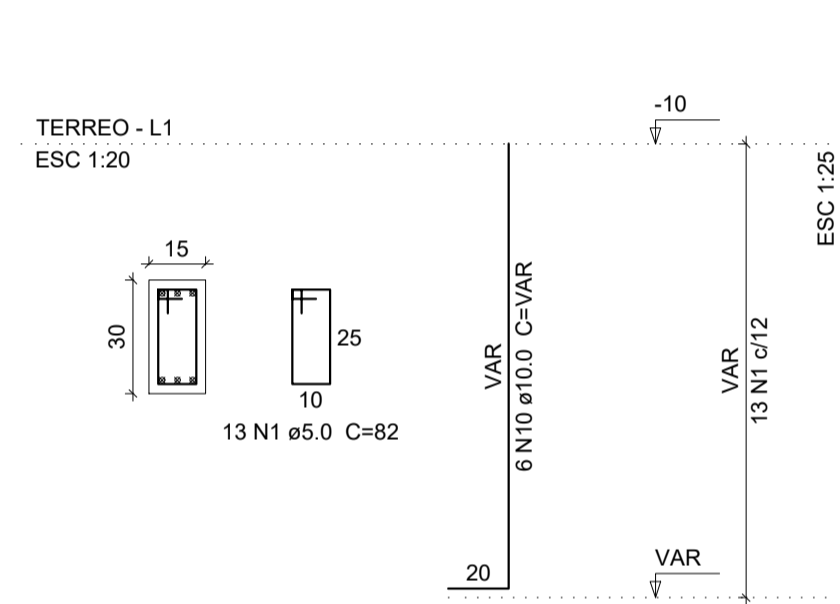
P15=P26



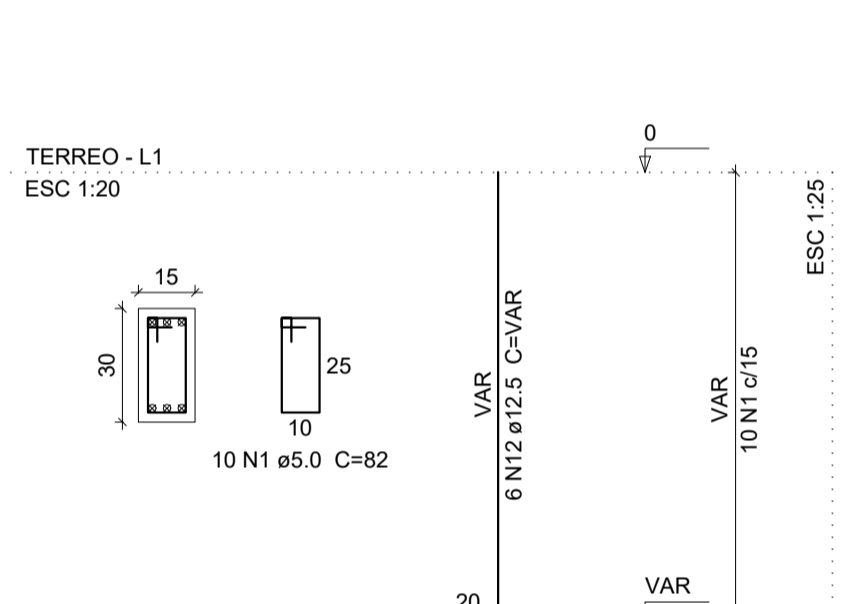
P16=P18



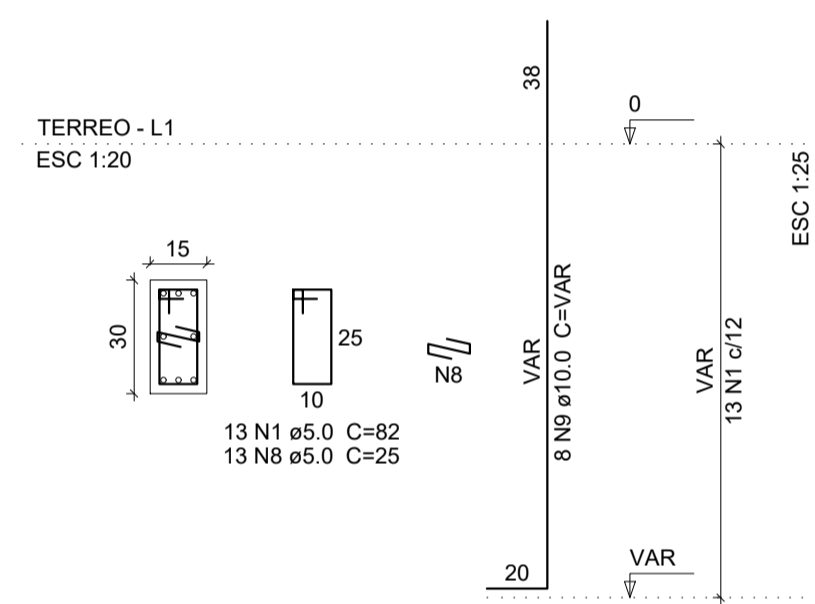
P20



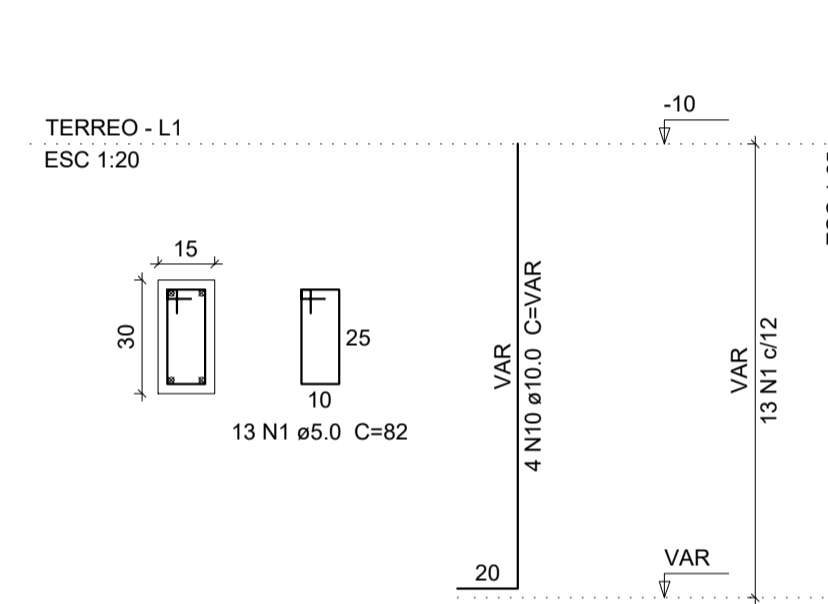
P21



P24



P29=P30=P31



Relação do aço

2xP3	P4	P5
P6	P7	3xP8
4xP9	P11	2xP12
2xP14	2xP15	2xP16
P20	P21	P24
3xP29		

AO	N	DIAM (mm)	QUANT (Barras)	UNIT (cm)	C.TOTAL (cm)	
CA60	1	5.0	259	82	21238	
	2	5.0	20	25	500	
	3	5.0	20	122	2440	
	4	5.0	30	25	750	
	5	5.0	10	102	1020	
	6	5.0	10	35	350	
	7	5.0	39	92	3588	
	8	5.0	13	25	325	
	CA50	9	10.0	52	VAR	VAR
		10	10.0	30	VAR	VAR
		11	12.5	44	VAR	VAR
		12	12.5	6	VAR	VAR
		13	16.0	14	VAR	VAR
		14	16.0	8	VAR	VAR

Resumo do aço

AO	DIAM (mm)	C.TOTAL (m)	PESO + 10 % (kg)
CA50	10.0	156.7	106.2
	12.5	104	110.2
	16.0	40.9	71
CA60	5.0	302.2	51.2
PESO TOTAL (kg)			
CA50			287.4
CA60			51.2

Volume de concreto (C-25) = 2.09 m³
Área de forma = 39.75 m²



Fábio Ernani Zortéa

Engenheiro Civil - CREA/SC 133170-7
R. Coronel Farrapo, 1141 - 1º andar - Campos Novos - (49) 3544.2463

ESTRUTURAL

PILARES PAVIMENTO TÉRREO

Resp. Técnico: Fábio Ernani Zortéa - CREA/SC 133170-7	Proprietário: SAMAE-Serviço Autônomo Municipal de Água e Esgoto CNPJ: 83.158.105/0001-09
Localização da Obra: Rua Padre Alfredo Trincheiro Bairro Santo Antônio CAMPOS NOVOS - SC	Índices Urbanísticos: Prancha: <div style="font-size: 2em; font-weight: bold; text-align: center;">15/20</div>
Data: Outubro / 2016	Escala: Indicada