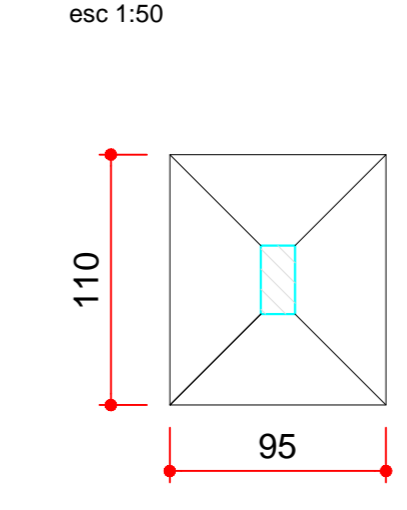
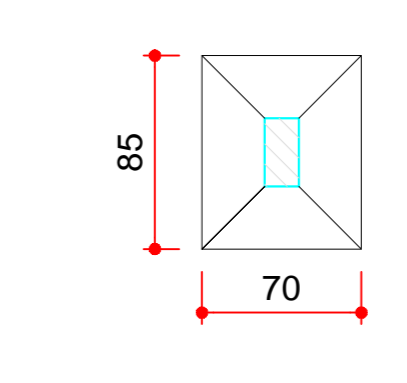


Pilar		
Nome	U <sup>o</sup> (cm)	Q <sup>o</sup> (t)
P1	15x30	8.0
P2	15x30	5.5
P3	15x30	12.3
P4	15x30	11.4
P5	15x30	4.6
P6	15x30	5.0
P7	15x30	7.6
P8	15x30	9.6
P9	12x30	7.3
P10	15x30	5.3
P11	15x30	4.5
P12	15x30	11.5
P13	15x30	9.9
P14	15x30	11.5
P15	15x30	7.7
P16	15x30	13.5
P17	15x30	12.1
P18	15x30	6.9
P19	15x30	11.8
P20	15x30	11.6
P21	15x30	11.5

S1=S3=S4=S6=S7=S8=S9=S14  
S16=S17=S18=S19=S20=S21

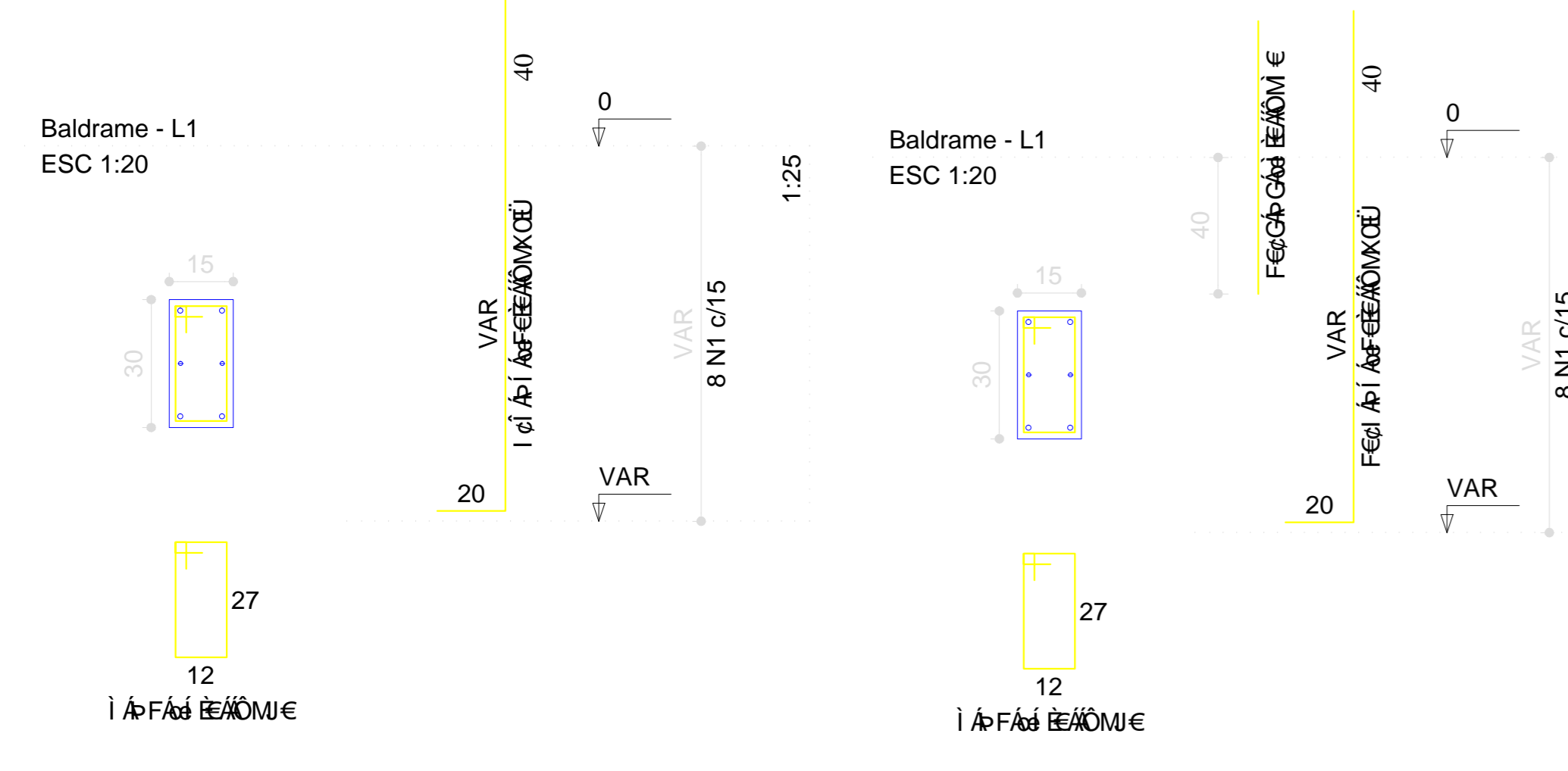


S2=S5=S10=S11=S12=S13=S15

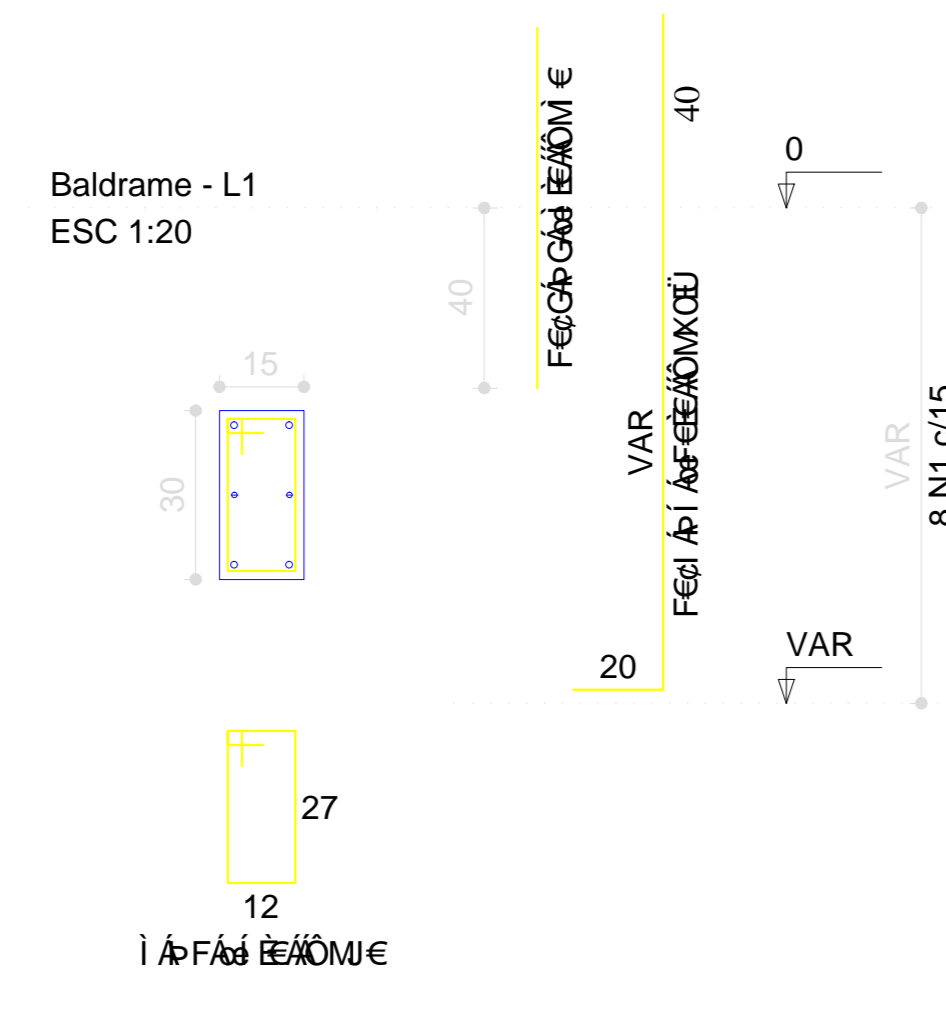


escala 1:50

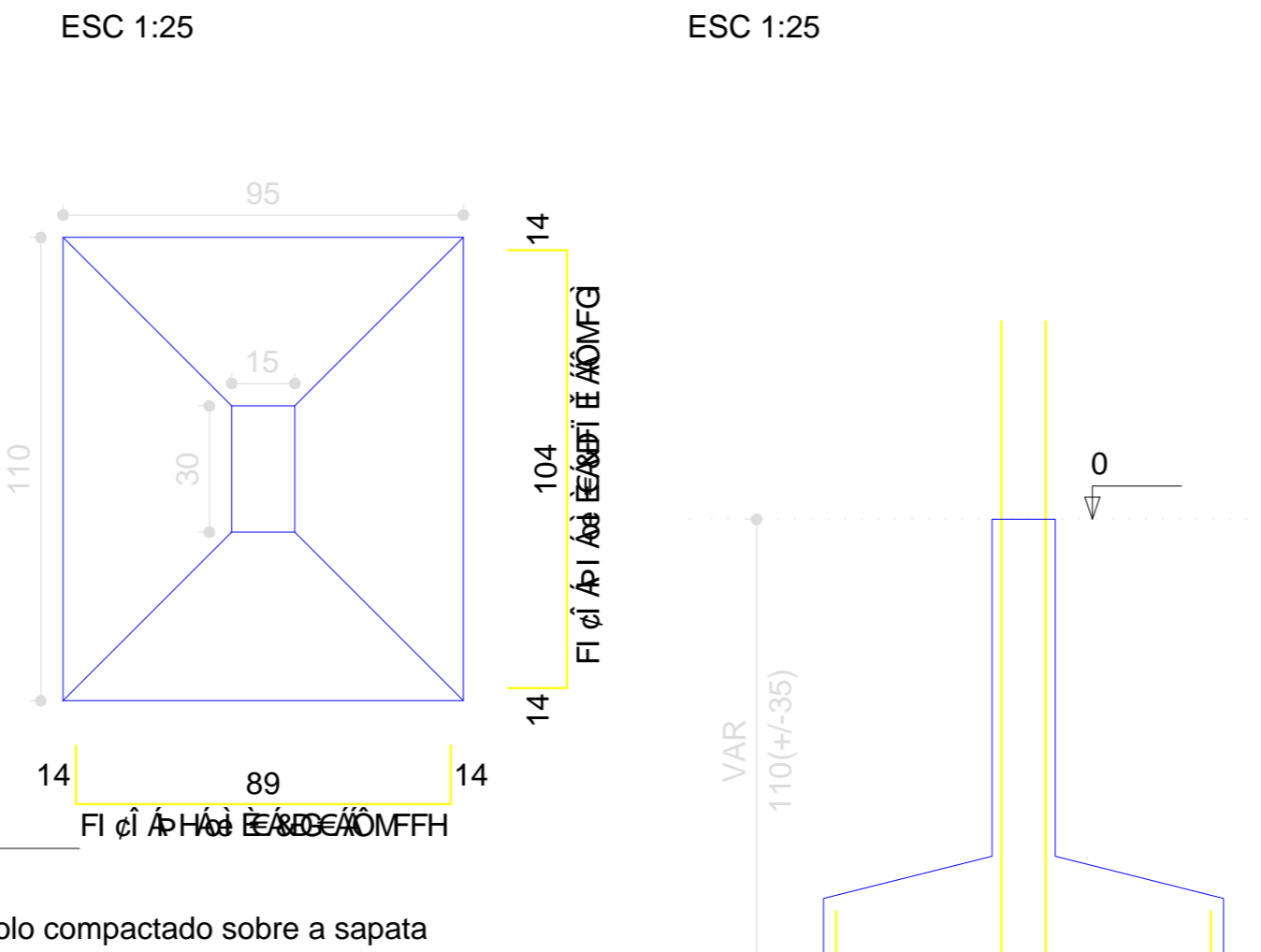
P3=P4=P16=P17



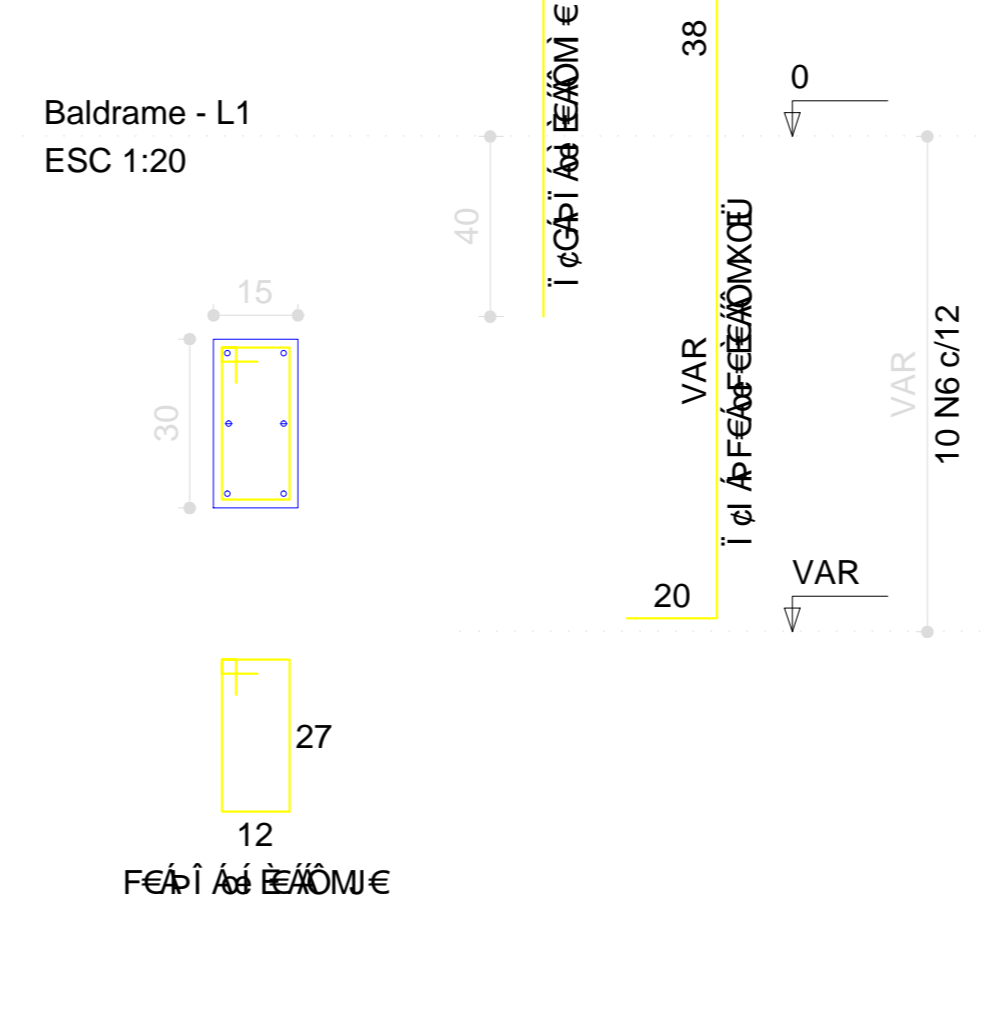
P1=P6=P7=P8=P9=P14  
P18=P19=P20=P21



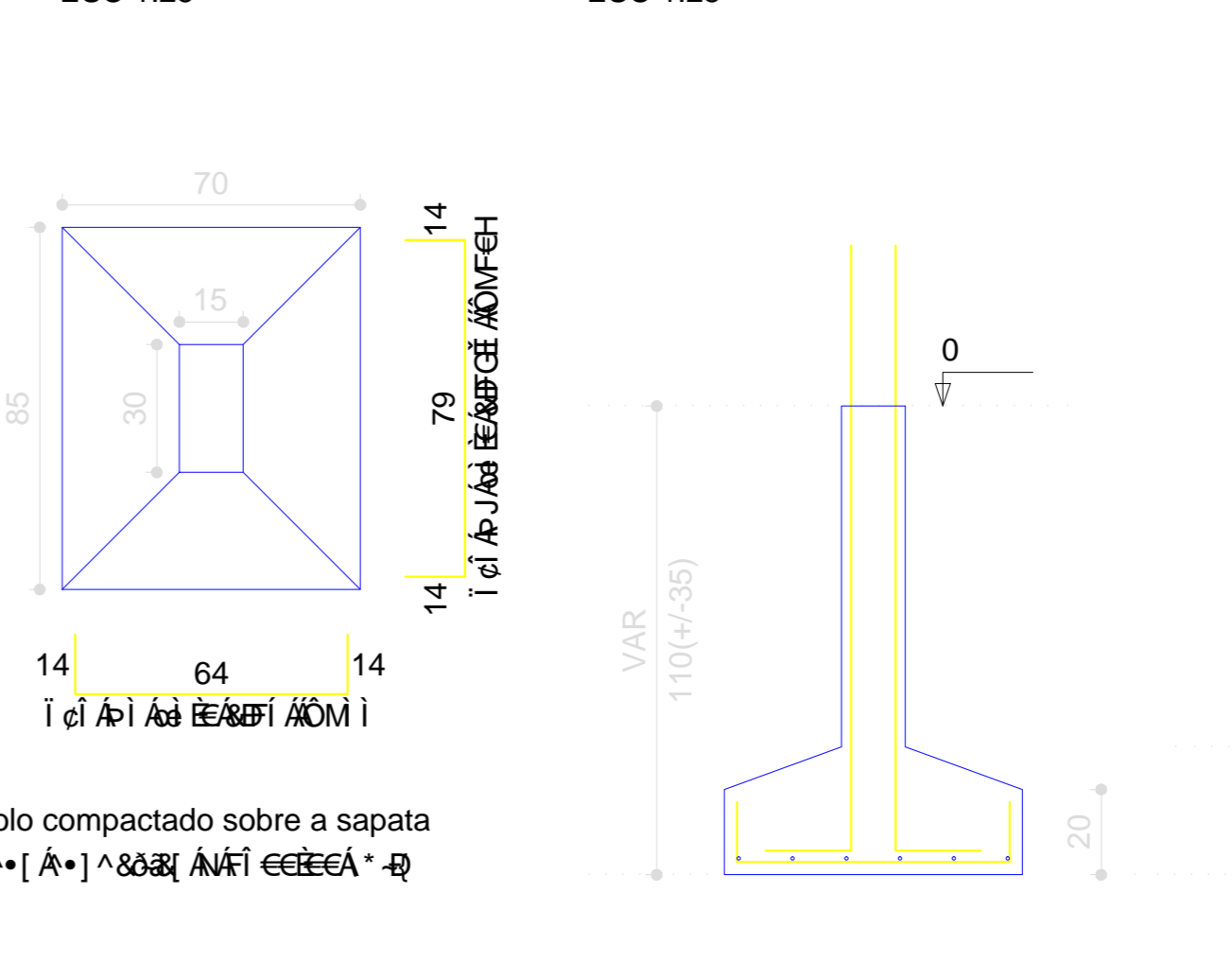
S1=S3=S4=S6=S7=S8=S9=S14  
S16=S17=S18=S19=S20=S21



P2=P5=P10=P11=P12=P13=P15



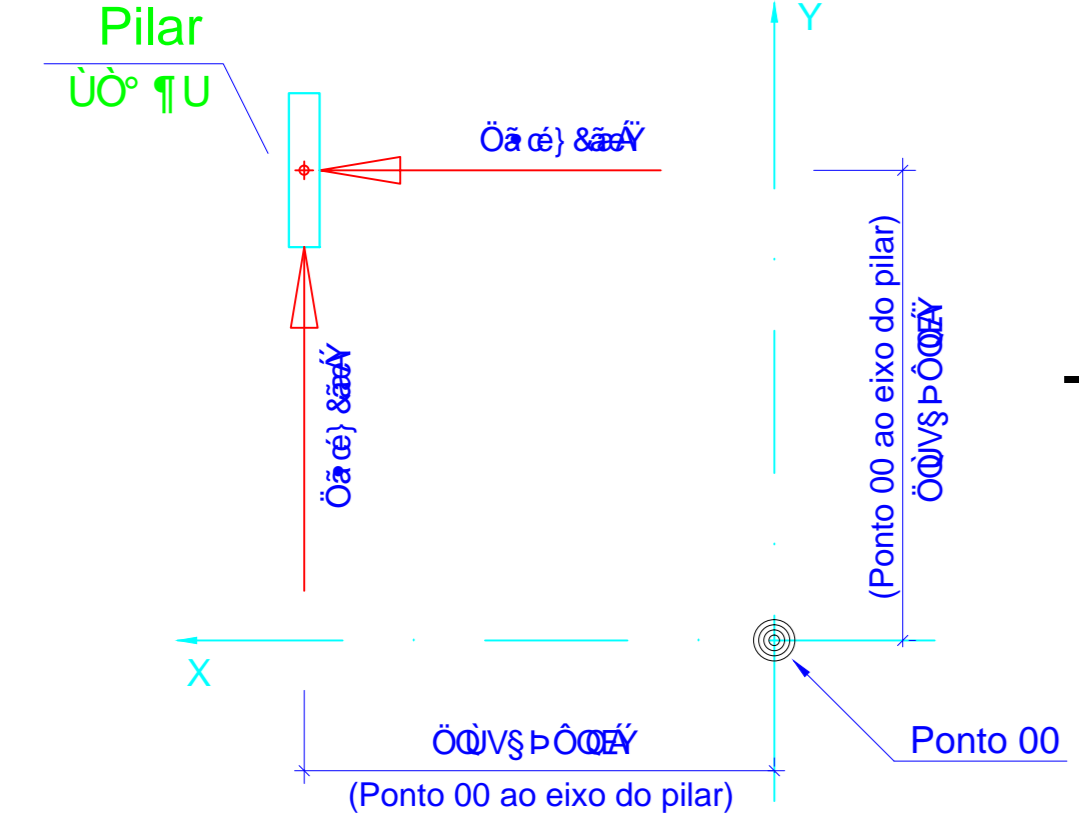
S2=S5=S10=S11=S12=S13=S15



### Detalhamento de Sapatas

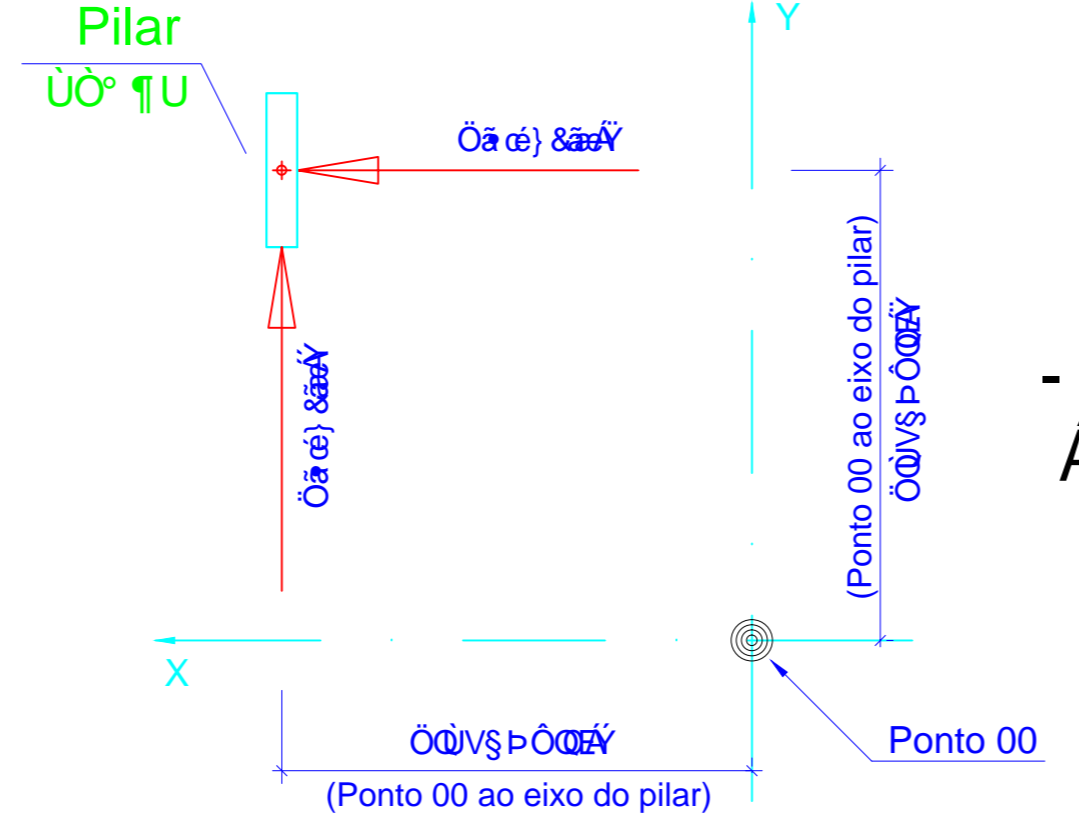
escala 1:20  
escala 1:25

### SISTEMA DE COORDENADAS



- SISTEMA DE COORDENADAS  
ÁNCORAS DO PILAR

### SISTEMA DE COORDENADAS



- SISTEMA DE COORDENADAS  
ÁNCORAS DO PILAR

### Quantificação de Materiais

ELEMENTO	Q <sup>o</sup> U	N	DIAM	Q	UNIT (cm)	C.TOTAL (cm)
14xS1	CA60	1	5.0	224	90	20160
	CA50	2	8.0	280	80	22400
	CA50	3	8.0	1176	113	132888
	CA50	4	8.0	1176	128	150528
7xS2	CA50	5	10.0	896	VAR	VAR
	CA60	6	5.0	70	90	6300
	CA50	7	8.0	98	80	7840
	CA50	8	8.0	294	88	25872
CA50	9	8.0	294	103	30282	
CA50	10	10.0	196	196	VAR	VAR

### Quantificação de Materiais

Q <sup>o</sup> U	DIAM	C.TOTAL (m)	PESO + 10% (kg)
CA50	8.0	3698.1	1605.1
CA60	10.0	1830.7	1241.5
CA60	5.0	264.6	44.9
PESO TOTAL			
CA50	2846.7		
CA60	44.9		

X (eixo X) e Y (eixo Y) são os eixos de referência para a localização dos pontos de ancoragem das sapatas.

ELEMENTO	Q <sup>o</sup> U	N	DIAM	Q	UNIT	C.TOTAL
CA60	1	1	5.0	80	90	7200
CA60	2	1	8.0	280	80	22400
CA60	3	1	8.0	1176	113	132888
CA60	4	1	8.0	1176	128	150528
CA60	5	1	10.0	896	VAR	VAR
CA60	6	1	5.0	70	90	6300
CA60	7	1	8.0	98	80	7840
CA60	8	1	8.0	294	88	25872
CA60	9	1	8.0	294	103	30282
CA60	10	1	10.0	196	196	VAR

Q <sup>o</sup> U	DIAM	C.TOTAL	PESO + 10%
CA50	8.0	3698.1	1605.1
CA60	10.0	1830.7	1241.5
CA60	5.0	264.6	44.9

Q <sup>o</sup> U	DIAM	C.TOTAL	PESO + 10%
CA50	8.0	3698.1	1605.1
CA60	10.0	1830.7	1241.5
CA60	5.0	264.6	44.9

Q <sup>o</sup> U	DIAM	C.TOTAL	PESO + 10%
CA50	8.0	3698.1	1605.1
CA60	10.0	1830.7	1241.5
CA60	5.0	264.6	44.9

JUAN W. MOORE E.

3eixos

LOCALIZAÇÃO DA FUNDAÇÃO / DETALHAMENTO DE SAPATAS

UNIDADE: 01

CONJUNTO: 01

DESENHO: Ana Paula Rosa

DATA: 22/10/2011

FOLHA: 01 / 07