

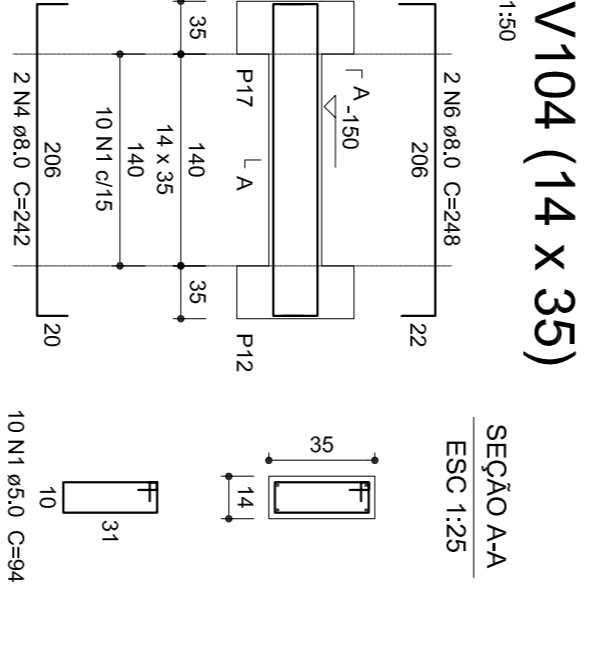
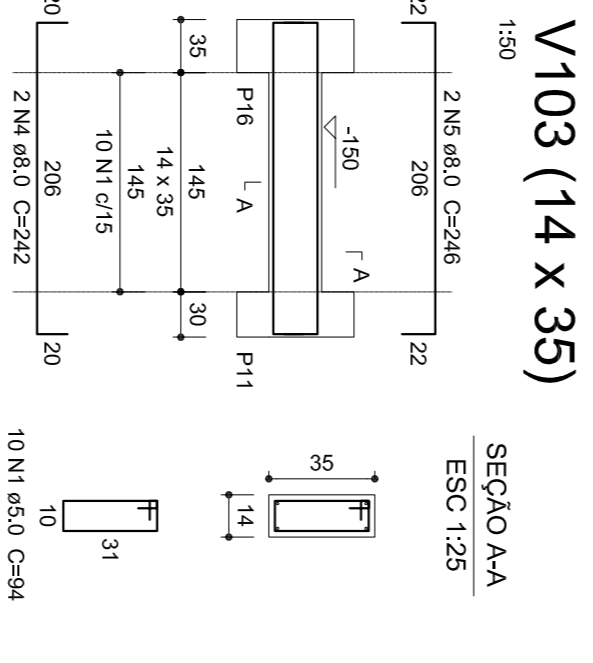
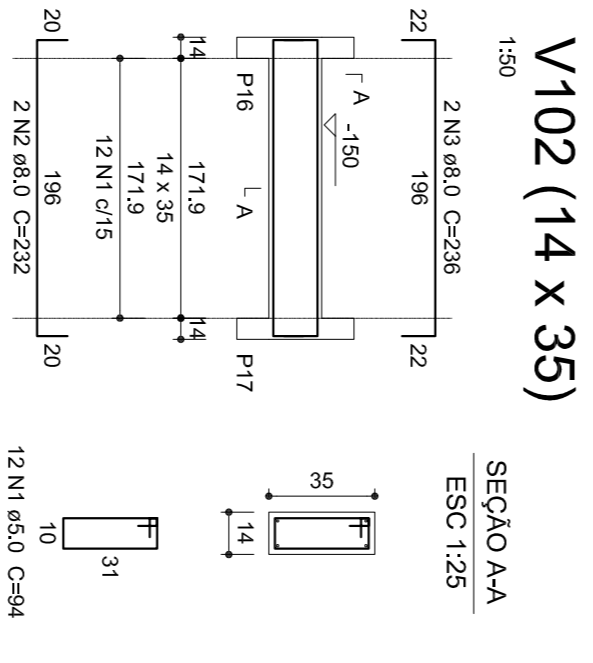
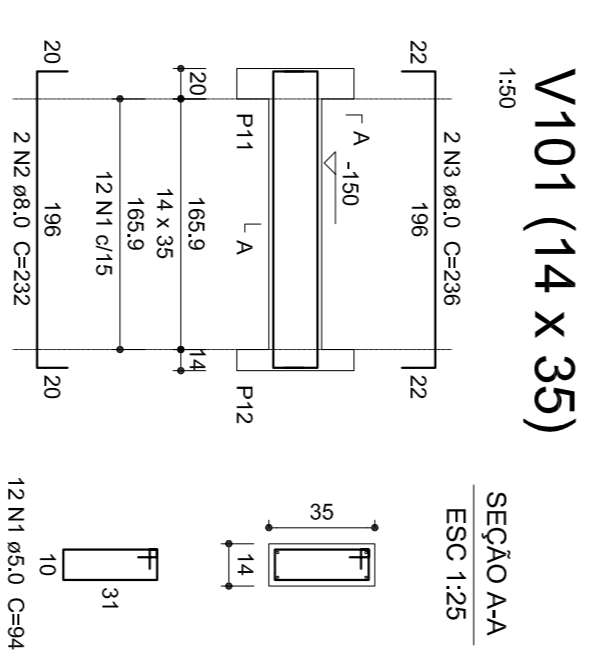
### Relação do aço

ACO	N	DIAM	Q	UNIT	C.TOTAL
CA60	1	5,0	72	CORR	3768
CA50	2	5,0	88		9972
	3	5,0	88		10912
	4	8,0	3		124
	5	8,0	3		839
	6	8,0	4		2817
	7	8,0	4		1384
	8	8,0	4		2865
	9	8,0	3		3892
	10	8,0	2		705
	11	8,0	2		425
	12	8,0	4		694
	13	10,0	3		604
	14	10,0	2		218
					225
					572
					1144

ACO	DIAM	C.TOTAL	PESO + 10 %
CA60	8,0	140,1	60,8
CA50	10,0	42,5	28,8
CA60	5,0	237,6	40,3
<b>PESO TOTAL</b>			
CA50	89,6		
CA60	40,3		

VAl. de concreto total (C-25) = 1,71 m³  
Área de forma total = 27,23 m²



### Relação do aço

ACO	N	DIAM	Q	UNIT	C.TOTAL
CA60	1	5,0	44		4136
CA50	2	8,0	4		232
	3	8,0	4		238
	4	8,0	2		944
	5	8,0	2		482
	6	8,0	2		248
					496

ACO	DIAM	C.TOTAL	PESO + 10 %
CA50	8,0	38,3	16,6
CA60	5,0	41,4	7
<b>PESO TOTAL</b>			
CA50	16,6		
CA60	7		

VAl. de concreto total (C-25) = 0,4 m³  
Área de forma total = 6,89 m²

**STUDIO - D ARQUITETURA**  
RUA BELVALMIR CORREIA Nº 71 - CAMPOS NOVOS SC - FONES: 54219711 / 54986 - EMAIL: LUIZ@STUDIO-D.COM.BR

# PROJETO ESTRUTURAL

**PROJETO ESTRUTURAL**

ENGENHEIRO  
Av. Catarinense Belincantina Neto esq. com a Rua  
Vergílio Antunes

RESERVADO DIBRIMBO E ASSINATURA

RESERVADO DIBRIMBO E ASSINATURA

RESPONSÁVEL TÉCNICO PROJETISTA:  
ENR. CIVIL DIERSON RAMOS GLASBRAPP  
CREA-SC 58.0294-9

RESPONSÁVEL TÉCNICO EXECUÇÃO:

DATA  
04/04/2011

FRANCHA  
04/04

RESERVADO DIBRIMBO E ASSINATURA

DEFINIÇÃO  
**Detalhamento das vigas do térreo**