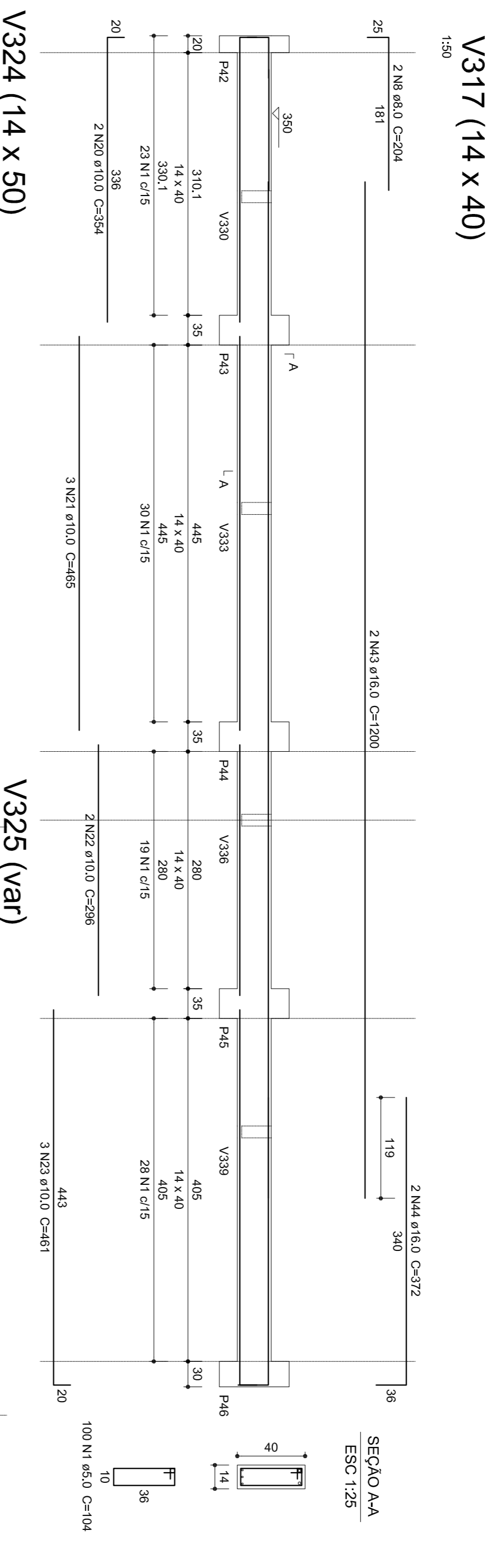


Relação do aço

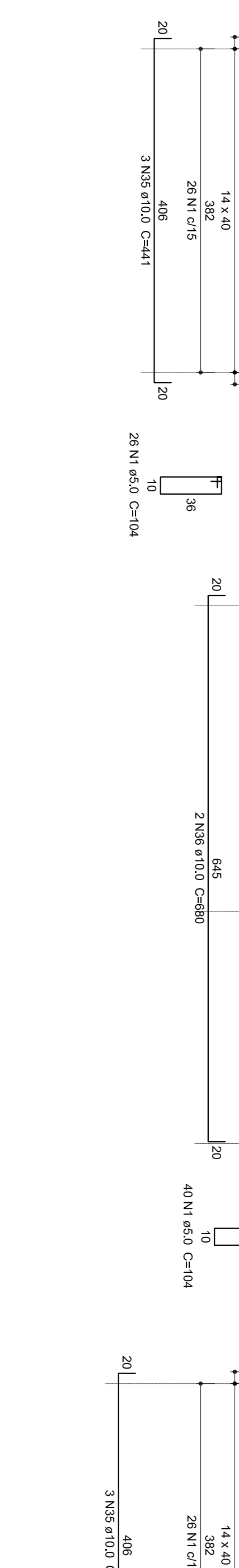
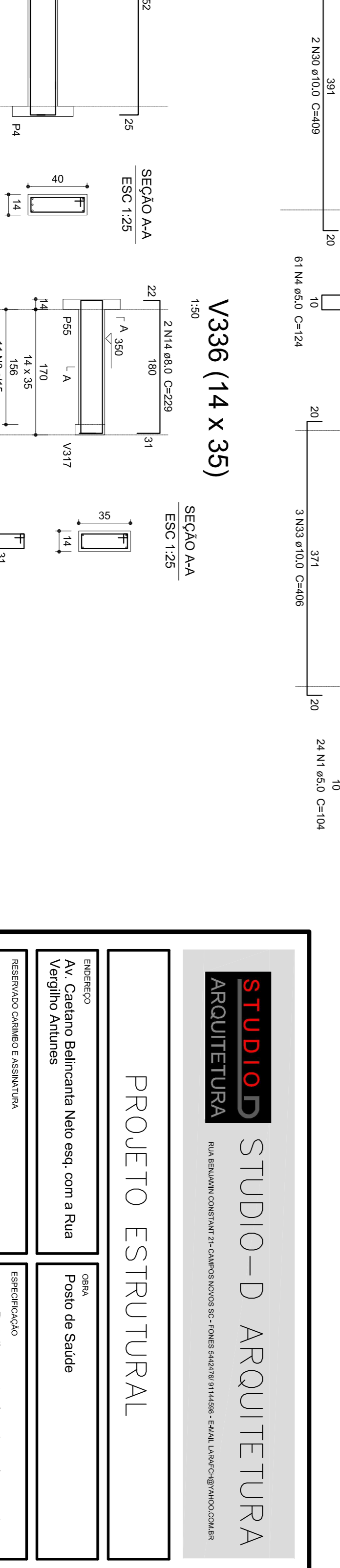
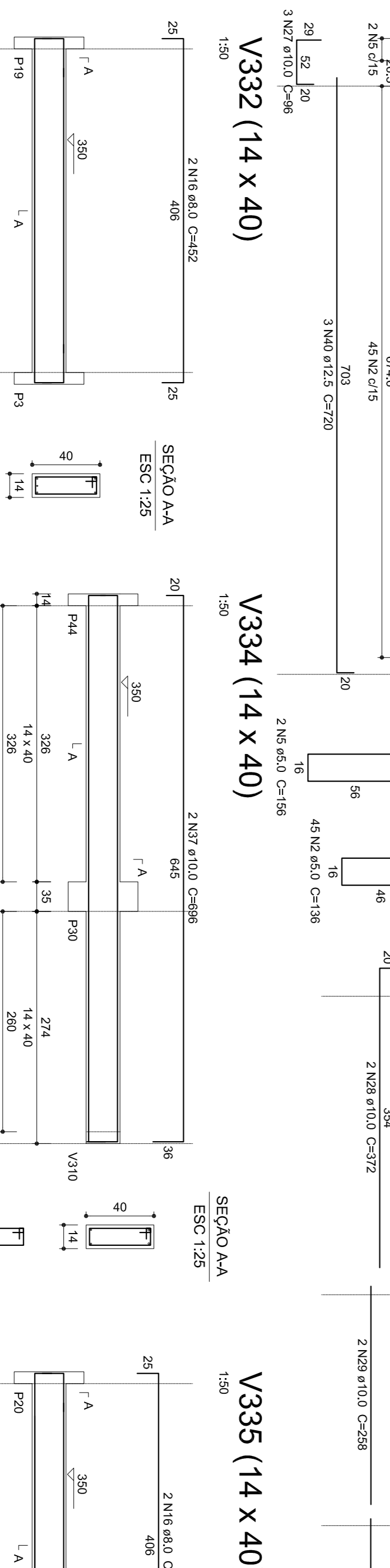
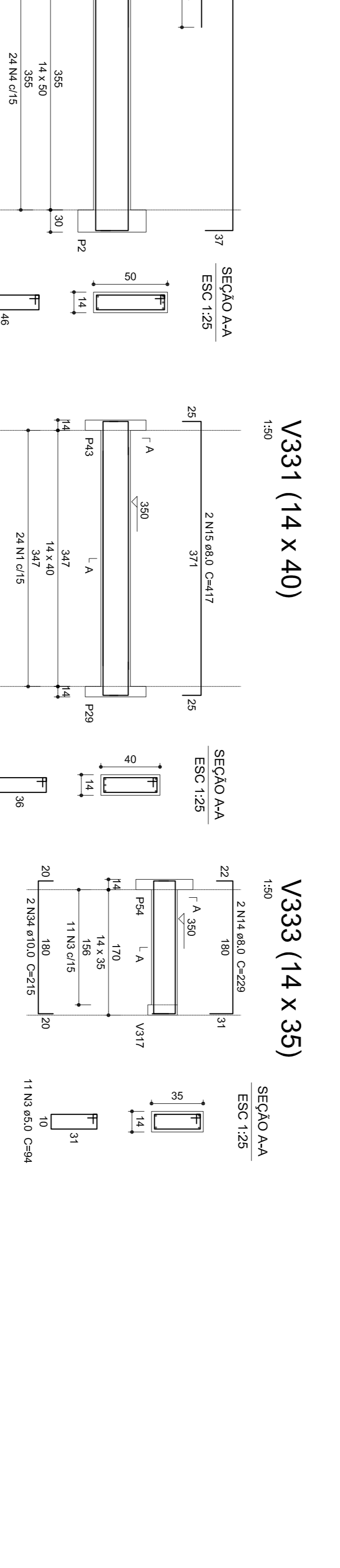
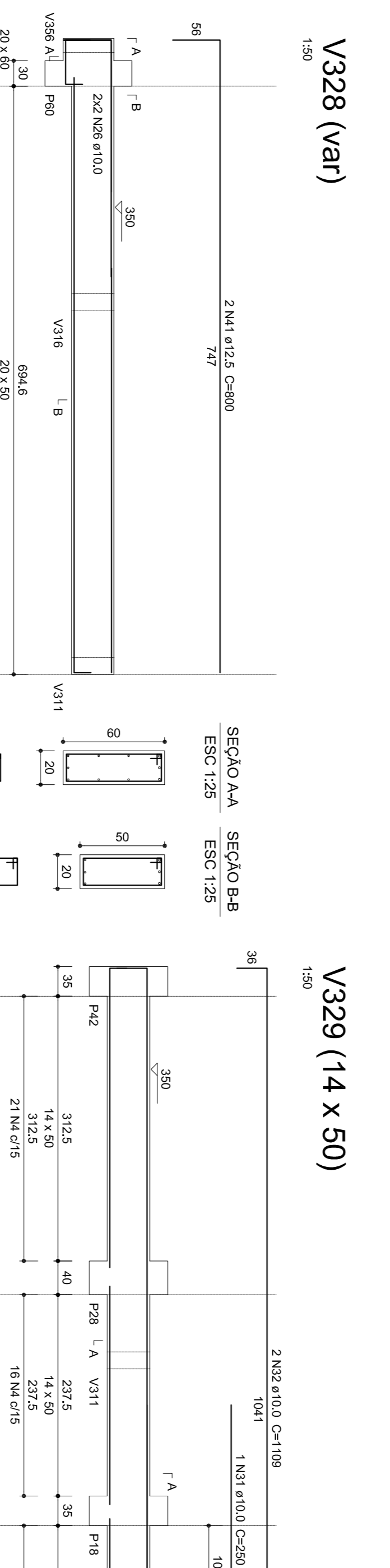
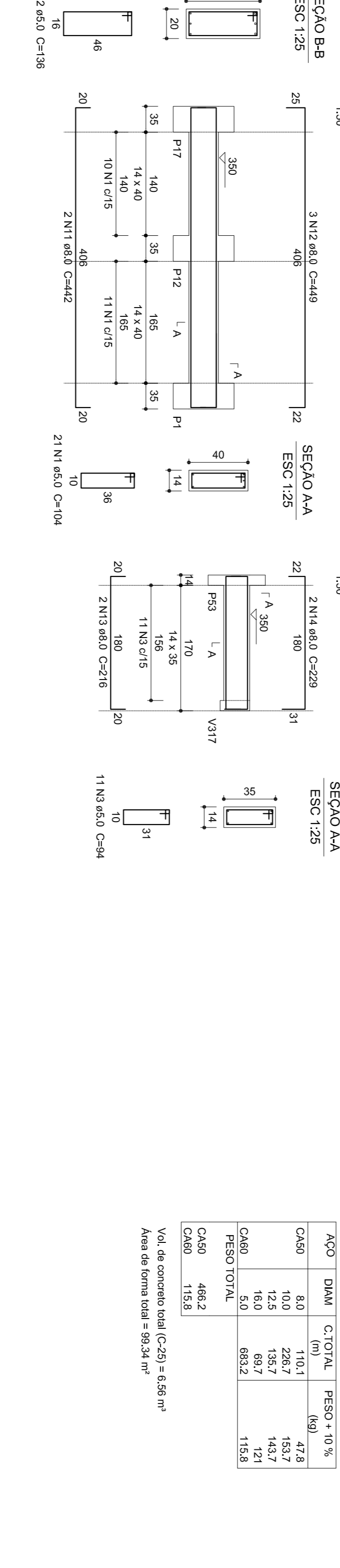
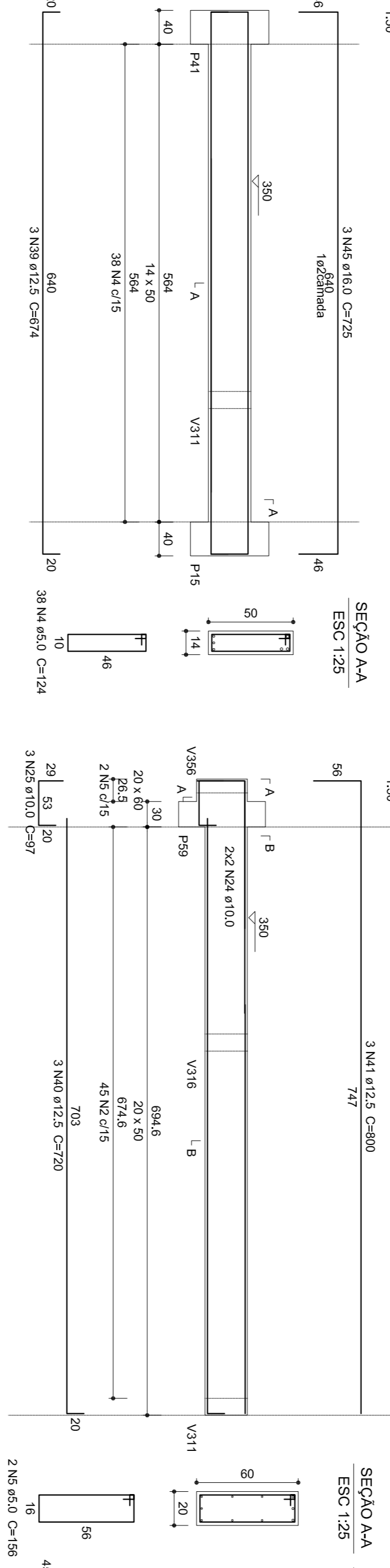
ACO	N	DIAM	Q	UNIT	C.TOTAL
		(mm)	(cm ³)	(cm ³)	(cm ³)
CA60	1	5,0	302	104	31408
V314	2	5,0	133	136	18088
V316	3	5,0	63	592	5922
V318	4	5,0	94	124	12278
V320	5	5,0	99	124	12278
V322	6	5,0	99	124	12278
V324	7	5,0	99	124	12278
V326	8	5,0	10	154	1540
V328	9	5,0	10	154	1540
V330	10	5,0	2	204	408
V332	11	5,0	2	252	504
V334	12	5,0	2	252	504
V336	13	5,0	2	252	504
V338	14	5,0	2	252	504
V340	15	5,0	2	252	504
V317	16	5,0	2	252	504
V319	17	5,0	2	252	504
V321	18	5,0	2	252	504
V323	19	5,0	2	252	504
V325	20	5,0	2	252	504
V327	21	5,0	2	252	504
V329	22	5,0	2	252	504
V331	23	5,0	2	252	504
V333	24	5,0	2	252	504
V335	25	5,0	2	252	504
V337	26	5,0	2	252	504
V339	27	5,0	2	252	504
V341	28	5,0	2	252	504
V342	29	5,0	2	252	504
V343	30	5,0	2	252	504
V344	31	5,0	2	252	504
V345	32	5,0	2	252	504
V346	33	5,0	2	252	504
V347	34	5,0	2	252	504
V348	35	5,0	2	252	504
V349	36	5,0	2	252	504
V350	37	5,0	2	252	504
V351	38	5,0	2	252	504
V352	39	5,0	2	252	504
V353	40	5,0	2	252	504
V354	41	5,0	2	252	504
V355	42	5,0	2	252	504
V356	43	5,0	2	252	504
V357	44	5,0	2	252	504
V358	45	5,0	2	252	504
V359	46	5,0	2	252	504
V360	47	5,0	2	252	504
V361	48	5,0	2	252	504
V362	49	5,0	2	252	504
V363	50	5,0	2	252	504
V364	51	5,0	2	252	504
V365	52	5,0	2	252	504
V366	53	5,0	2	252	504
V367	54	5,0	2	252	504
V368	55	5,0	2	252	504
V369	56	5,0	2	252	504
V370	57	5,0	2	252	504
V371	58	5,0	2	252	504
V372	59	5,0	2	252	504
V373	60	5,0	2	252	504
V374	61	5,0	2	252	504
V375	62	5,0	2	252	504
V376	63	5,0	2	252	504
V377	64	5,0	2	252	504
V378	65	5,0	2	252	504
V379	66	5,0	2	252	504
V380	67	5,0	2	252	504
V381	68	5,0	2	252	504
V382	69	5,0	2	252	504
V383	70	5,0	2	252	504
V384	71	5,0	2	252	504
V385	72	5,0	2	252	504
V386	73	5,0	2	252	504
V387	74	5,0	2	252	504
V388	75	5,0	2	252	504
V389	76	5,0	2	252	504
V390	77	5,0	2	252	504
V391	78	5,0	2	252	504
V392	79	5,0	2	252	504
V393	80	5,0	2	252	504
V394	81	5,0	2	252	504
V395	82	5,0	2	252	504
V396	83	5,0	2	252	504
V397	84	5,0	2	252	504
V398	85	5,0	2	252	504
V399	86	5,0	2	252	504
V400	87	5,0	2	252	504
V401	88	5,0	2	252	504
V402	89	5,0	2	252	504
V403	90	5,0	2	252	504
V404	91	5,0	2	252	504
V405	92	5,0	2	252	504
V406	93	5,0	2	252	504
V407	94	5,0	2	252	504
V408	95	5,0	2	252	504
V409	96	5,0	2	252	504
V410	97	5,0	2	252	504
V411	98	5,0	2	252	504
V412	99	5,0	2	252	504
V413	100	5,0	2	252	504



Resumo do aço

ACO	DIAM	C.TOTAL	PESO + 10%
	(mm)	(m ³)	(kg)
CA60	8,0	110,1	47,8
V314	10,0	208,7	153,7
V316	12,5	135,7	143,7
V318	16,0	69,7	121
CA60	5,0	693,2	115,8
PESO TOTAL			461,2
CA50	461,2		115,8
CA60	115,8		

Vol. de concreto total (C-25) = 6,56 m³
 Área de forma total = 99,24 m²



STUDIO-D ARQUITETURA
 RUA BELVALIA CORRENTIN 71-CAMPOS NOVOS SC - FONES: 51417911/51417912 - EMAIL: LUIZ@STUDIO-D.COM.BR

PROJETO ESTRUTURAL

CLIENTE:
 Poso de Saúde

RESPONSÁVEL TÉCNICO PROJETO:
 ENG. CIVIL DIEGOSON RAVAS GLASBAPP
 CREMASC-58.028/4

RESPONSÁVEL TÉCNICO EXECUÇÃO:

RESERVADO DIREITO E ASSINATURA

RESERVADO DIREITO E ASSINATURA

RESERVADO DIREITO E ASSINATURA

ÁREA TOTAL DA CONSTRUÇÃO:
 730,01 m²

DATA:
 02/04

FRANQUIA