

P1=P10=P12=P16=P17

P11

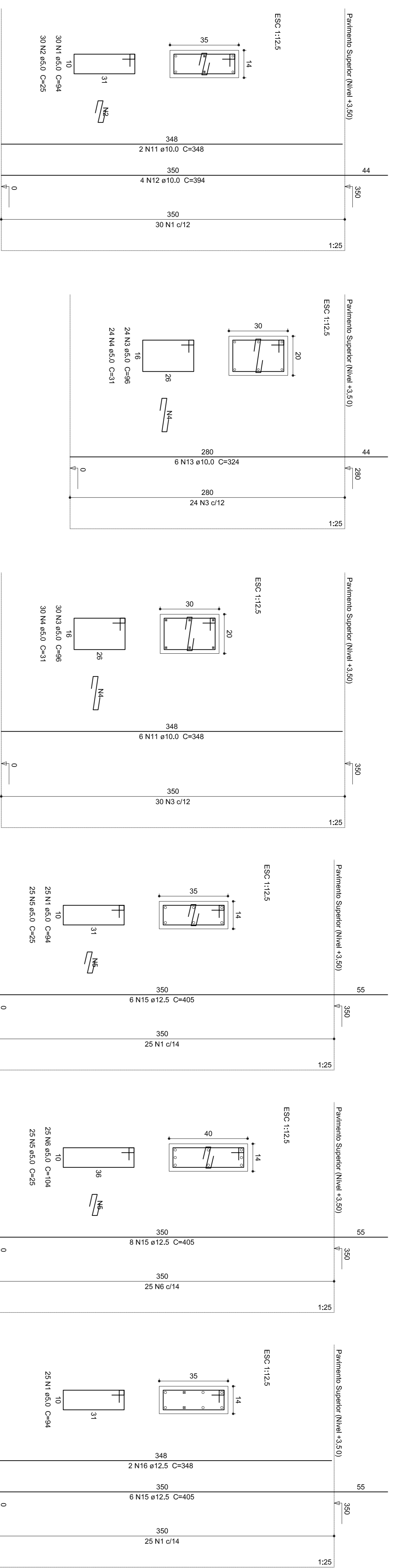
P13

P14=P20=P21=P30=P35=P39=P44

P15

P18=P19=P49

Relação do aço

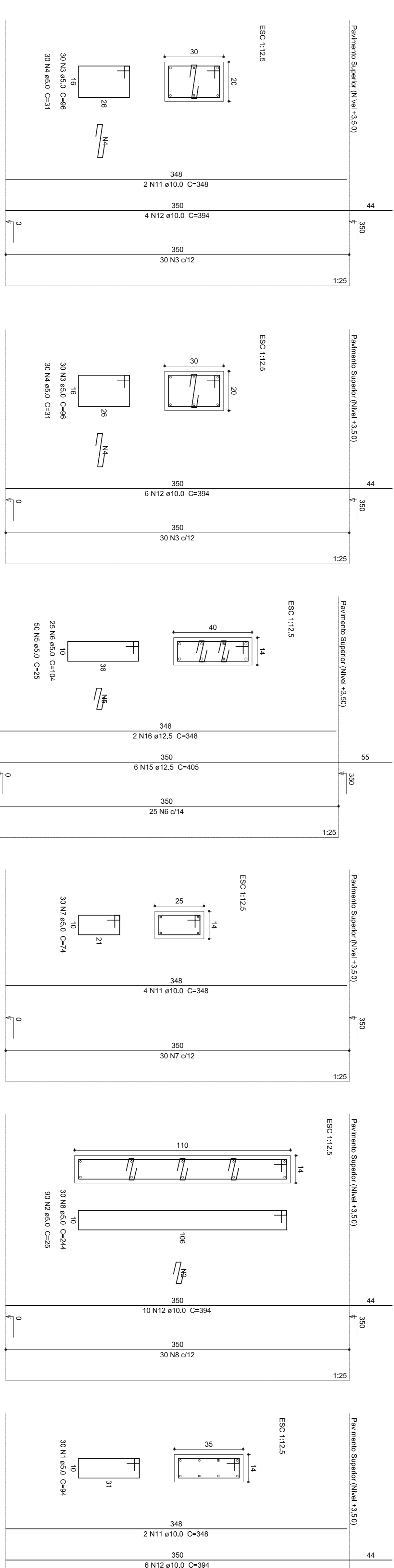


ACO	N	DIAM	Q	UNIT	C/TOTAL
CA80			(m <sup>2</sup> )	(kg/m <sup>2</sup> )	(kg/700)
CA80	1	5,0	550	25	6000
CA80	2	5,0	240	25	6000
CA80	3	5,0	174	96	16704
CA80	4	5,0	174	31	5394
CA80	5	5,0	450	25	11250
CA80	6	5,0	175	104	18200
CA80	7	5,0	30	24	7200
CA80	8	5,0	30	244	7320
CA80	9	5,0	48	106	5088
CA80	10	5,0	30	84	2520
CA80	11	10,0	28	348	9744
CA80	12	10,0	78	394	30732
CA80	13	10,0	8	324	1944
CA80	14	10,0	8	324	1944
CA80	15	12,5	104	402	42200
CA80	16	12,5	24	348	8352

**Resumo do aço**

ACO	DIAM	C/TOTAL	PESO + 10%
CA80	(mm)	(kg)	(kg)
CA80	10,0	438,1	297,1
CA80	12,5	504,8	594,8
CA80	5,0	1284	214,3
<b>PESO TOTAL</b>			<b>214,3</b>
CA80	831,9		
CA80	214,3		

Vol. de concreto total (C=20) = 7,25 m<sup>3</sup>  
 Área de forma total = 135,59 m<sup>2</sup>



P2

P22=P23=P24

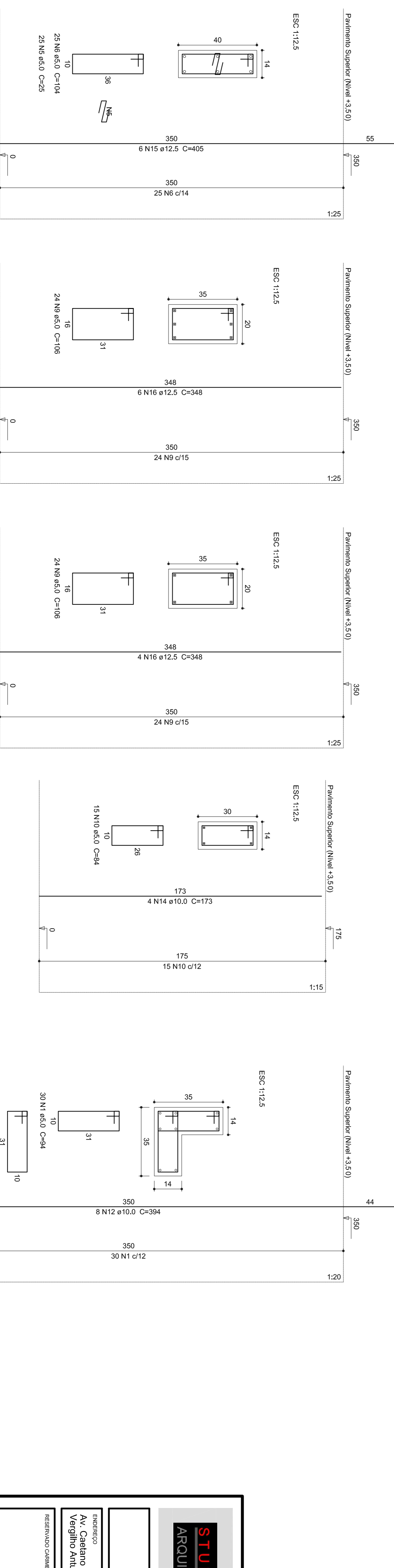
P25=P28=P29=P41

P26

P27

P3=P4=P5

ACO	N	DIAM	Q	UNIT	C/TOTAL
CA80			(m <sup>2</sup> )	(kg/m <sup>2</sup> )	(kg/700)
CA80	1	5,0	550	25	6000
CA80	2	5,0	240	25	6000
CA80	3	5,0	174	96	16704
CA80	4	5,0	174	31	5394
CA80	5	5,0	450	25	11250
CA80	6	5,0	175	104	18200
CA80	7	5,0	30	24	7200
CA80	8	5,0	30	244	7320
CA80	9	5,0	48	106	5088
CA80	10	5,0	30	84	2520
CA80	11	10,0	28	348	9744
CA80	12	10,0	78	394	30732
CA80	13	10,0	8	324	1944
CA80	14	10,0	8	324	1944
CA80	15	12,5	104	402	42200
CA80	16	12,5	24	348	8352



P31=P34

P32

P33

P36=P37

P40



ACO	N	DIAM	Q	UNIT	C/TOTAL
CA80			(m <sup>2</sup> )	(kg/m <sup>2</sup> )	(kg/700)
CA80	1	5,0	550	25	6000
CA80	2	5,0	240	25	6000
CA80	3	5,0	174	96	16704
CA80	4	5,0	174	31	5394
CA80	5	5,0	450	25	11250
CA80	6	5,0	175	104	18200
CA80	7	5,0	30	24	7200
CA80	8	5,0	30	244	7320
CA80	9	5,0	48	106	5088
CA80	10	5,0	30	84	2520
CA80	11	10,0	28	348	9744
CA80	12	10,0	78	394	30732
CA80	13	10,0	8	324	1944
CA80	14	10,0	8	324	1944
CA80	15	12,5	104	402	42200
CA80	16	12,5	24	348	8352

**STUDIO-D ARQUITETURA**  
 RUA BELVALUNA CONJUNTO 7 - CAMPOS NOVOS S/C - FONES 3421/9114-9888 - EMAIL: LUIZ@STUDIO-D.COM.BR

**PROJETO ESTRUTURAL**

EMPRESA: Av. Catarina Bellicanta Neto esq. com a Rua Vergílio Antunes

RESERVADO DABRIBO E ASSINATURA

RESPONSÁVEL TÉCNICO PROJETO: ENG. CIVIL DIEISON RAUOS GLASBAPP CREA-SC 38.0294-3

RESPONSÁVEL TÉCNICO EXECUÇÃO:

DATA: 2011

ESCALA: 1/10

ÁREA TOTAL DA CONSTRUÇÃO: 730,01 m<sup>2</sup>

FRANQUIA: 01/02