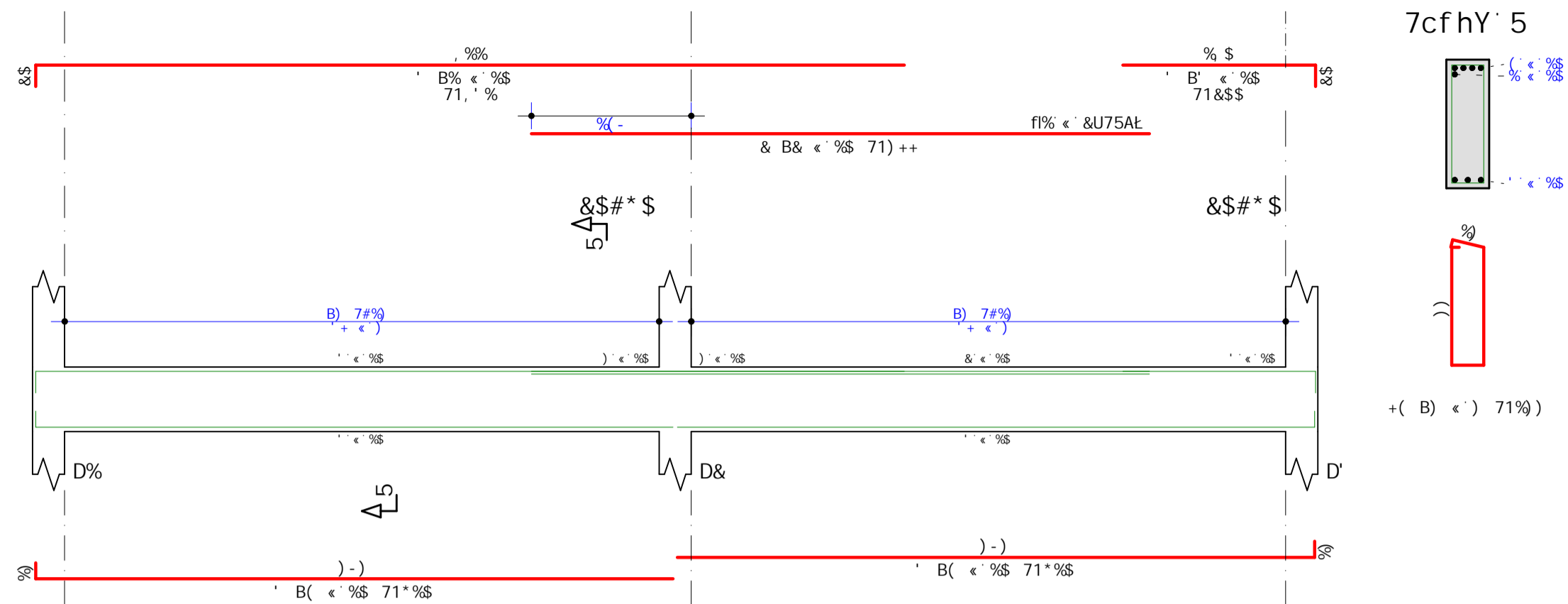
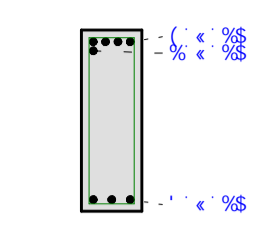


VB1

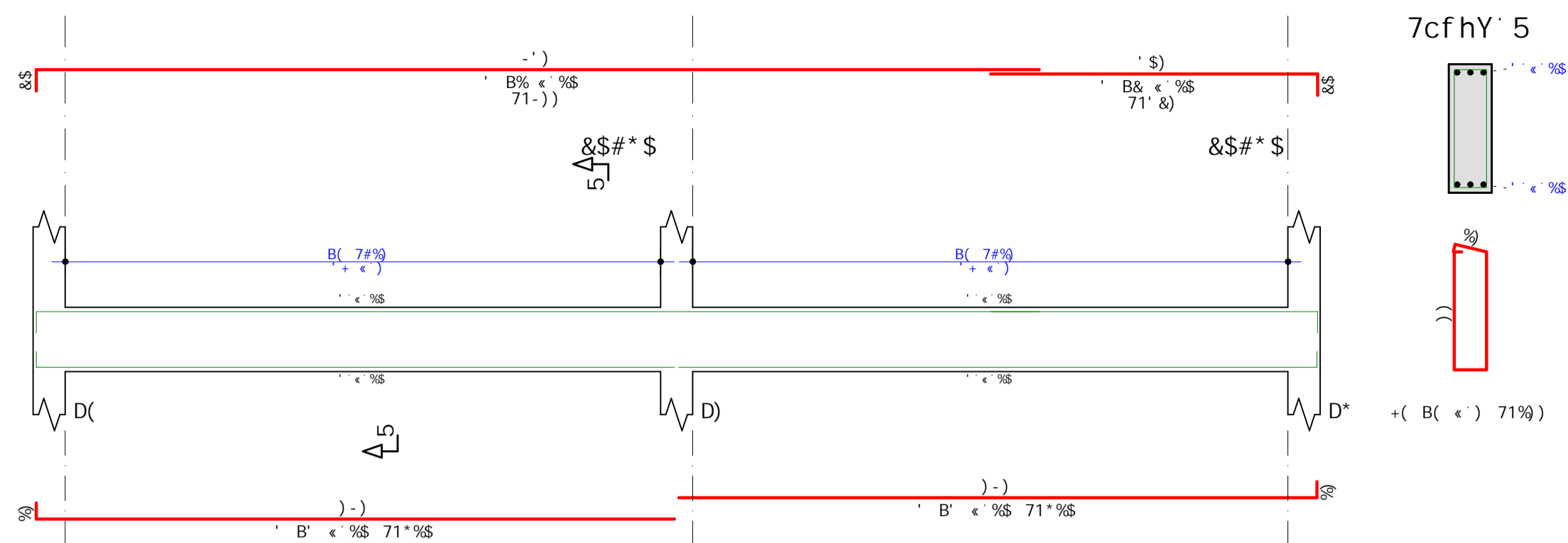


7cfhY' 5

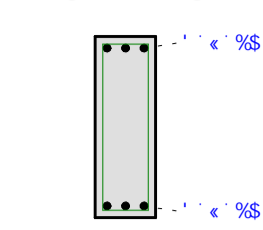


+(B(<' 71%))

VB2

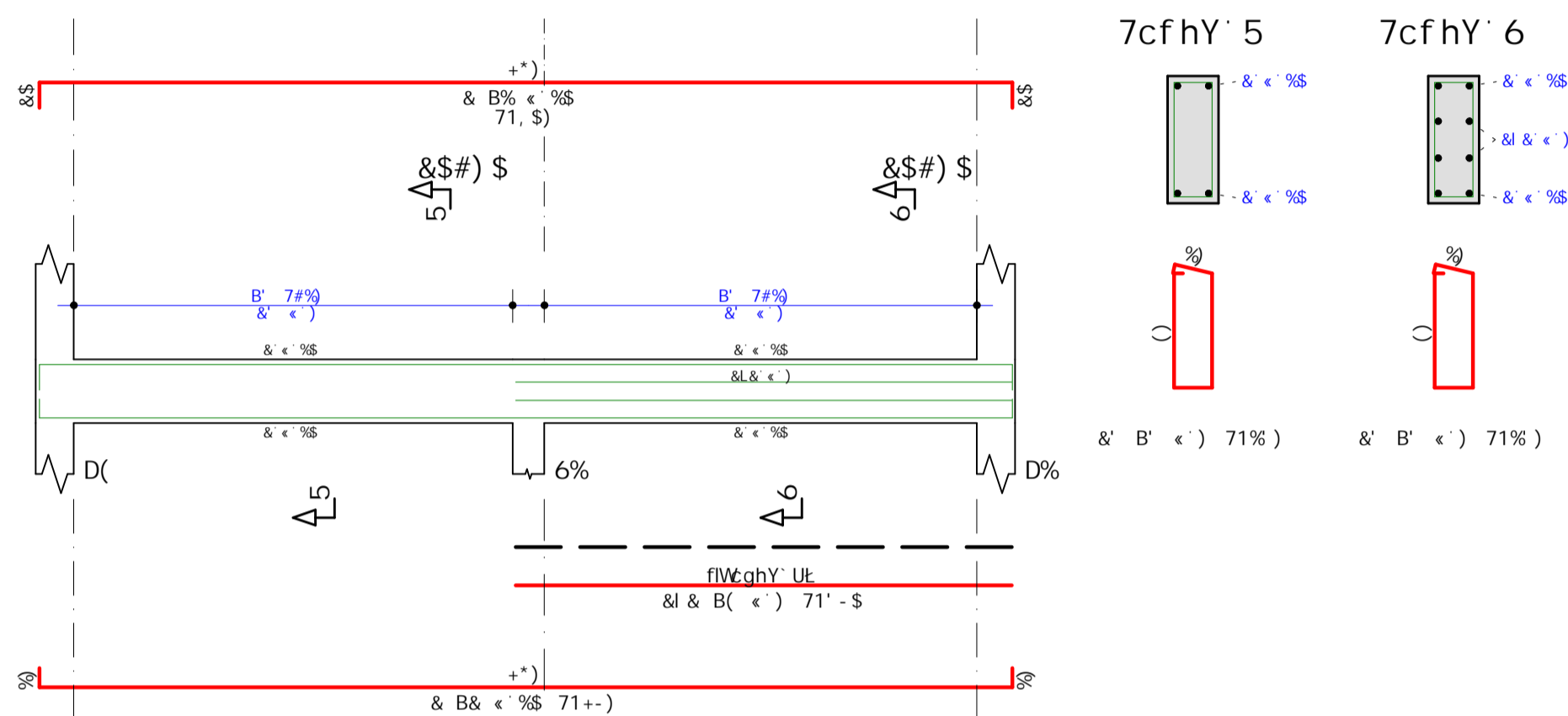


7cfhY' 5

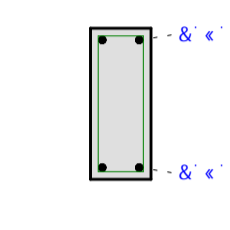


+(B(<' 71%))

VB3

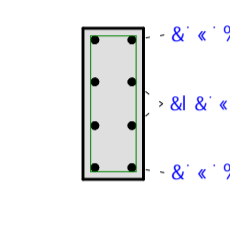


7cfhY' 5



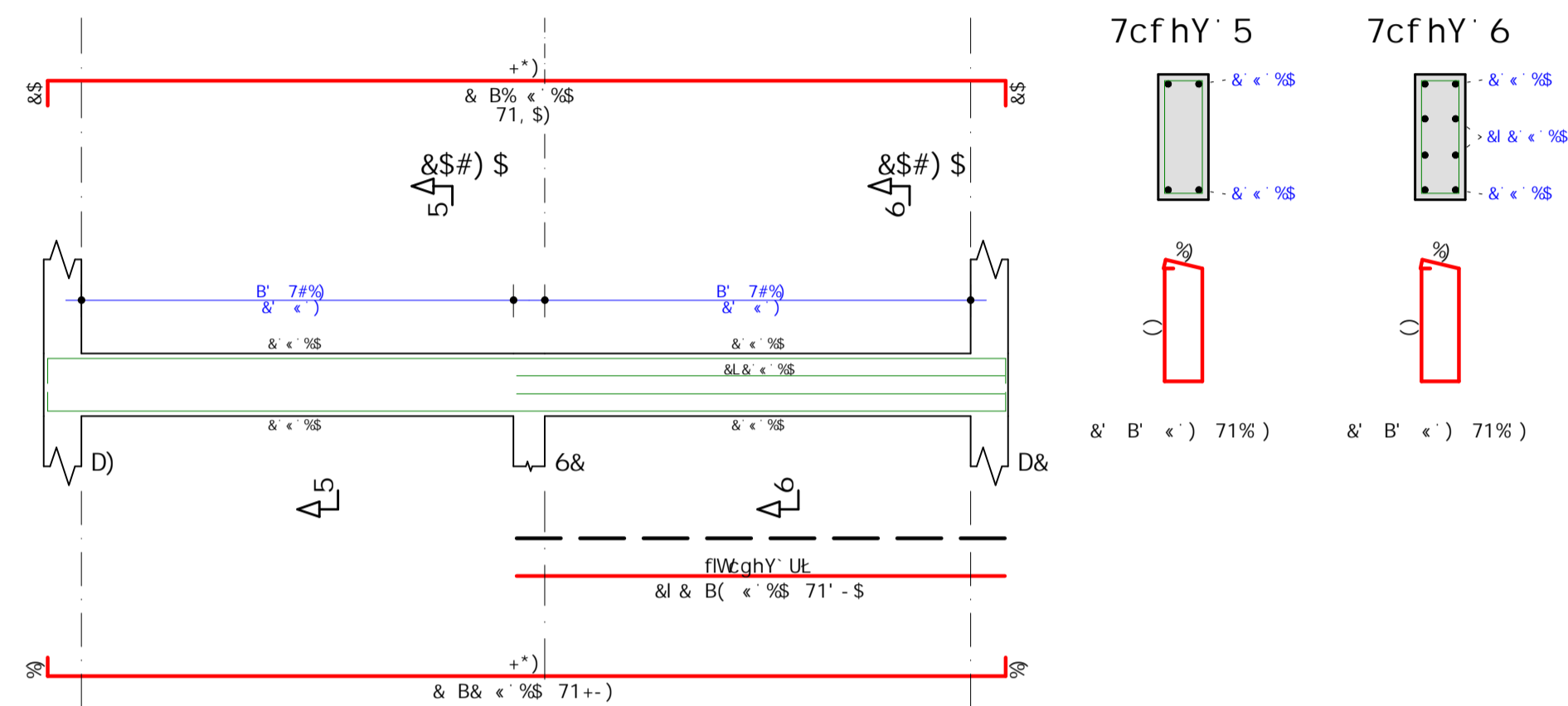
& B' <' 71%)

7cfhY' 6

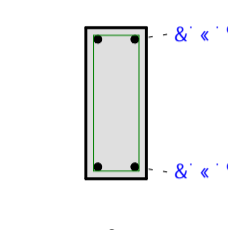


& B' <' 71%)

VB4

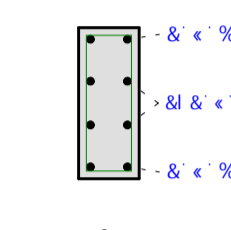


7cfhY' 5



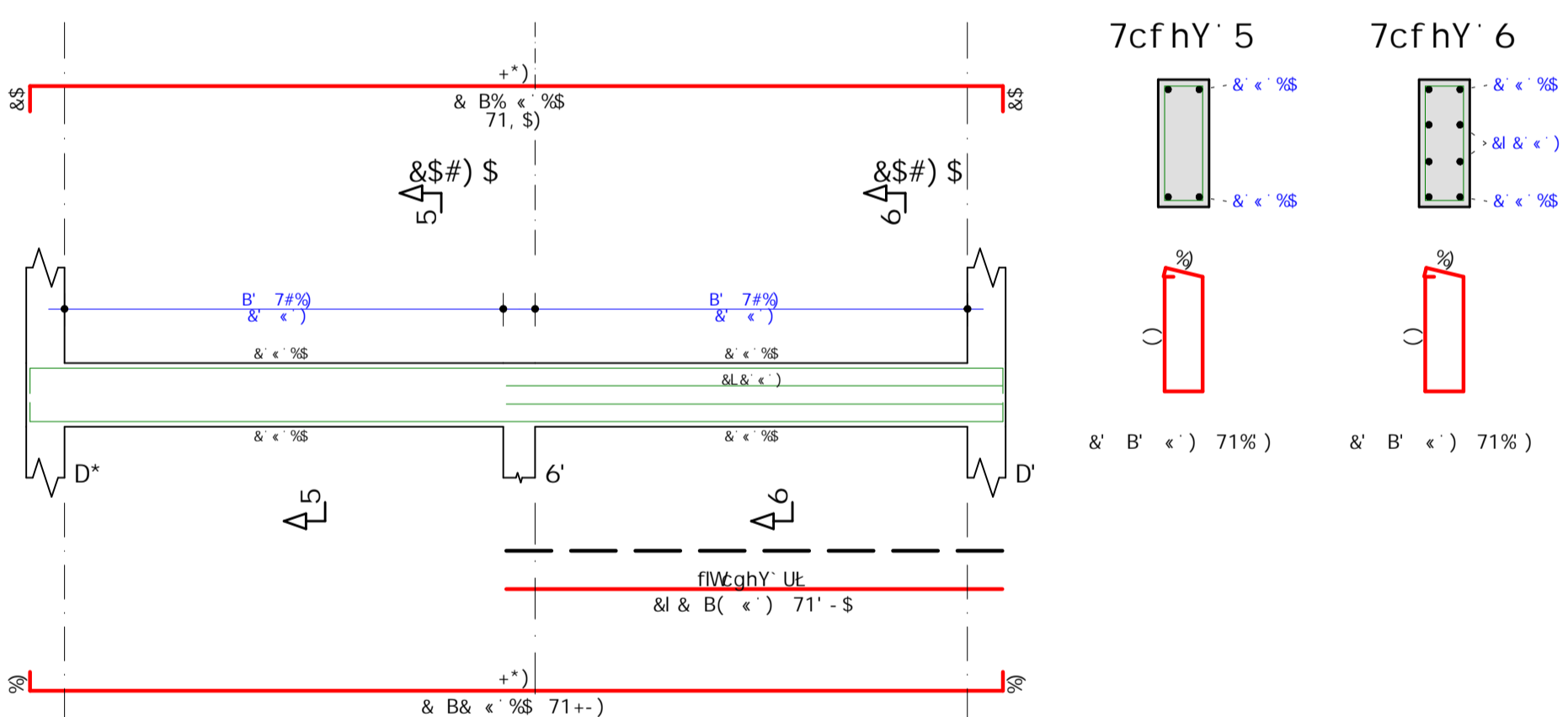
& B' <' 71%)

7cfhY' 6

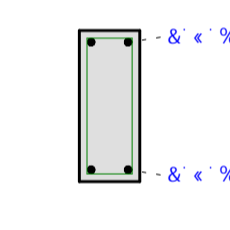


& B' <' 71%)

VB5

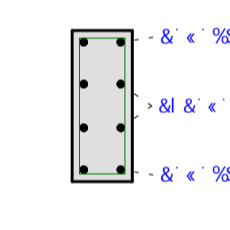


7cfhY' 5

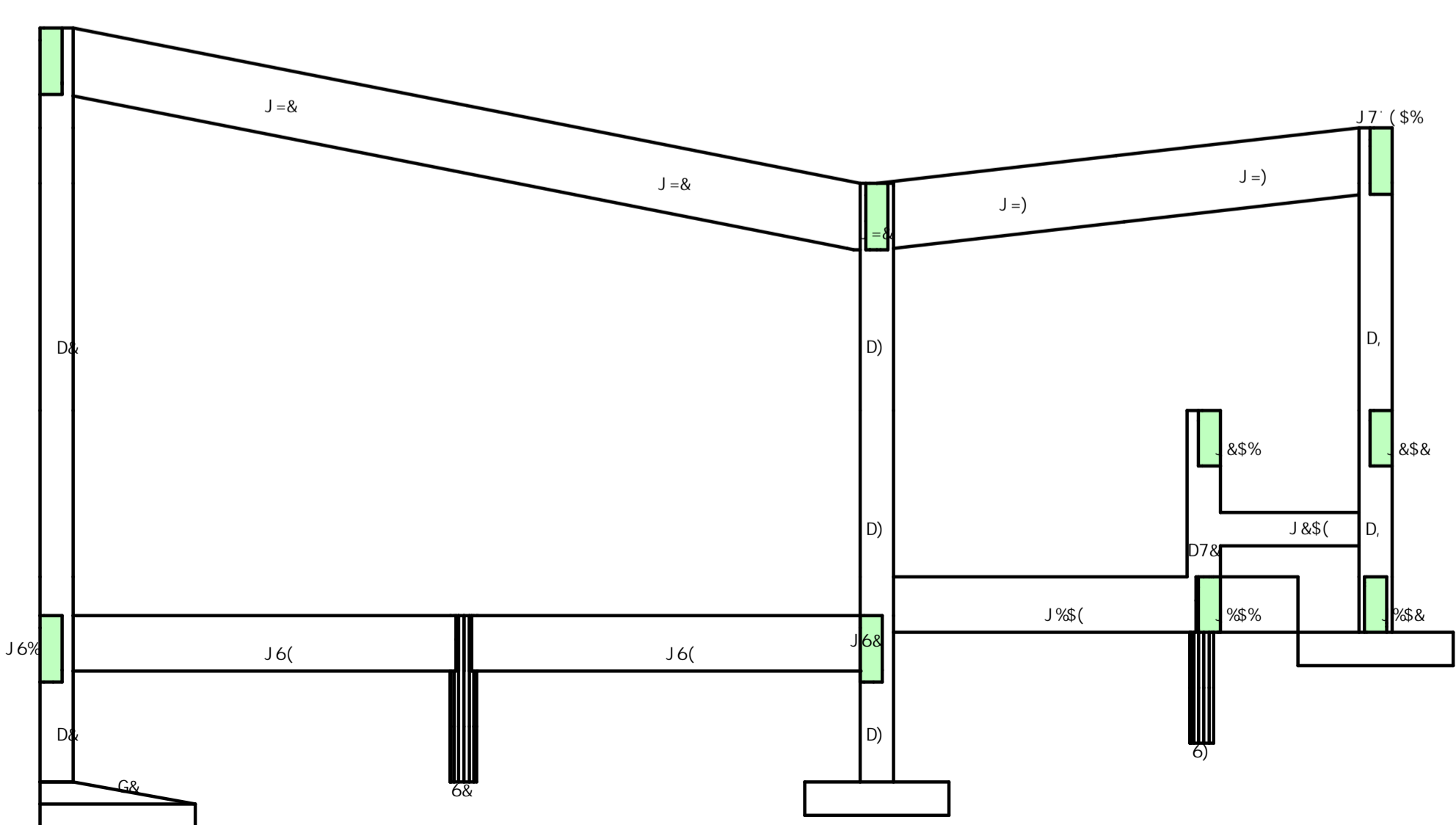
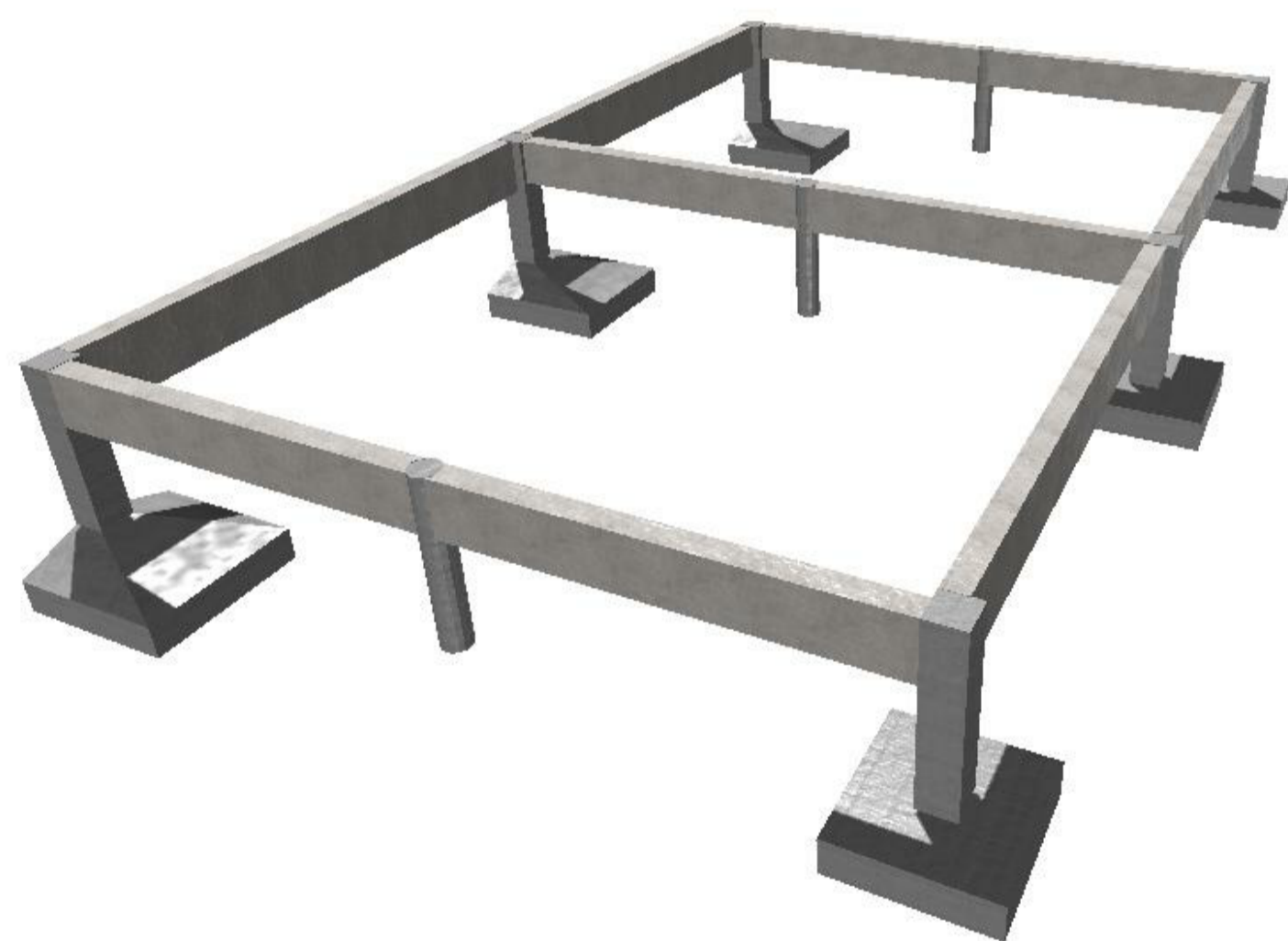


& B' <' 71%)

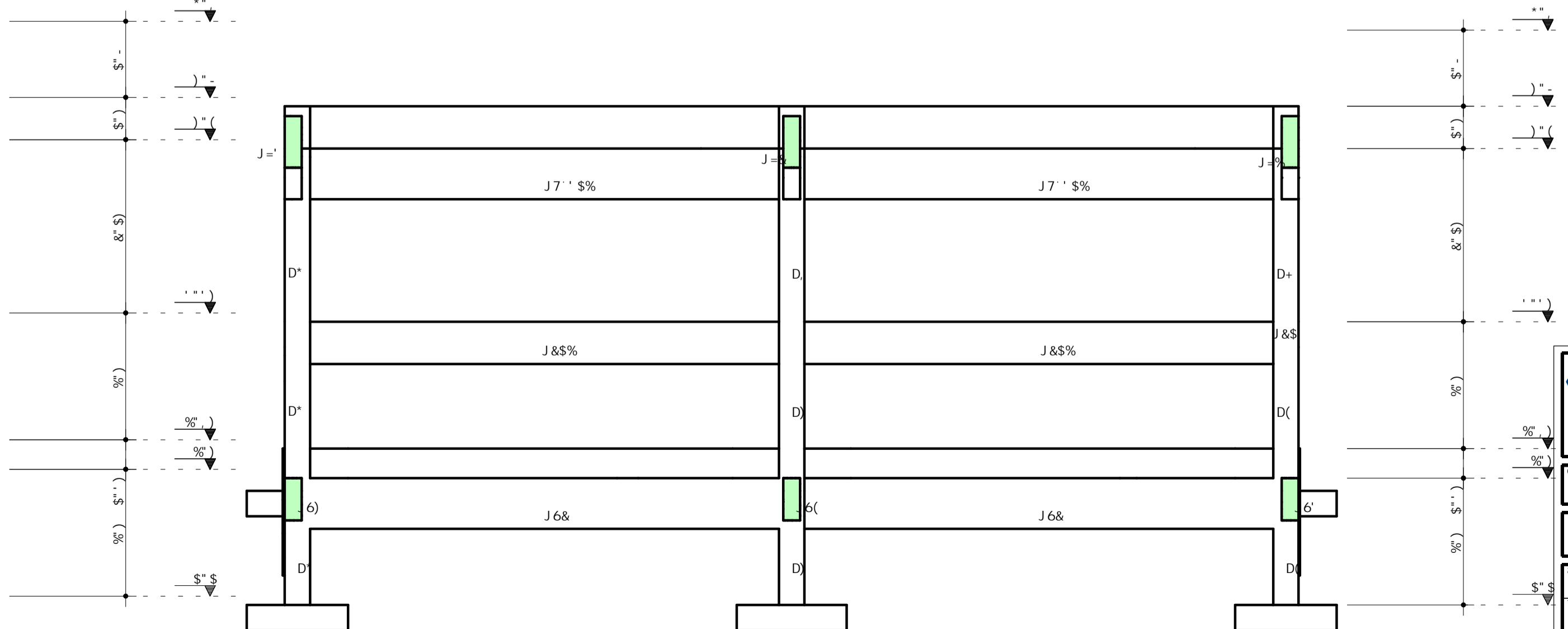
7cfhY' 6



& B' <' 71%)



7cfhY' 5! 5



7cfhY' 6! 6

5uC	DCG	6=H	EI 5BH	7CADF=A9BHC	I B=H	HCH5@
		aa		V6	V6	V6
J6%						
J6&						
J6'						
J6(
J6)						

5uC	F9I AC 89' 5uC	6=H	7CADF	D9GC
		aa	a	[Z
DYgc' HchU				Z
DYgc' HchU				Z

DF9: 9=HI F5' AI B=7=D5@ 89' 75ADCG' BCJCG' fig7L
DF 5 9 008-7-008-02 - K - 1 2084 C 1 - 089 04 - 1 04 - 055

G97F9H5F=5' AI B=7=D5@ 89' HF5BGDCFH9G2' C6F5G' 9' I F65B=GAC
89D5FH5A9BHC' 89' 9B: 9B<5F=5

5AD@=5uE' C' @5F' 8CG' A9B=BCG

9GHFI HI F5@

BCJ 9A6FC#&&&%

98A@=GCB >' F'