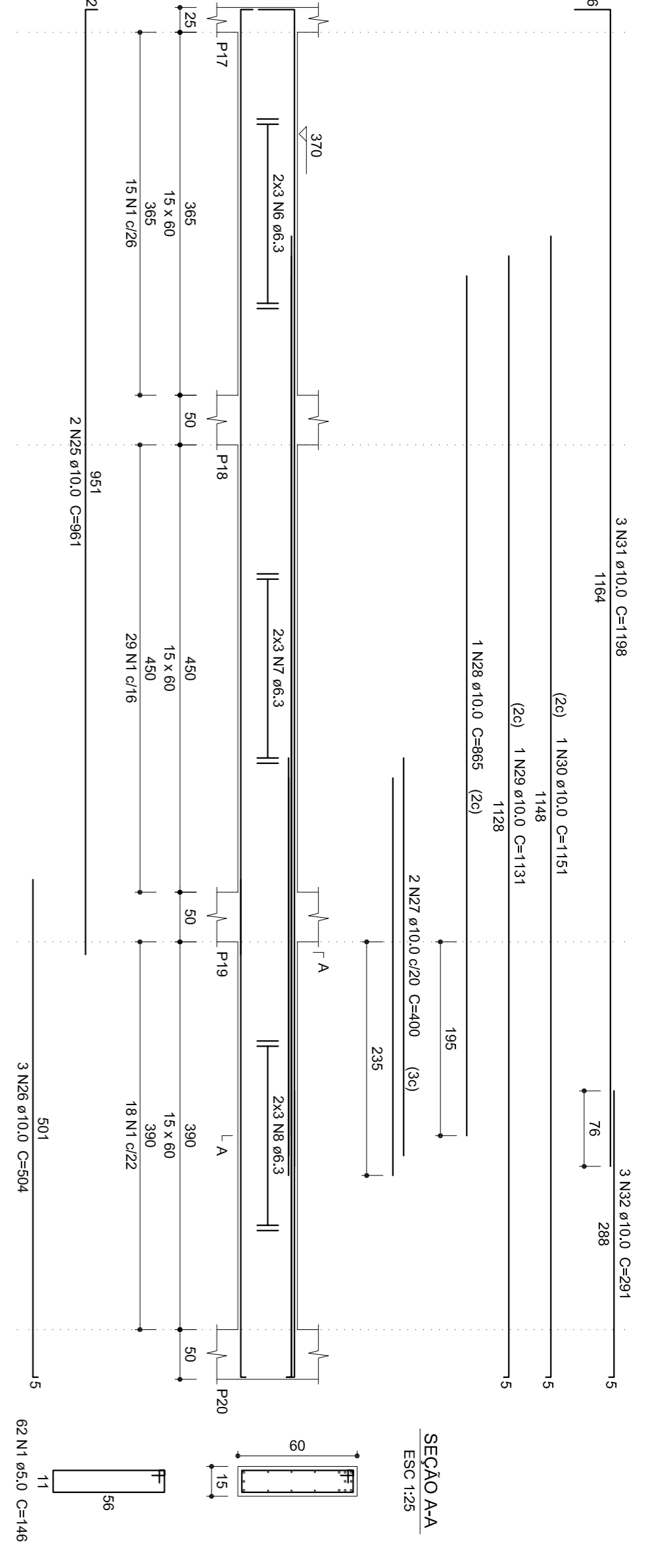
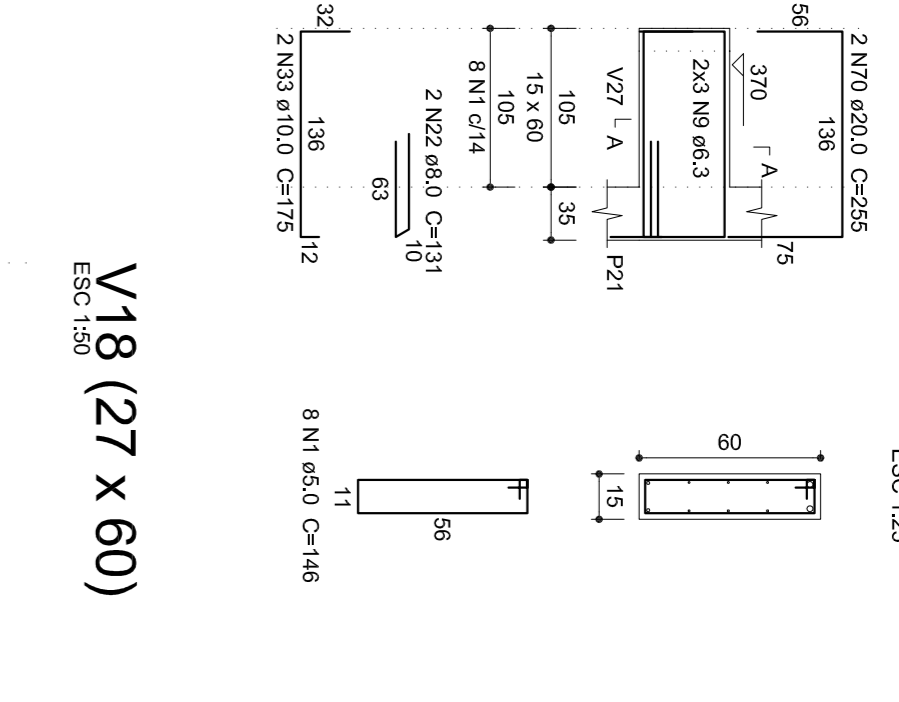


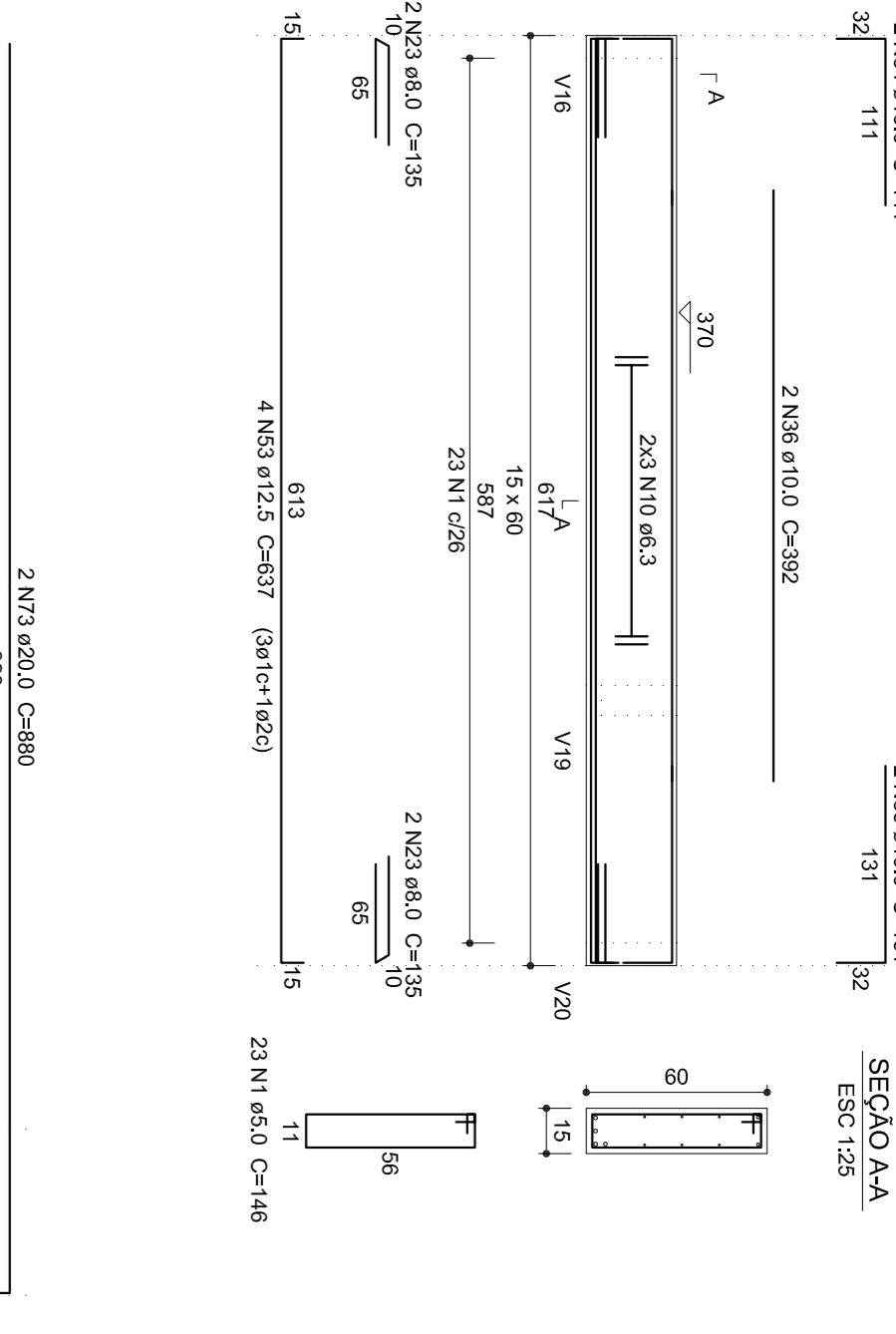
V12 (15 x 60)



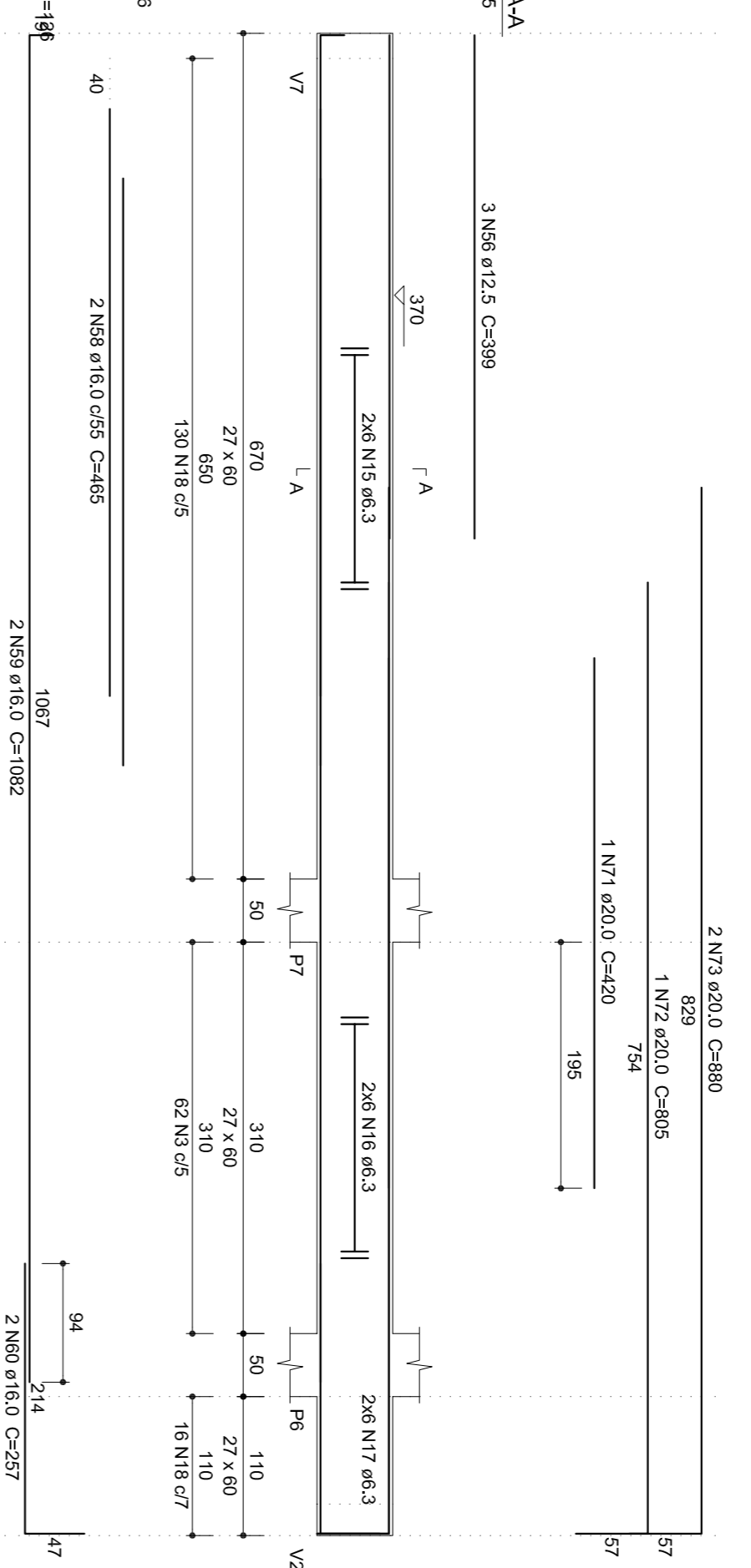
V13 (15 x 60)



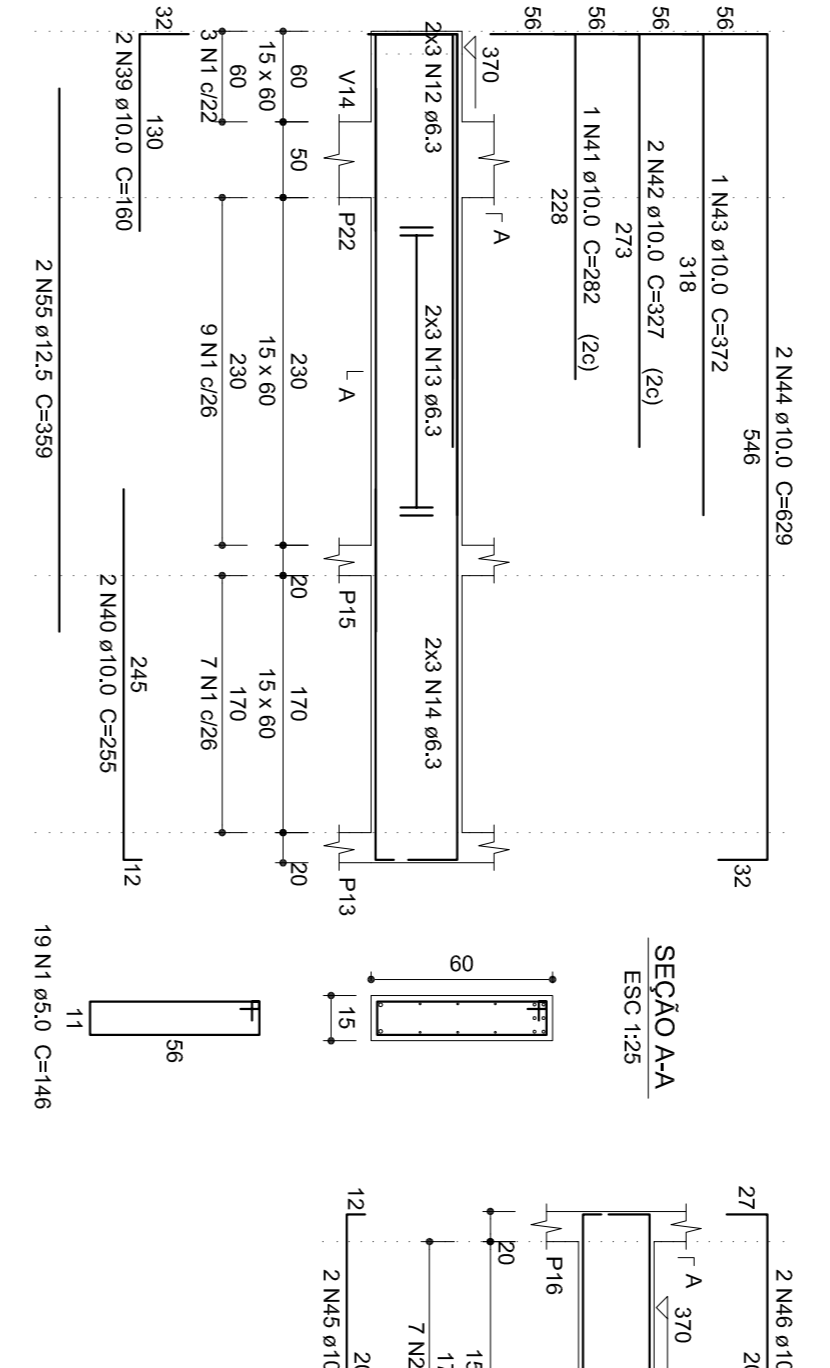
V14 (15 x 60)



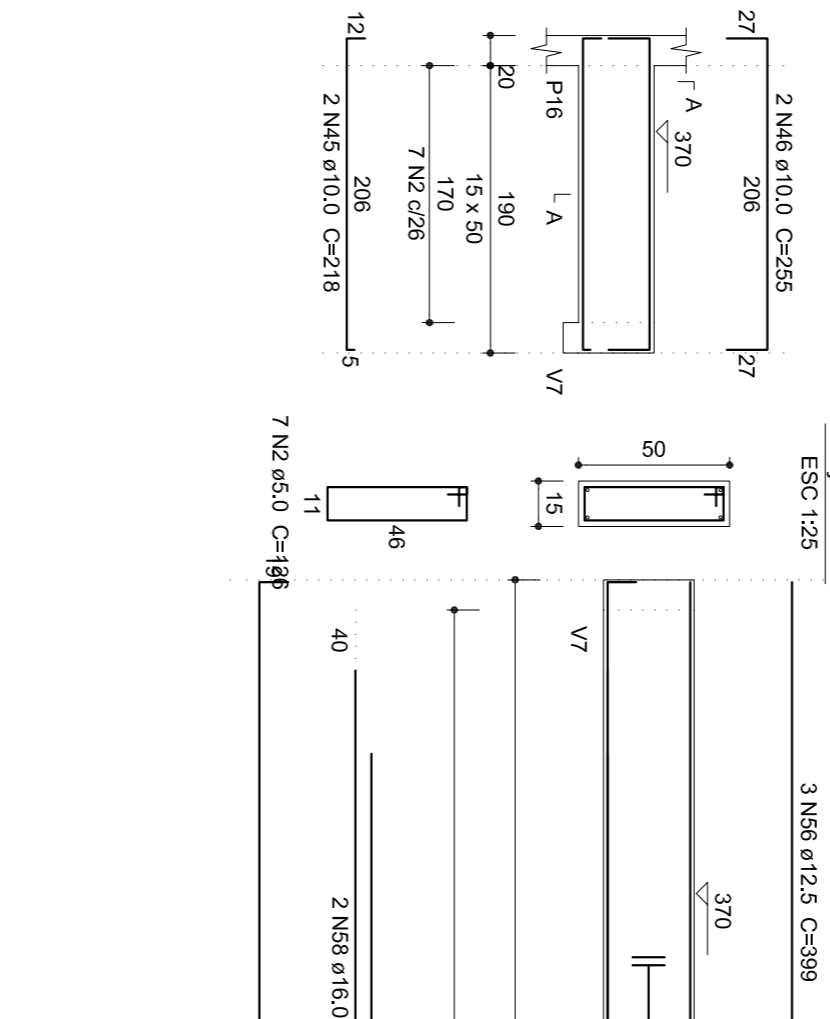
V18 (27 x 60)



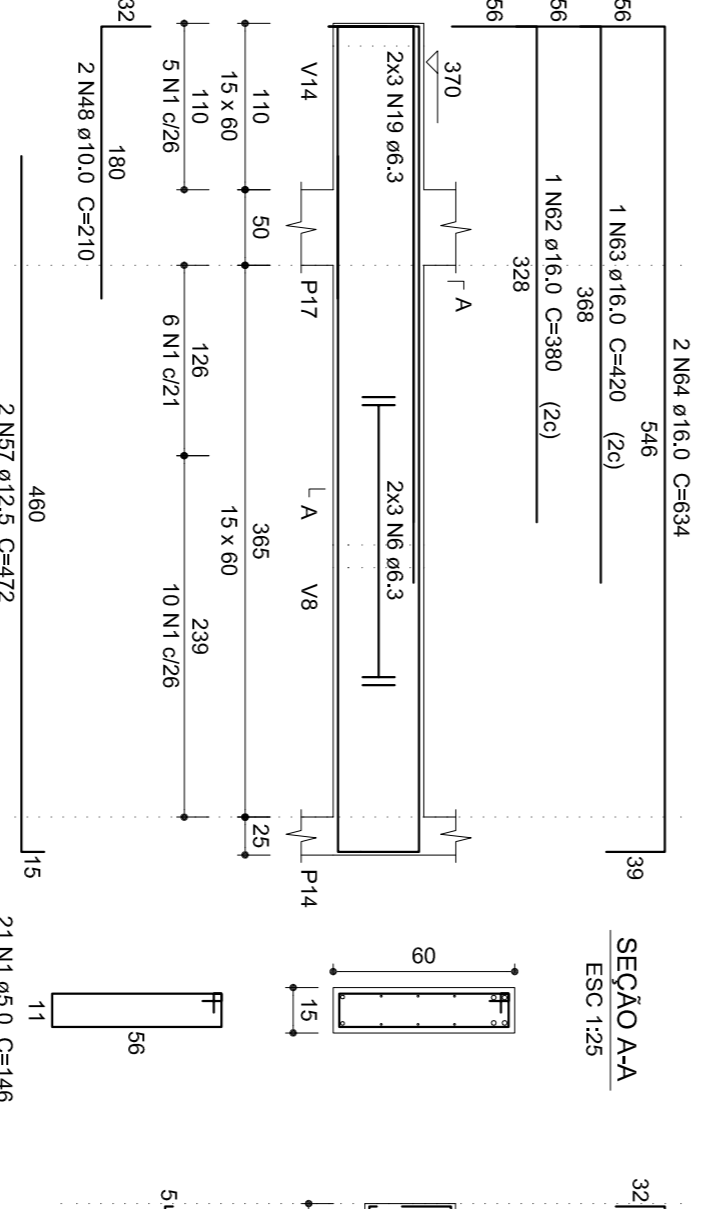
V16 (15 x 60)



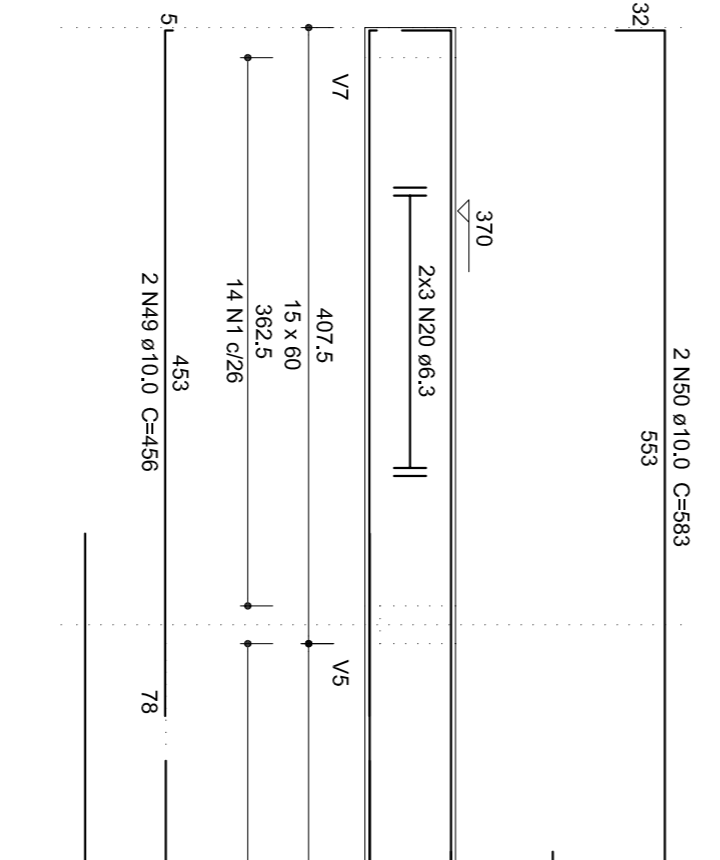
V17 (15 x 50)



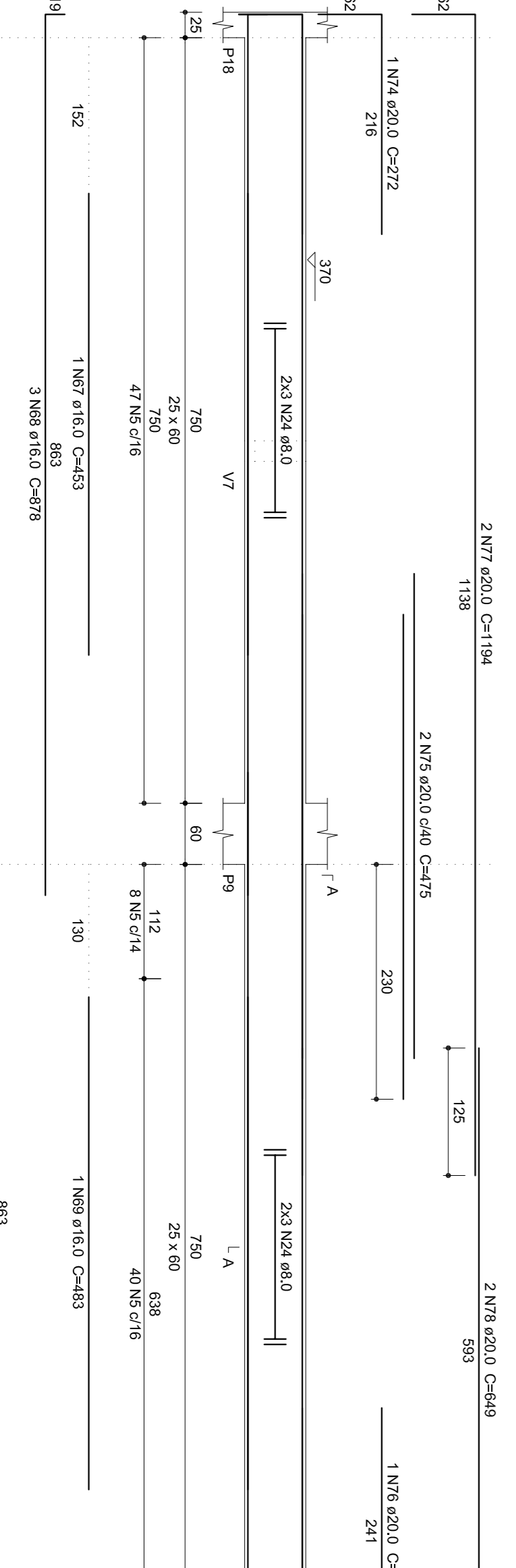
V20 (15 x 60)



V21 (15 x 60)



V22 (25 x 60)



Relação do aço

CA50	N	DIAM (mm)	QUANT	UNIT	C.TOTAL
CA60	1	5.0	153	Gr16	287.78
CA50	2	5.0	62	Gr16	107.88
CA50	3	5.0	174	Gr16	231.2
CA50	4	5.0	136	Gr16	157.70
CA50	5	5.0	96	Gr16	107.88
CA50	6	5.0	166	Gr16	323.2
CA50	7	5.0	122	Gr16	171.70
CA50	8	5.0	104	Gr16	146.70
CA50	9	5.0	116	Gr16	162.70
CA50	10	5.0	104	Gr16	146.70
CA50	11	5.0	116	Gr16	162.70
CA50	12	5.0	104	Gr16	146.70
CA50	13	5.0	116	Gr16	162.70
CA50	14	5.0	104	Gr16	146.70
CA50	15	5.0	116	Gr16	162.70
CA50	16	5.0	104	Gr16	146.70
CA50	17	5.0	116	Gr16	162.70
CA50	18	5.0	104	Gr16	146.70
CA50	19	5.0	116	Gr16	162.70
CA50	20	5.0	104	Gr16	146.70
CA50	21	5.0	116	Gr16	162.70
CA50	22	5.0	104	Gr16	146.70
CA50	23	5.0	116	Gr16	162.70
CA50	24	5.0	104	Gr16	146.70
CA50	25	5.0	116	Gr16	162.70
CA50	26	5.0	104	Gr16	146.70
CA50	27	5.0	116	Gr16	162.70
CA50	28	5.0	104	Gr16	146.70
CA50	29	5.0	116	Gr16	162.70
CA50	30	5.0	104	Gr16	146.70
CA50	31	5.0	116	Gr16	162.70
CA50	32	5.0	104	Gr16	146.70
CA50	33	5.0	116	Gr16	162.70
CA50	34	5.0	104	Gr16	146.70
CA50	35	5.0	116	Gr16	162.70
CA50	36	5.0	104	Gr16	146.70
CA50	37	5.0	116	Gr16	162.70
CA50	38	5.0	104	Gr16	146.70
CA50	39	5.0	116	Gr16	162.70
CA50	40	5.0	104	Gr16	146.70
CA50	41	5.0	116	Gr16	162.70
CA50	42	5.0	104	Gr16	146.70
CA50	43	5.0	116	Gr16	162.70
CA50	44	5.0	104	Gr16	146.70
CA50	45	5.0	116	Gr16	162.70
CA50	46	5.0	104	Gr16	146.70
CA50	47	5.0	116	Gr16	162.70
CA50	48	5.0	104	Gr16	146.70
CA50	49	5.0	116	Gr16	162.70
CA50	50	5.0	104	Gr16	146.70
CA50	51	5.0	116	Gr16	162.70
CA50	52	5.0	104	Gr16	146.70
CA50	53	5.0	116	Gr16	162.70
CA50	54	5.0	104	Gr16	146.70
CA50	55	5.0	116	Gr16	162.70
CA50	56	5.0	104	Gr16	146.70
CA50	57	5.0	116	Gr16	162.70
CA50</					